



Rabbit Anti-GLTSCR2 antibody

SL13382R

Product Name:	GLTSCR2
Chinese Name:	胶质瘤抑癌候选基因2抗体
Alias:	Glioma tumor suppressor candidate region gene 2 protein; GLTSCR2; GSCR2_HUMAN; p60; PICT1; protein interacting with carboxyl terminus 1.
Organism Species:	Rabbit
Clonality:	Polyclonal
React Species:	Human,Mouse,Rat,Dog,Pig,Cow,Horse,Sheep,
Applications:	WB=1:500-2000ELISA=1:500-1000IHC-P=1:400-800IHC-F=1:400-800ICC=1:100-500IF=1:100-500 (Paraffin sections need antigen repair) not yet tested in other applications. optimal dilutions/concentrations should be determined by the end user.
Molecular weight:	54kDa
Cellular localization:	The nucleus
Form:	Lyophilized or Liquid
Concentration:	1mg/ml
immunogen:	KLH conjugated synthetic peptide derived from human GLTSCR2/PICT1:401-478/478
Lsotype:	IgG
Purification:	affinity purified by Protein A
Storage Buffer:	0.01M TBS(pH7.4) with 1% BSA, 0.03% Proclin300 and 50% Glycerol.
Storage:	Store at -20 °C for one year. Avoid repeated freeze/thaw cycles. The lyophilized antibody is stable at room temperature for at least one month and for greater than a year when kept at -20°C. When reconstituted in sterile pH 7.4 0.01M PBS or diluent of antibody the antibody is stable for at least two weeks at 2-4 °C.
PubMed:	PubMed
Product Detail:	The tumor suppressor PTEN plays an essential role in regulating signaling pathways involved in cell growth and apoptosis and is inactivated in a wide variety of tumors. Protein interacting with PTEN carboxyl terminus 1 (PICT-1), also designated p60 or Glioma tumor suppressor candidate region gene 2 protein, binds to the C-terminus of PTEN and regulates its turnover. Five Ser/Thr residues within the C-terminal segment of PTEN, including Ser-380, are phosphorylated upon binding of PTEN to PICT-1 and

may contribute to the stabilization of PTEN. PICT-1 is localized to the nucleus and/or nucleolus and is highly expressed in pancreas and heart, but can also be detected in liver, skeletal muscle, placenta and kidney. PICT-1 also interacts with herpes simplex virus 1 regulatory proteins ICP22 and ICP0. The tumor suppressor GLTSCR2 gene, which encodes PICT-1, is located in a 150-kb minimal common deletion region for human gliomas, especially oligodendrogliomas, and maps to human chromosome 19q13.3.

Subunit:

Interacts with HSV-1 early proteins ICP22 and ICP0.

Subcellular Location:

Nucleus; nucleolus.

Tissue Specificity:

Expressed at high levels in heart and pancreas, moderate levels in placenta, liver, skeletal muscle, and kidney, and low levels in brain and lung.

Similarity:

Belongs to the GLTSCR2 family.

SWISS:

Q9NZM5

Gene ID:

29997

Database links:

[Entrez Gene: 29997](#)Human

[Omim: 605691](#)Human

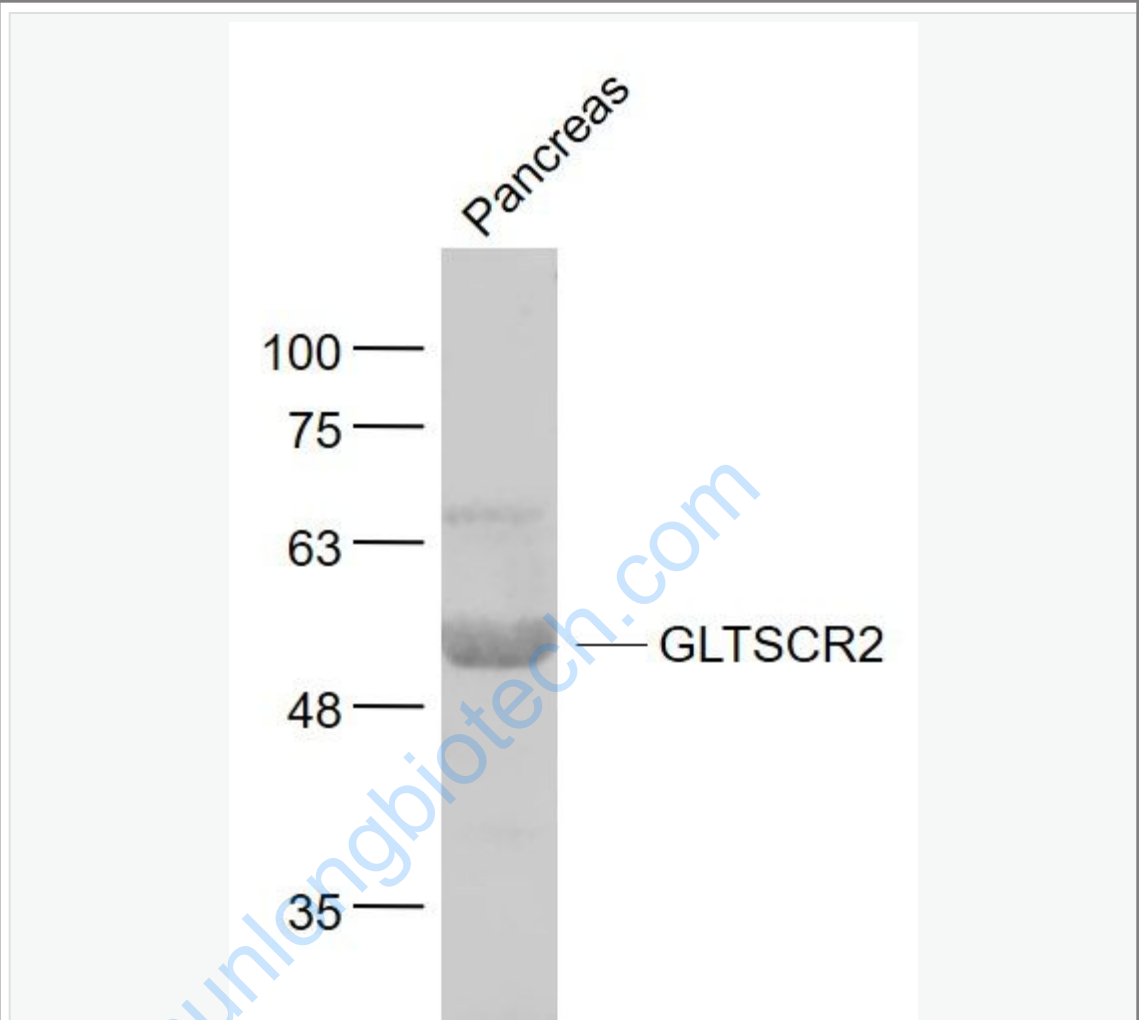
[SwissProt: Q9NZM5](#)Human

[Unigene: 421907](#)Human

Important Note:

This product as supplied is intended for research use only, not for use in human, therapeutic or diagnostic applications.

Picture:



Sample:

Pancreas (Mouse) Lysate at 40 ug

Primary: Anti- GLTSCR2 (SL13382R) at 1/1000 dilution

Secondary: IRDye800CW Goat Anti-Rabbit IgG at 1/20000 dilution

Predicted band size: 54 kD

Observed band size: 54 kD