



Rabbit Anti-CK18 antibody

SL1339R

Product Name:	CK18
Chinese Name:	细胞角蛋白18抗体(C端)
Alias:	Cell proliferation inducing gene 46 protein; Cell proliferation inducing protein 46; CK 18; CK18; CYK18; Cytokeratin 18; Cytokeratin endo B; Cytokeratin18; Keratin 18; Keratin D; Keratin type I cytoskeletal 18; Kerd; KRT18.
Organism Species:	Rabbit
Clonality:	Polyclonal
React Species:	Human,Mouse,Rat,Chicken,Dog,Rabbit,
Applications:	WB=1:500-2000ELISA=1:500-1000IHC-P=1:400-800IHC-F=1:400-800Flow-Cyt=0.2µg /testIF=1:100-500 (Paraffin sections need antigen repair) not yet tested in other applications. optimal dilutions/concentrations should be determined by the end user.
Molecular weight:	48kDa
Cellular localization:	The nucleuscytoplasmic
Form:	Lyophilized or Liquid
Concentration:	1mg/ml
immunogen:	KLH conjugated synthetic peptide derived from human CK18:301-423/430
Lsotype:	IgG
Purification:	affinity purified by Protein A
Storage Buffer:	0.01M TBS(pH7.4) with 1% BSA, 0.03% Proclin300 and 50% Glycerol.
Storage:	Store at -20 °C for one year. Avoid repeated freeze/thaw cycles. The lyophilized antibody is stable at room temperature for at least one month and for greater than a year when kept at -20°C. When reconstituted in sterile pH 7.4 0.01M PBS or diluent of antibody the antibody is stable for at least two weeks at 2-4 °C.
PubMed:	PubMed
Product Detail:	KRT18 encodes the type I intermediate filament chain keratin 18. Keratin 18, together with its filament partner keratin 8, are perhaps the most commonly found members of the intermediate filament gene family. They are expressed in single layer epithelial tissues of the body. Mutations in this gene have been linked to cryptogenic cirrhosis. Two transcript variants encoding the same protein have been found for this gene.

[provided by RefSeq].

Function:

When phosphorylated, plays a role in filament reorganization. Involved in the delivery of mutated CFTR to the plasma membrane. Involved in the uptake of thrombin-antithrombin complexes by hepatic cells (By similarity). Together with KRT8, is involved in interleukin-6 (IL-6)-mediated barrier protection.

Post-translational modifications:

Phosphorylation increases by IL-6.

Proteolytically cleaved by caspases during epithelial cell apoptosis. Cleavage occurs at Asp-231 by either caspase-3, caspas-6 or caspase-7.

O-glycosylated at multiple sites; glycans consist of single N-acetylglucosamine residue.

Similarity:

Belongs to the intermediate filament family.

SWISS:

P05783

Gene ID:

3875

Database links:

[Entrez Gene: 506480](#)Cow

[Entrez Gene: 3875](#)Human

[Entrez Gene: 16668](#)Mouse

[Entrez Gene: 294853](#)Rat

[Omim: 148070](#)Human

[SwissProt: P05783](#)Human

[SwissProt: P05784](#)Mouse

[SwissProt: Q5BJY9](#)Rat

[Unigene: 406013](#)Human

[Unigene: 22479](#)Mouse

[Unigene: 103924](#)Rat

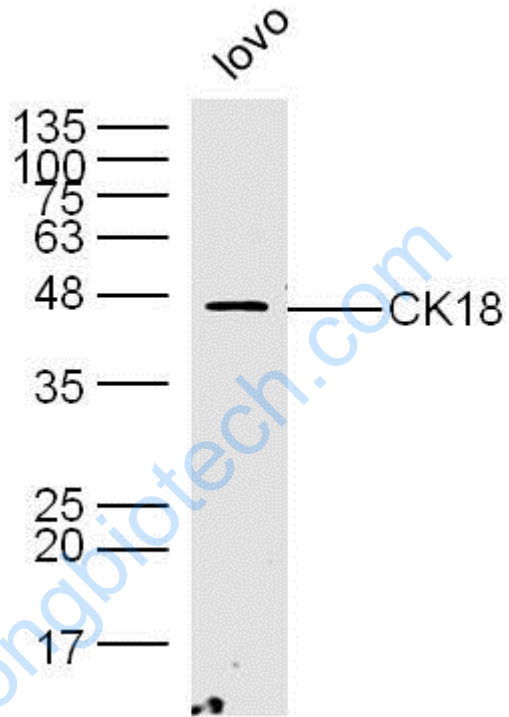
Important Note:

This product as supplied is intended for research use only, not for use in human, therapeutic or diagnostic applications.

结构蛋白 (Structural Proteins)

常用于Tumour细胞的分化、增殖及转移方面的研究。

Picture:



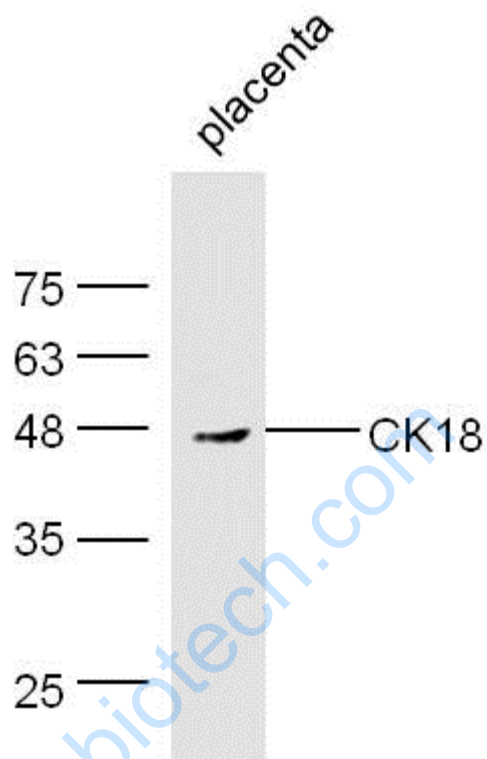
Sample: Lovo (mouse) Lysate at 40 ug

Primary: Anti- CK18(SL1339R)at 1/300 dilution

Secondary: IRDye800CW Goat Anti-Rabbit IgG at 1/20000 dilution

Predicted band size:48kD

Observed band size: 47kD



Sample:

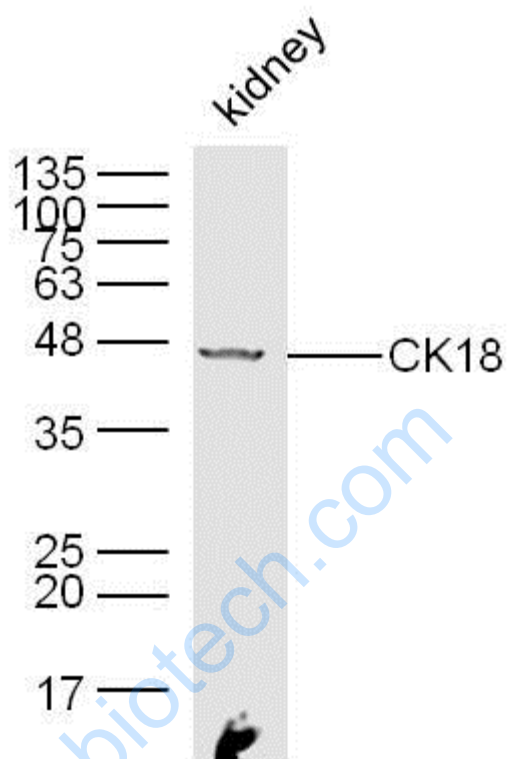
placenta (Mouse) Lysate at 40 ug

Primary: Anti-CK18 (Bs-1339R) at 1/300 dilution

Secondary: IRDye800CW Goat Anti-Rabbit IgG at 1/20000 dilution

Predicted band size: 48 kD

Observed band size: 48 kD



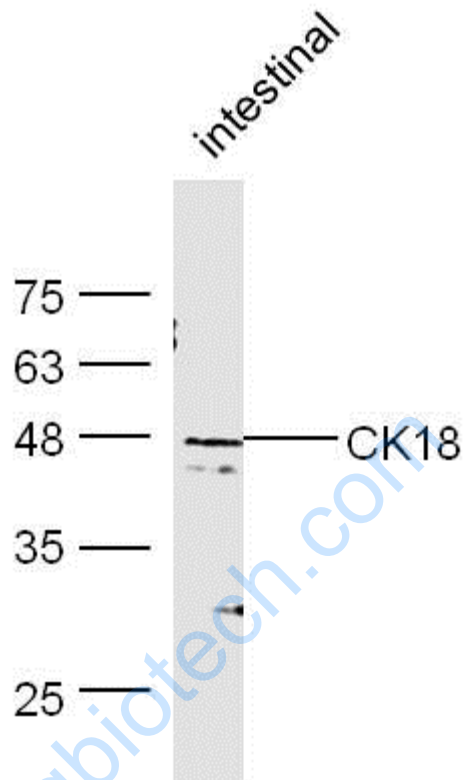
Sample: Kidney (mouse) Lysate at 40 ug

Primary: Anti- CK18(SL1339R)at 1/300 dilution

Secondary: IRDye800CW Goat Anti-Rabbit IgG at 1/20000 dilution

Predicted band size:48kD

Observed band size: 47kD



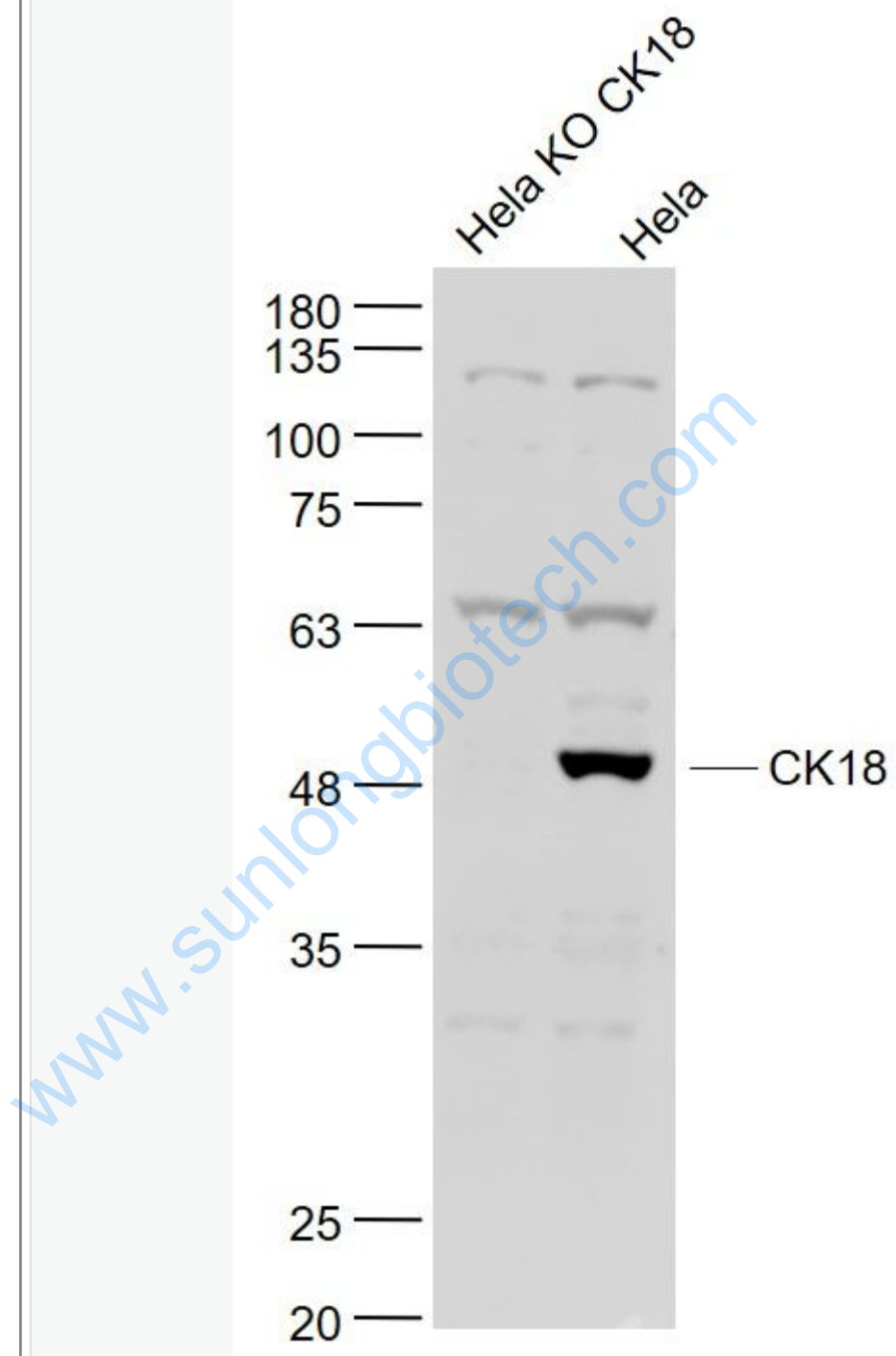
Sample: Intestinal (Mouse) Lysate at 30 ug

Primary: Anti- CK18 (SL1339R) at 1/300 dilution

Secondary: IRDye800CW Goat Anti-Mouse IgG at 1/10000 dilution

Predicted band size: 48 kD

Observed band size: 48 kD



Sample:

HeLa KO CK18 (Human) Cell Lysate at 30 ug

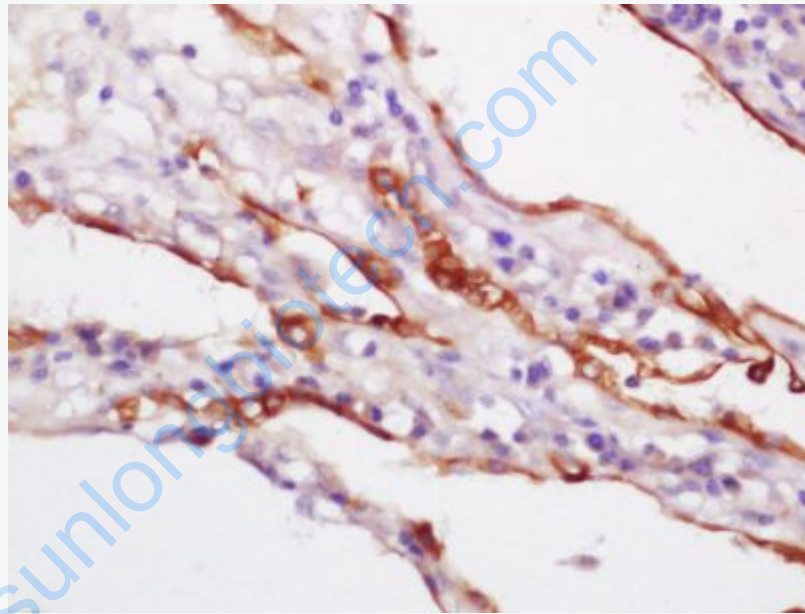
Hela(Human) Cell Lysate at 30 ug

Primary: Anti-CK18 (SL1339R) at 1/1000 dilution

Secondary: IRDye800CW Goat Anti-Rabbit IgG at 1/20000 dilution

Predicted band size: 48 kD

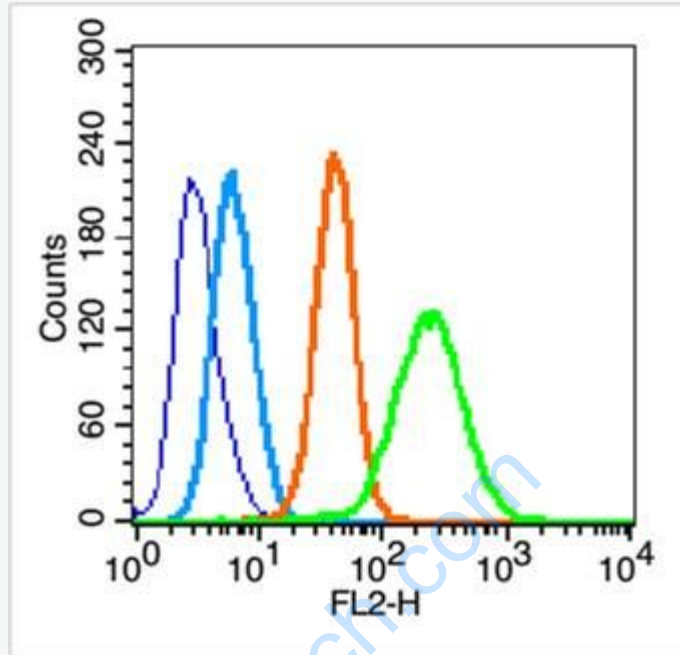
Observed band size: 48 kD



Tissue/cell: human lung carcinoma; 4% Paraformaldehyde-fixed and paraffin-embedded;

Antigen retrieval: citrate buffer (0.01M, pH 6.0), Boiling bathing for 15min; Block endogenous peroxidase by 3% Hydrogen peroxide for 30min; Blocking buffer (normal goat serum,C-0005) at 37°C for 20 min;

Incubation: Anti-CK18 Polyclonal Antibody, Unconjugated(SL1339R) 1:200, overnight at 4°C, followed by conjugation to the secondary antibody(SP-0023) and DAB(C-0010) staining



Blank control (blue line): Hep G2 (blue).

Primary Antibody (green line): Rabbit Anti-CK18 antibody (SL1339R)

Dilution: 0.2 μ g /10⁶ cells;

Isotype Control Antibody (orange line): Rabbit IgG .

Secondary Antibody (white blue line): Goat anti-rabbit IgG-PE

Dilution: 1 μ g /test.

Protocol

The cells were fixed with 70% ethanol (Overnight at 4°C) and then permeabilized with 90% methanol for 20 min at -20°C. Cells stained with Primary Antibody for 30 min at room temperature. The cells were then incubated in 1 X PBS/2%BSA/10% goat serum to block non-specific protein-protein interactions followed by the antibody for 15 min at room temperature. The secondary antibody used for 40 min at room temperature. Acquisition of 20,000 events was performed.

