



## Rabbit Anti-GNG11 antibody

SL13467R

<b>Product Name:</b>	GNG11
<b>Chinese Name:</b>	G蛋白 $\gamma$ 11/G $\gamma$ 11 抗体
<b>Alias:</b>	G protein gamma 11 subunit; GBG11_HUMAN; Gng11; GNGT11; Guanine nucleotide binding protein G; Guanine nucleotide binding protein gamma 11; Guanine nucleotide-binding protein G(I)/G(S)/G(O) subunit gamma-11; IG; Osubunit gamma 11 precursor; SG.
<b>Organism Species:</b>	Rabbit
<b>Clonality:</b>	Polyclonal
<b>React Species:</b>	Human,Mouse,Rat,Dog,Pig,Cow,Sheep,
<b>Applications:</b>	ELISA=1:500-1000IHC-P=1:400-800IHC-F=1:400-800ICC=1:100-500IF=1:100-500 (Paraffin sections need antigen repair) not yet tested in other applications. optimal dilutions/concentrations should be determined by the end user.
<b>Molecular weight:</b>	8kDa
<b>Cellular localization:</b>	The cell membrane
<b>Form:</b>	Lyophilized or Liquid
<b>Concentration:</b>	1mg/ml
<b>immunogen:</b>	KLH conjugated synthetic peptide derived from human GNG11:31-70/73
<b>Lsotype:</b>	IgG
<b>Purification:</b>	affinity purified by Protein A
<b>Storage Buffer:</b>	0.01M TBS(pH7.4) with 1% BSA, 0.03% Proclin300 and 50% Glycerol.
<b>Storage:</b>	Store at -20 °C for one year. Avoid repeated freeze/thaw cycles. The lyophilized antibody is stable at room temperature for at least one month and for greater than a year when kept at -20°C. When reconstituted in sterile pH 7.4 0.01M PBS or diluent of antibody the antibody is stable for at least two weeks at 2-4 °C.
<b>PubMed:</b>	<a href="#">PubMed</a>
<b>Product Detail:</b>	Guanine nucleotide-binding proteins (G proteins) are involved as a modulator or transducer in various transmembrane signaling systems. The beta and gamma chains are required for the GTPase activity, for replacement of GDP by GTP, and for G protein-effector interaction.

**Function:**

Guanine nucleotide-binding proteins (G proteins) are involved as a modulator or transducer in various transmembrane signaling systems. The beta and gamma chains are required for the GTPase activity, for replacement of GDP by GTP, and for G protein-effector interaction.

**Subunit:**

G proteins are composed of 3 units, alpha, beta and gamma. Interacts with beta-1 and beta-3, but not with beta-2.

**Subcellular Location:**

Cell membrane.

**Tissue Specificity:**

Abundantly expressed in all tissues tested except for brain.

**Similarity:**

Belongs to the G protein gamma family.

**SWISS:**

P61952

**Gene ID:**

2791

**Database links:**

[Entrez Gene: 2791](#)Human

[Entrez Gene: 66066](#)Mouse

[Entrez Gene: 100912034](#)Rat

[Entrez Gene: 64199](#)Rat

[Omim: 604390](#)Human

[SwissProt: P61952](#)Human

[SwissProt: P61953](#)Mouse

[SwissProt: P61954](#)Rat

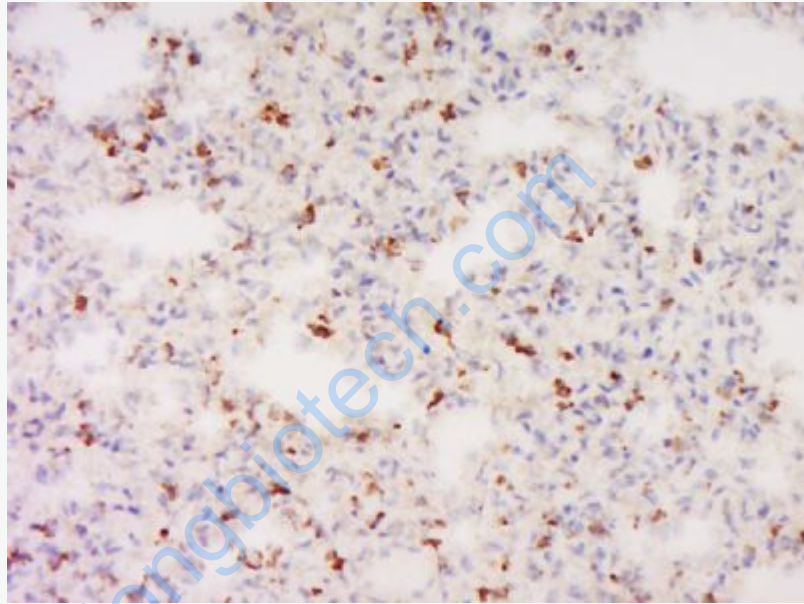
[Unigene: 83381](#)Human

[Unigene: 25547](#)Mouse

[Unigene: 892Rat](#)

**Important Note:**

This product as supplied is intended for research use only, not for use in human, therapeutic or diagnostic applications.



**Picture:**

Tissue/cell: Rat lung tissue; 4% Paraformaldehyde-fixed and paraffin-embedded;  
Antigen retrieval: citrate buffer ( 0.01M, pH 6.0 ), Boiling bathing for 15min; Block endogenous peroxidase by 3% Hydrogen peroxide for 30min; Blocking buffer (normal goat serum,C-0005) at 37°C for 20 min;  
Incubation: Anti-GNG11 Polyclonal Antibody, Unconjugated(SL13467R) 1:500, overnight at 4°C, followed by conjugation to the secondary antibody(SP-0023) and DAB(C-0010) staining