



Rabbit Anti-ZBED4 antibody

SL13554R

Product Name:	ZBED4
Chinese Name:	Zinc finger proteinBED4抗体
Alias:	Zinc finger BED domain containing 4; Zinc finger BED domain containing protein 4; Zinc finger BED type containing 4; ZBED4 HUMAN.
Organism Species:	Rabbit
Clonality:	Polyclonal
React Species:	Human,Mouse,Rat,Pig,Horse,
Applications:	WB=1:500-2000ELISA=1:500-1000IHC-P=1:400-800IHC-F=1:400-800ICC=1:100-500IF=1:100-500 (Paraffin sections need antigen repair) not yet tested in other applications. optimal dilutions/concentrations should be determined by the end user.
Molecular weight:	130kDa
Cellular localization:	The nucleuscytoplasmic
Form:	Lyophilized or Liquid
Concentration:	1mg/ml
immunogen:	KLH conjugated synthetic peptide derived from human ZBED4:101-200/1171
Lsotype:	IgG
Purification:	affinity purified by Protein A
Storage Buffer:	0.01M TBS(pH7.4) with 1% BSA, 0.03% Proclin300 and 50% Glycerol.
Storage:	Store at -20 °C for one year. Avoid repeated freeze/thaw cycles. The lyophilized antibody is stable at room temperature for at least one month and for greater than a year when kept at -20°C. When reconstituted in sterile pH 7.4 0.01M PBS or diluent of antibody the antibody is stable for at least two weeks at 2-4 °C.
PubMed:	PubMed
Product Detail:	The zinc finger BED domain-containing protein family (ZBED) is comprised of ZBED1, ZBED2, ZBED3, ZBED4 and ZBED5. They each contain one BED-type zinc finger domains with the exception of ZBED4, which contain 4 BED-type zinc finger domains. ZBED1 is thought to function as a transcription factor that regulates a number of ribosomal protein (RP) encoded genes by binding specifically to 5'-TGTCG[CT]GA[CT]A-3' DNA regions found in RP promoters. ZBED3 is an Axin-

binding protein involved in Wnt/beta-catenin signaling modulation. ZBED4 expression has been shown in human and mouse retinas where it is thought to act as a regulatory protein in cone photoreceptors and Müller cells. The functions of ZBED2 and ZBED5 have yet to be elucidated.

Subunit:

Homodimer.

Subcellular Location:

Cytoplasmic and Nuclear

Tissue Specificity:

Widely expressed with highest levels in testis, kidney and spinal cord and brain corpus callosum. Expressed in the retina, found in the cone photoreceptors, Mueller cells, cone pedicles and in the innermost retinal layer.

Similarity:

Contains 4 BED-type zinc fingers.

SWISS:

O75132

Gene ID:

9889

Database links:

[Entrez Gene: 9889](#) Human

[Omim: 612552](#) Human

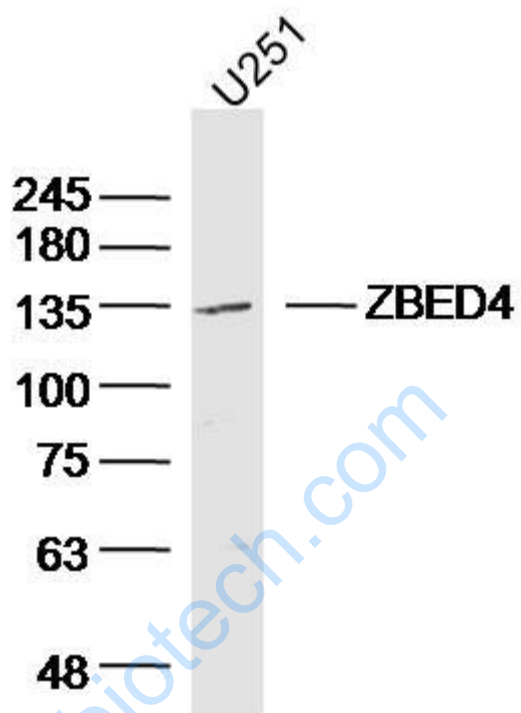
[SwissProt: O75132](#) Human

[Unigene: 475208](#) Human

Important Note:

This product as supplied is intended for research use only, not for use in human, therapeutic or diagnostic applications.

Picture:



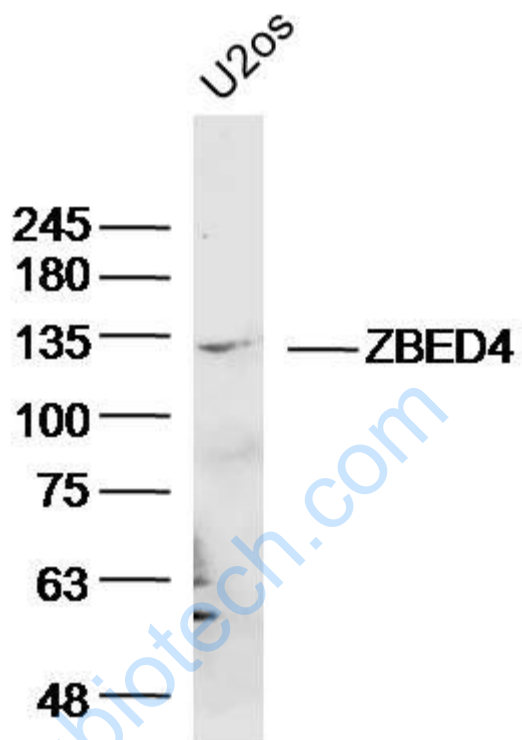
Sample: U251 (human)cell Lysate at 40 ug

Primary: Anti- ZBED4 (SL13554R)at 1/300 dilution

Secondary: IRDye800CW Goat Anti-Rabbit IgG at 1/20000 dilution

Predicted band size: 130 kD

Observed band size: 135 kD



Sample: U2os (human) cell Lysate at 40 ug

Primary: Anti- ZBED4 (SL13554R) at 1/300 dilution

Secondary: IRDye800CW Goat Anti-Rabbit IgG at 1/20000 dilution

Predicted band size: 130 kD

Observed band size: 130 kD