



Rabbit Anti-CATSPERB antibody

SL13607R

Product Name:	CATSPERB
Chinese Name:	阳离子通道精子相关蛋白β亚基抗体
Alias:	C14orf161; Cation channel sperm-associated protein subunit beta; Cation channel, sperm-associated, beta; Catsper channel auxiliary subunit beta; CatSper(beta); CATSPERB; FLJ14298; CTSRB HUMAN.
Organism Species:	Rabbit
Clonality:	Polyclonal
React Species:	Human,Mouse,Rat,Dog,
Applications:	WB=1:500-2000ELISA=1:500-1000IHC-P=1:400-800IHC-F=1:400-800ICC=1:100-500IF=1:100-500 (Paraffin sections need antigen repair) not yet tested in other applications. optimal dilutions/concentrations should be determined by the end user.
Molecular weight:	127kDa
Cellular localization:	The cell membrane
Form:	Lyophilized or Liquid
Concentration:	1mg/ml
immunogen:	KLH conjugated synthetic peptide derived from human CATSPERB:851-950/1116
Lsotype:	IgG
Purification:	affinity purified by Protein A
Storage Buffer:	0.01M TBS(pH7.4) with 1% BSA, 0.03% Proclin300 and 50% Glycerol.
Storage:	Store at -20 °C for one year. Avoid repeated freeze/thaw cycles. The lyophilized antibody is stable at room temperature for at least one month and for greater than a year when kept at -20°C. When reconstituted in sterile pH 7.4 0.01M PBS or diluent of antibody the antibody is stable for at least two weeks at 2-4 °C.
PubMed:	PubMed
Product Detail:	CatSper are ion transport proteins located on the surface of sperm cells in the principal piece of the sperm tail. CatSper are vital to sperm motility, fertilization and cAMP-mediated calcium influx in sperm. There are four CatSper proteins in mammalian sperm, namely CatSper (or CatSper1), CatSper2, CatSper3 and CatSper4. CatSper proteins are believed to assemble into a heterotetrameric complex, forming an alkalinization-

activated Ca²⁺-selective channel. CatSper β is a multipass membrane protein that functions as an auxiliary protein of the CatSper channel. It contains a large extracellular domain and a number of N-glycosylation sites. CatSper β specifically interacts with CatSper1 and through this interaction plays an important role in the hyperactivated motility of sperm cells, a process that is required in the preparation of sperm for fertilization.

Function:

RelevanceCATSPERB is a component of a complex composed at least of CATSPER1, CATSPERB, CATSPERG and HSPA1B. CATSPERB contains at least 2 transmembrane domains and 8 N-glycosylation sites. CATSPERB is required for trafficking or formation of a stable channel complex. It is involved in sperm cell hyperactivation via its association with CATSPER1. Sperm cell hyperactivation is needed for sperm motility which is essential late in the preparation of sperm for fertilization. There are 2 isoforms produced by alternative splicing.

Subcellular Location:

Membrane; Multi-pass membrane protein

SWISS:

Q9H7T0

Gene ID:

79820

Database links:

[Entrez Gene: 79820](#) Human

[Omim: 611169](#) Human

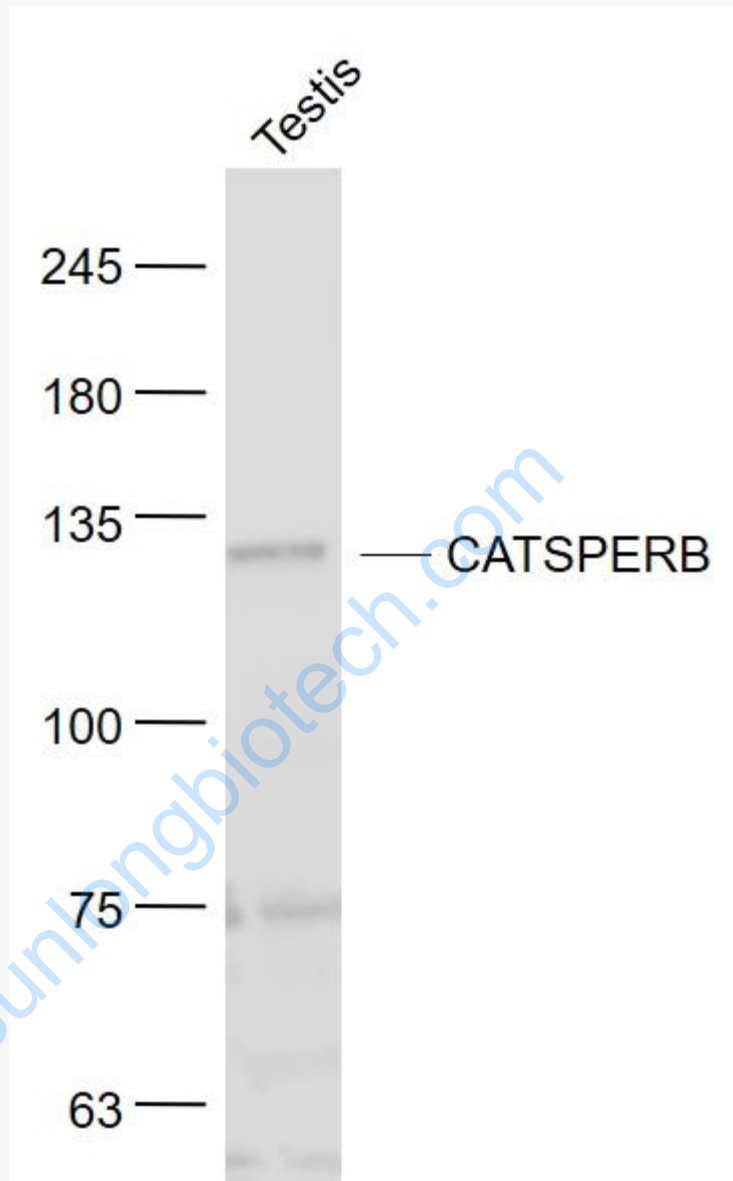
[SwissProt: Q9H7T0](#) Human

[Unigene: 131755](#) Human

Important Note:

This product as supplied is intended for research use only, not for use in human, therapeutic or diagnostic applications.

Picture:



Sample:

Testis (Mouse) Lysate at 40 ug

Primary: Anti- CATSPERB (SL13607R) at 1/1000 dilution

Secondary: IRDye800CW Goat Anti-Rabbit IgG at 1/20000 dilution

Predicted band size: 127 kD

	Observed band size: 127 kD
--	----------------------------

www.sunlongbiotech.com