



## Rabbit Anti-CLEC9A antibody

SL13621R

<b>Product Name:</b>	CLEC9A
<b>Chinese Name:</b>	C型凝集素结构域家族9成员A抗体
<b>Alias:</b>	C type lectin domain family 9, member A; C-type lectin domain family 9 member A; CLC9A_MOUSE; CLEC9A; DNGR1; HEEE9341; PRO34046; UNQ9341.
<b>Organism Species:</b>	Rabbit
<b>Clonality:</b>	Polyclonal
<b>React Species:</b>	Mouse,Rat,
<b>Applications:</b>	WB=1:500-2000ELISA=1:500-1000 not yet tested in other applications. optimal dilutions/concentrations should be determined by the end user.
<b>Molecular weight:</b>	27kDa
<b>Cellular localization:</b>	The cell membrane
<b>Form:</b>	Lyophilized or Liquid
<b>Concentration:</b>	1mg/ml
<b>immunogen:</b>	KLH conjugated synthetic peptide derived from mouse CLEC9A:1-100/238
<b>Lsotype:</b>	IgG
<b>Purification:</b>	affinity purified by Protein A
<b>Storage Buffer:</b>	0.01M TBS(pH7.4) with 1% BSA, 0.03% Proclin300 and 50% Glycerol.
<b>Storage:</b>	Store at -20 °C for one year. Avoid repeated freeze/thaw cycles. The lyophilized antibody is stable at room temperature for at least one month and for greater than a year when kept at -20°C. When reconstituted in sterile pH 7.4 0.01M PBS or diluent of antibody the antibody is stable for at least two weeks at 2-4 °C.
<b>PubMed:</b>	<a href="#">PubMed</a>
<b>Product Detail:</b>	The C-type lectin/C-type lectin-like domain (CTL/CTLD) superfamily consists of a variety of proteins that share a common protein fold and have diverse functions, including cell-cell signaling, cell adhesion, glycoprotein turnover and immune responses. CLEC-9A (C-type lectin domain family 9 member A), also known as DNGR1 (dendritic cell natural killer lectin group receptor 1), is a 241 amino acid single-pass type II membrane protein that contains one C-type lectin domain and belongs to the CTL/CTLD superfamily. Expressed in myeloid lineage cells, brain,

spleen and thymus, CLEC-9A is a group V C-type lectin-like receptor (CTLR) that acts as an activation receptor. The gene encoding CLEC-9A maps to human chromosome 12p13.2 and mouse chromosome 6 F3.

**Function:**

Functions as an endocytic receptor on a small subset of myeloid cells specialized for the uptake and processing of material from dead cells. Recognizes filamentous form of actin in association with particular actin-binding domains of cytoskeletal proteins, including spectrin, exposed when cell membranes are damaged, and mediate the cross-presentation of dead-cell associated antigens in a Syk-dependent manner.

**Subcellular Location:**

Membrane.

**Tissue Specificity:**

In peripheral blood highly restricted on the surface of BDCA31(+) dendritic cells and on a small subset of CD14(+) and CD16(-) monocytes.

**Post-translational modifications:**

N-glycosylated.

**Similarity:**

Contains 1 C-type lectin domain.

**SWISS:**

Q8BRU4

**Gene ID:**

232414

**Database links:**

[Entrez Gene: 232414](#) Mouse

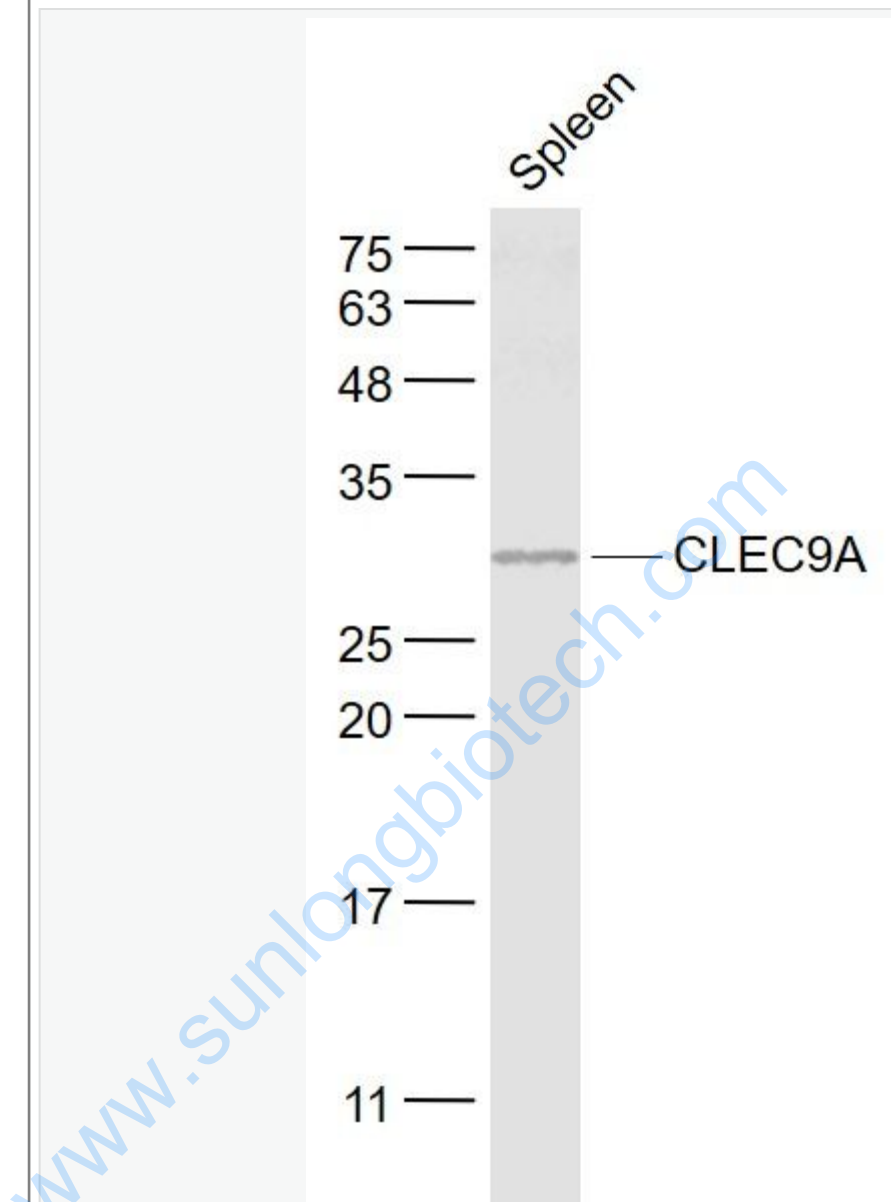
[SwissProt: Q8BRU4](#) Mouse

[Unigene: 391518](#) Mouse

**Important Note:**

This product as supplied is intended for research use only, not for use in human, therapeutic or diagnostic applications.

Picture:



Sample:

Spleen (Mouse) Lysate at 40 ug

Primary: Anti- CLEC9A (SL13621R) at 1/1000 dilution

Secondary: IRDye800CW Goat Anti-Rabbit IgG at 1/20000 dilution

Predicted band size: 27 kD

	Observed band size: 27 kD
--	---------------------------

[www.sunlongbiotech.com](http://www.sunlongbiotech.com)