



Rabbit Anti-CED6 antibody

SL13626R

| | |
|-------------------------------|---|
| Product Name: | CED6 |
| Chinese Name: | 细胞死亡同源蛋白6抗体 |
| Alias: | CED 6; Cell death protein 6 homolog; Engulfment adapter protein; Engulfment adaptor PTB domain containing 1; GULP; GULP, engulfment adaptor PTB domain containing 1; GULP1; GULP1_HUMAN; Protein GULP; PTB domain adapter protein CED 6; PTB domain adapter protein CED-6; PTB domain adaptor protein CED6; PTB domain-containing engulfment adapter protein 1. |
| Organism Species: | Rabbit |
| Clonality: | Polyclonal |
| React Species: | Human,Mouse,Pig,Cow,Horse,Rabbit,Sheep, |
| Applications: | ELISA=1:500-1000IHC-P=1:400-800IHC-F=1:400-800ICC=1:100-500IF=1:100-500 (Paraffin sections need antigen repair) not yet tested in other applications. optimal dilutions/concentrations should be determined by the end user. |
| Molecular weight: | 34kDa |
| Cellular localization: | cytoplasmic |
| Form: | Lyophilized or Liquid |
| Concentration: | 1mg/ml |
| immunogen: | KLH conjugated synthetic peptide derived from human CED6:31-130/304 |
| Lsotype: | IgG |
| Purification: | affinity purified by Protein A |
| Storage Buffer: | 0.01M TBS(pH7.4) with 1% BSA, 0.03% Proclin300 and 50% Glycerol. |
| Storage: | Store at -20 °C for one year. Avoid repeated freeze/thaw cycles. The lyophilized antibody is stable at room temperature for at least one month and for greater than a year when kept at -20°C. When reconstituted in sterile pH 7.4 0.01M PBS or diluent of antibody the antibody is stable for at least two weeks at 2-4 °C. |
| PubMed: | PubMed |
| Product Detail: | Several proteins involved in regulating and executing programmed cell death have been identified in <i>C. elegans</i> . CED-3, a member of the ICE protease/caspase family, and CED-4, a homolog of the mammalian Apaf-1, promote apoptosis. CED-9, a homolog of |

the mammalian Bcl-2 protein, inhibits cell death. EGL-1 and CED-6 both function as death-promoting proteins, with CED-6 playing a role in the engulfment of apoptotic cells. CED-5 and CED-7 are *C. elegans* orthologs of the mammalian DOCK180 and ABC transporter proteins, respectively, and also play a role in the engulfment of dying cells.

Function:

May function as an adapter protein. Required for efficient phagocytosis of apoptotic cells. Modulates cellular glycosphingolipid and cholesterol transport. May play a role in the internalization and endosomal trafficking of various LRP1 ligands, such as PSAP. Increases cellular levels of GTP-bound ARF6.

Subcellular Location:

Cytoplasm. May associate with the cytoplasmic side of the plasma membrane and early endosomes.

Tissue Specificity:

Widely expressed. Detected in macrophages, pancreas, kidney, skeletal muscle, heart, colon, intestine, lung, placenta and ovary.

Similarity:

Belongs to the ced-6 family.
Contains 1 PID domain.

SWISS:

Q9UBP9

Gene ID:

51454

Database links:

[Entrez Gene: 51454](#)Human

[Entrez Gene: 70676](#)Mouse

[Entrez Gene: 314543](#)Rat

[Omim: 608165](#)Human

[SwissProt: Q9UBP9](#)Human

[SwissProt: Q8K2A1](#)Mouse

[SwissProt: Q5PQS4](#)Rat

[Unigene: 470887](#)Human

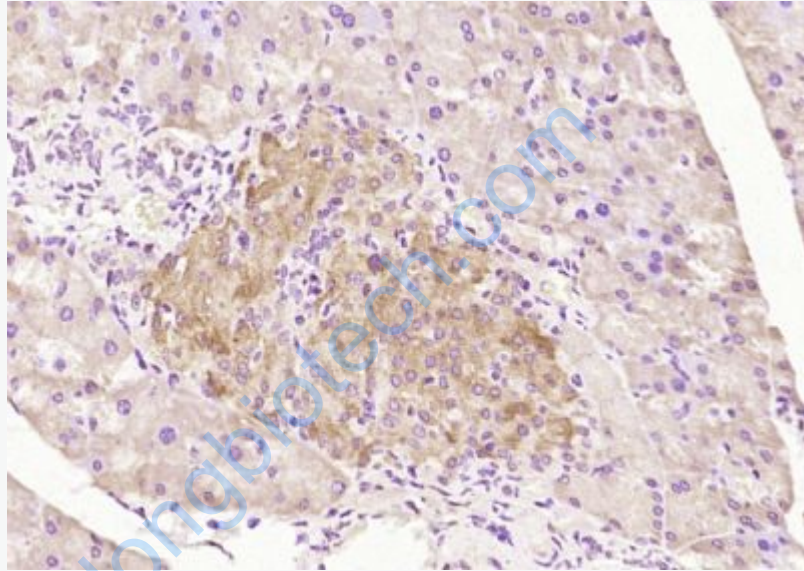
[Unigene: 712910](#)Human

[Unigene: 133132](#)Mouse

[Unigene: 32649](#)Rat

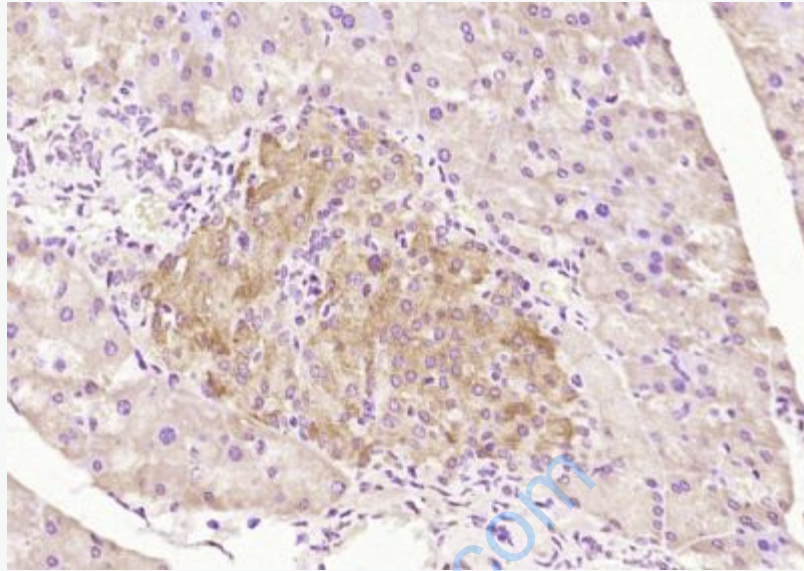
Important Note:

This product as supplied is intended for research use only, not for use in human, therapeutic or diagnostic applications.

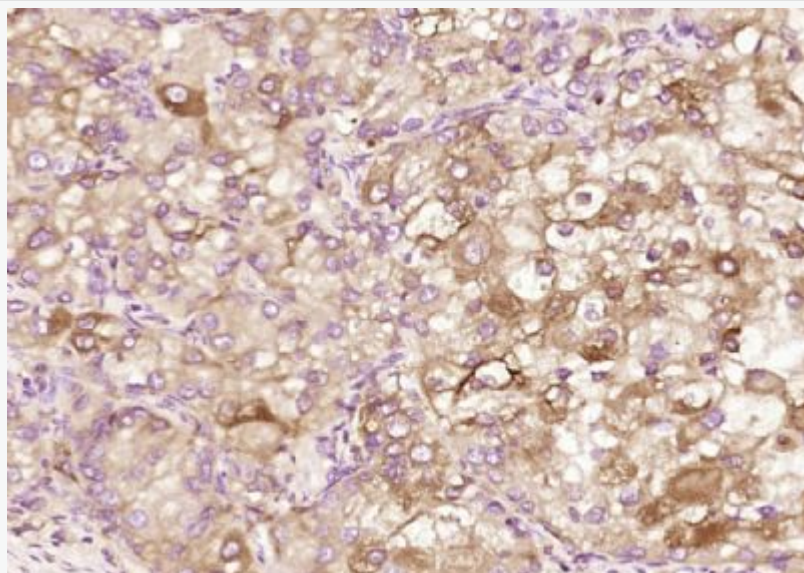


Picture:

Paraformaldehyde-fixed, paraffin embedded (mouse pancreas); Antigen retrieval by boiling in sodium citrate buffer (pH6.0) for 15min; Block endogenous peroxidase by 3% hydrogen peroxide for 20 minutes; Blocking buffer (normal goat serum) at 37°C for 30min; Antibody incubation with (CED6) Polyclonal Antibody, Unconjugated (SL13626R) at 1:200 overnight at 4°C, followed by operating according to SP Kit(Rabbit) (sp-0023) instructions and DAB staining.



Paraformaldehyde-fixed, paraffin embedded (mouse pancreas); Antigen retrieval by boiling in sodium citrate buffer (pH6.0) for 15min; Block endogenous peroxidase by 3% hydrogen peroxide for 20 minutes; Blocking buffer (normal goat serum) at 37°C for 30min; Antibody incubation with (CED6) Polyclonal Antibody, Unconjugated (SL13626R) at 1:200 overnight at 4°C, followed by operating according to SP Kit(Rabbit) (sp-0023) instructions and DAB staining.



Paraformaldehyde-fixed, paraffin embedded (Human kidney); Antigen retrieval by boiling in sodium citrate buffer (pH6.0) for 15min; Block endogenous peroxidase by 3% hydrogen peroxide for 20 minutes; Blocking buffer (normal goat serum) at 37°C for 30min; Antibody incubation with (CED6) Polyclonal Antibody, Unconjugated (SL13626R) at 1:200 overnight at 4°C, followed by operating according to SP Kit(Rabbit) (sp-0023) instructions and DAB staining.

www.sunlongbiotech.com