



## Rabbit Anti-SLAP antibody

SL13668R

<b>Product Name:</b>	SLAP
<b>Chinese Name:</b>	SLAP蛋白抗体
<b>Alias:</b>	hSLAP; SLA 1; SLA; SLA1; SLAP 1; SLAP; SLAP-1; SLAP1; SLAP1_HUMAN; Src like adapter; Src like adapter protein 1; Src like adaptor; SRC-like-adapter; Src-like-adapter protein 1.
<b>Organism Species:</b>	Rabbit
<b>Clonality:</b>	Polyclonal
<b>React Species:</b>	Human,Mouse,Rat,Pig,Cow,Horse,Rabbit,Sheep,
<b>Applications:</b>	WB=1:500-2000ELISA=1:500-1000IHC-P=1:400-800IHC-F=1:400-800ICC=1:100-500IF=1:100-500 (Paraffin sections need antigen repair) not yet tested in other applications. optimal dilutions/concentrations should be determined by the end user.
<b>Molecular weight:</b>	31kDa
<b>Cellular localization:</b>	cytoplasmic
<b>Form:</b>	Lyophilized or Liquid
<b>Concentration:</b>	1mg/ml
<b>immunogen:</b>	KLH conjugated synthetic peptide derived from human SLAP:21-120/276
<b>Isotype:</b>	IgG
<b>Purification:</b>	affinity purified by Protein A
<b>Storage Buffer:</b>	0.01M TBS(pH7.4) with 1% BSA, 0.03% Proclin300 and 50% Glycerol.
<b>Storage:</b>	Store at -20 癢 for one year. Avoid repeated freeze/thaw cycles. The lyophilized antibody is stable at room temperature for at least one month and for greater than a year when kept at -20癢. When reconstituted in sterile pH 7.4 0.01M PBS or diluent of antibody the antibody is stable for at least two weeks at 2-4 癢.
<b>PubMed:</b>	<a href="#">PubMed</a>
<b>Product Detail:</b>	The Src homology 3 (SH3) region is a small protein domain of approximately 60 amino acids present in a large group of proteins. In general, it exists in association with catalytic domains, as in the nonreceptor protein-tyrosine kinases and phospholipase C-? within structural proteins, such as spectrin or Myosin; and in small adapter proteins,

such as Crk and GRB2. SH3 domains are often accompanied by SH2 domains of 100 amino acids, which bind to tyrosine-phosphorylated regions of target proteins, frequently linking activated growth factors to putative signal transduction proteins. The functions of SH3 domains are not as well defined. Deletion or mutation of SH3 domains generally activate the transforming potential of nonreceptor tyrosine kinases, suggesting that SH3 mediates negative regulation of an intrinsic transforming activity. 3BP1 has been identified as a protein with a high affinity proline-rich binding site for the SH3 domain of c-Abl p120. A similar putative adapter protein, designated Slap, for Src-like adapter protein, has been cloned. Slap contains a single SH2 and SH3 domain that exhibits homology with those from members of the Src kinase family. The N- and C-termini, however, are unique.

**Function:**

Adapter protein, which negatively regulates T-cell receptor (TCR) signaling. Inhibits T-cell antigen-receptor induced activation of nuclear factor of activated T-cells. Involved in the negative regulation of positive selection and mitosis of T-cells. May act by linking signaling proteins such as ZAP70 with CBL, leading to a CBL dependent degradation of signaling proteins.

**Subunit:**

Interacts with EPHA2, VAV1, LCP2 and PDGFRB (By similarity). Homodimer. Homodimerization and interaction with phosphorylated CBL occurs via its C-terminal domain. Interacts with phosphorylated proteins ZAP70, CD3Z, SYK and LAT via its SH2 domain.

**Subcellular Location:**

Cytoplasm. Endosome. Colocalizes with endosomes.

**Tissue Specificity:**

Expressed in lung and fetal brain. Weakly expressed in heart, adult brain, placenta, liver, skeletal muscle, kidney and pancreas.

**Similarity:**

Contains 1 SH2 domain.

Contains 1 SH3 domain.

**SWISS:**

Q13239

**Gene ID:**

6503

**Database links:**

[Entrez Gene: 6503](#) Human

[Entrez Gene: 20491](#) Mouse

[Entrez Gene: 338477](#) Rat

[Omin: 601099](#) Human

[SwissProt: Q13239](#) Human

[SwissProt: Q60898](#) Mouse

[SwissProt: P59622](#) Rat

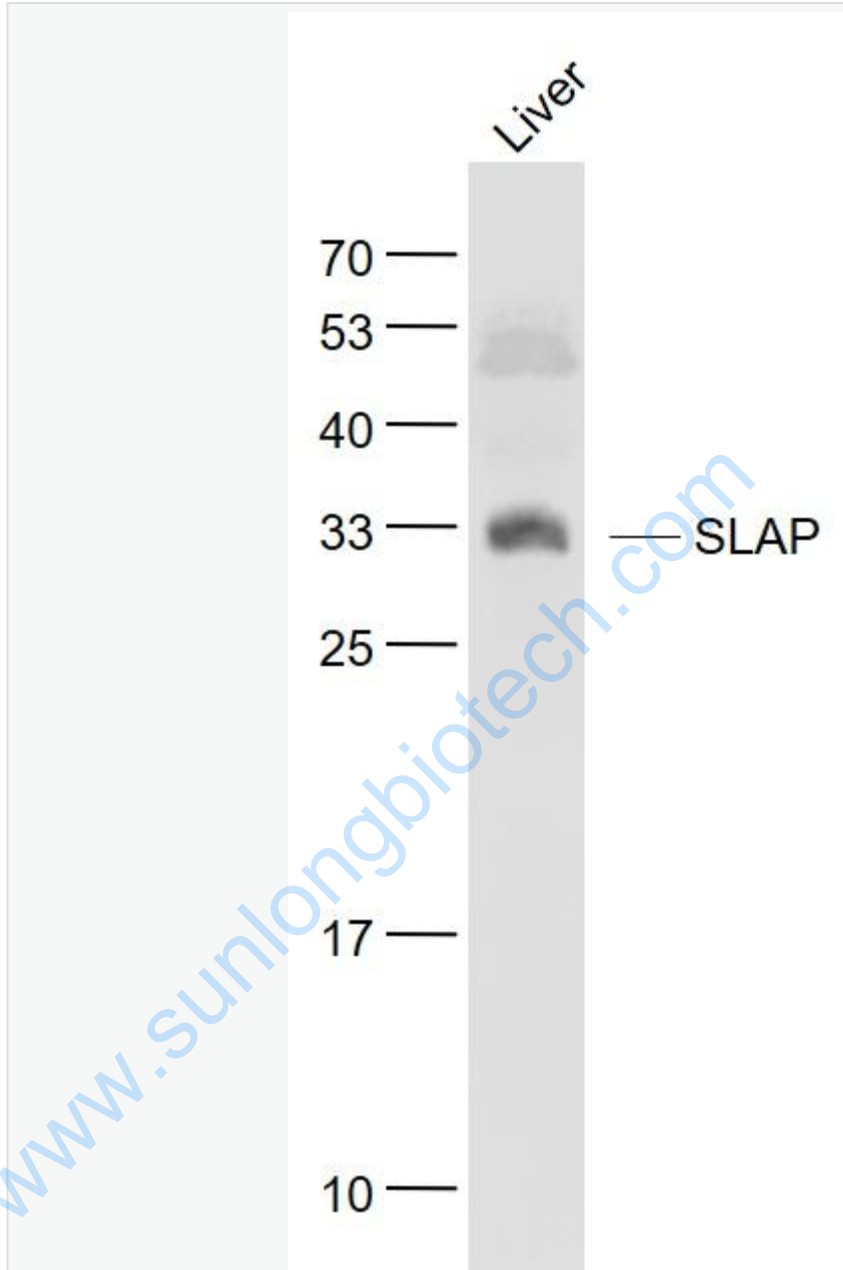
[Unigene: 75367](#) Human

**Important Note:**

This product as supplied is intended for research use only, not for use in human, therapeutic or diagnostic applications.

[www.sunlongbiotech.com](http://www.sunlongbiotech.com)

Picture:



Sample:

Liver(Mouse) Lysate at 40 ug

Primary: Anti- SLAP (SL13668R) at 1/1000 dilution

Secondary: IRDye800CW Goat Anti-Rabbit IgG at 1/20000 dilution

Predicted band size: 31 kD

	Observed band size: 33 kD
--	---------------------------

[www.sunlongbiotech.com](http://www.sunlongbiotech.com)