



Rabbit Anti-MS4A6A antibody

SL13692R

Product Name:	MS4A6A
Chinese Name:	四度Transmembrane protein3抗体
Alias:	4SPAN3; 4SPAN3.2; CD20 antigen like 3; CD20 like precursor; CD20L3; CDA01; Four span transmembrane protein 3; Four span transmembrane protein 3.1; Four span transmembrane protein 3.2; HAIRB iso; Membrane spanning 4 domains subfamily A member 6A; MS4A6; MS4A6A polymorph; MST090; MSTP090; M4A6A_HUMAN.
Organism Species:	Rabbit
Clonality:	Polyclonal
React Species:	Human,Rat,
Applications:	WB=1:500-2000ELISA=1:500-1000IHC-P=1:400-800IHC-F=1:400-800ICC=1:100-500IF=1:100-500 (Paraffin sections need antigen repair) not yet tested in other applications. optimal dilutions/concentrations should be determined by the end user.
Molecular weight:	27kDa
Cellular localization:	The cell membrane
Form:	Lyophilized or Liquid
Concentration:	1mg/ml
immunogen:	KLH conjugated synthetic peptide derived from human MS4A6A:51-150/248
Lsotype:	IgG
Purification:	affinity purified by Protein A
Storage Buffer:	0.01M TBS(pH7.4) with 1% BSA, 0.03% Proclin300 and 50% Glycerol.
Storage:	Store at -20 °C for one year. Avoid repeated freeze/thaw cycles. The lyophilized antibody is stable at room temperature for at least one month and for greater than a year when kept at -20°C. When reconstituted in sterile pH 7.4 0.01M PBS or diluent of antibody the antibody is stable for at least two weeks at 2-4 °C.
PubMed:	PubMed
Product Detail:	MS4A6A is a member of the membrane-spanning 4A gene family and may be involved in signal transduction as a component of a multimeric receptor complex. There are three named isoforms.

Function:

May be involved in signal transduction as a component of a multimeric receptor complex.

Subcellular Location:

Membrane; Multi-pass membrane protein.

Tissue Specificity:

Variable expression in some B-cell, myelomonocytic, and erythroleukemia cell lines.

Similarity:

Belongs to the MS4A family.

SWISS:

Q9H2W1

Gene ID:

64231

Database links:

[Entrez Gene: 64231](#) Human

[Entrez Gene: 293750](#) Rat

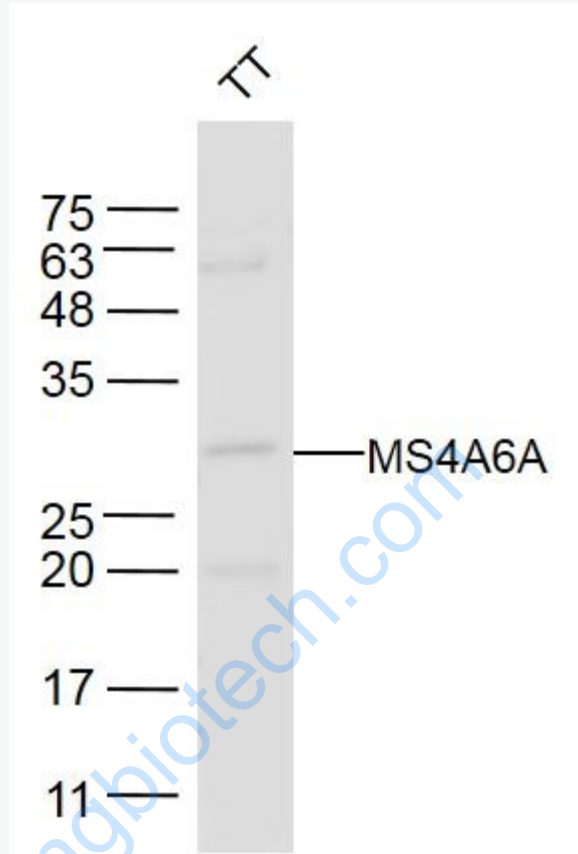
[Oimim: 606548](#) Human

[SwissProt: Q9H2W1](#) Human

Important Note:

This product as supplied is intended for research use only, not for use in human, therapeutic or diagnostic applications.

Picture:



Sample:

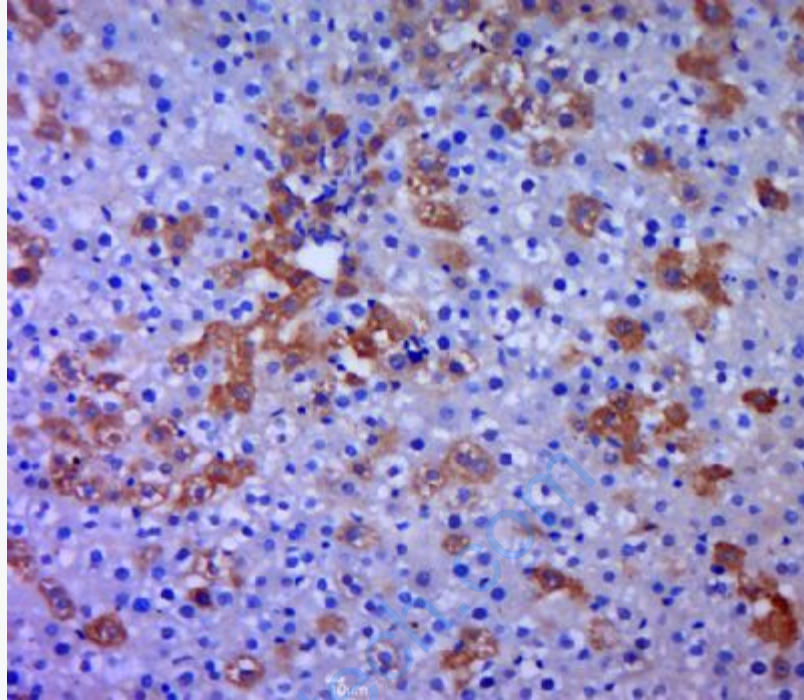
TT(Human) Cell Lysate at 40 ug

Primary: Anti-MS4A6A (SL13692R) at 1/300 dilution

Secondary: IRDye800CW Goat Anti-Rabbit IgG at 1/20000 dilution

Predicted band size: 27 kD

Observed band size: 27 kD



Paraformaldehyde-fixed, paraffin embedded (rat liver tissue); Antigen retrieval by boiling in sodium citrate buffer (pH6.0) for 15min; Block endogenous peroxidase by 3% hydrogen peroxide for 20 minutes; Blocking buffer (normal goat serum) at 37°C for 30min; Antibody incubation with (MS4A6A) Polyclonal Antibody, Unconjugated (SL13692R) at 1:400 overnight at 4°C, followed by a conjugated secondary (sp-0023) for 20 minutes and DAB staining.