



Rabbit Anti-LAD1 antibody

SL13708R

Product Name:	LAD1
Chinese Name:	LAD1蛋白抗体
Alias:	LAD; Lad 1; Lad-1; Lad1; LAD1_HUMAN; LADA; Ladinin 1; Ladinin-1; Linear IgA bullous dermatosis antigen; Linear IgA disease antigen; Linear IgA disease antigen homolog; MGC10355.
Organism Species:	Rabbit
Clonality:	Polyclonal
React Species:	Human,Mouse,Rat,Horse,Rabbit,
Applications:	WB=1:500-2000ELISA=1:500-1000IHC-P=1:400-800IHC-F=1:400-800ICC=1:100-500IF=1:100-500 (Paraffin sections need antigen repair) not yet tested in other applications. optimal dilutions/concentrations should be determined by the end user.
Molecular weight:	57kDa
Cellular localization:	cytoplasmic
Form:	Lyophilized or Liquid
Concentration:	1mg/ml
immunogen:	KLH conjugated synthetic peptide derived from human LAD1:331-430/517
Lsotype:	IgG
Purification:	affinity purified by Protein A
Storage Buffer:	0.01M TBS(pH7.4) with 1% BSA, 0.03% Proclin300 and 50% Glycerol.
Storage:	Store at -20 °C for one year. Avoid repeated freeze/thaw cycles. The lyophilized antibody is stable at room temperature for at least one month and for greater than a year when kept at -20°C. When reconstituted in sterile pH 7.4 0.01M PBS or diluent of antibody the antibody is stable for at least two weeks at 2-4 °C.
PubMed:	PubMed
Product Detail:	Anchoring filament protein which is a component of the basement membrane zone. Subcellular Location: Secreted > extracellular space > extracellular matrix > basement membrane.

SWISS:
O00515

Gene ID:
3898

Database links:

[Entrez Gene: 3898](#) Human

[Omim: 602314](#) Human

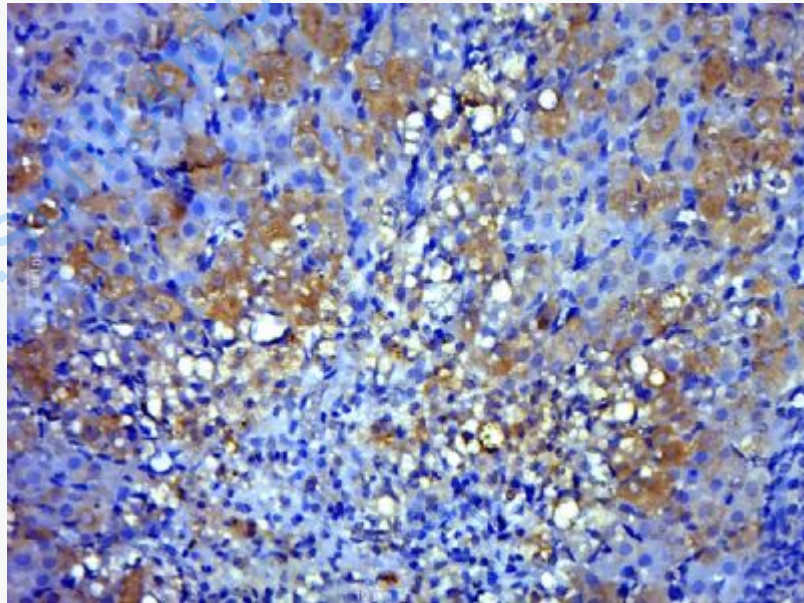
[SwissProt: O00515](#) Human

[Unigene: 519035](#) Human

Important Note:

This product as supplied is intended for research use only, not for use in human, therapeutic or diagnostic applications.

Picture:



Paraformaldehyde-fixed, paraffin embedded (Rat ovary); Antigen retrieval by boiling in sodium citrate buffer (pH6.0) for 15min; Block endogenous peroxidase by 3% hydrogen peroxide for 20 minutes; Blocking buffer (normal goat serum) at 37°C

for 30min; Antibody incubation with (LAD1) Polyclonal Antibody, Unconjugated (SL13708R) at 1:500 overnight at 4°C, followed by a conjugated secondary (sp-0023) for 20 minutes and DAB staining.

www.sunlongbiotech.com