



## Rabbit Anti-Connexin 31.1 antibody

SL13734R

<b>Product Name:</b>	Connexin 31.1
<b>Chinese Name:</b>	间隙连接蛋白31.1/GJB5抗体
<b>Alias:</b>	Connexin 31.1; Connexin-31.1; Connexin31.1; Cx31.1; CXB5_HUMAN; Gap junction beta 5 protein; Gap junction beta-5 protein; Gap junction protein beta 5 31.1kDa; Gap junction protein beta 5; GJB 5; GJB5.
<b>Organism Species:</b>	Rabbit
<b>Clonality:</b>	Polyclonal
<b>React Species:</b>	Human,Mouse,Rat,Dog,Cow,Horse,Rabbit,Sheep,
<b>Applications:</b>	WB=1:500-2000ELISA=1:500-1000IHC-P=1:400-800IHC-F=1:400-800ICC=1:100-500IF=1:100-500 (Paraffin sections need antigen repair) not yet tested in other applications. optimal dilutions/concentrations should be determined by the end user.
<b>Molecular weight:</b>	31kDa
<b>Cellular localization:</b>	The cell membrane
<b>Form:</b>	Lyophilized or Liquid
<b>Concentration:</b>	1mg/ml
<b>immunogen:</b>	KLH conjugated synthetic peptide derived from human Connexin 31.1:1-100/273
<b>Lsotype:</b>	IgG
<b>Purification:</b>	affinity purified by Protein A
<b>Storage Buffer:</b>	0.01M TBS(pH7.4) with 1% BSA, 0.03% Proclin300 and 50% Glycerol.
<b>Storage:</b>	Store at -20 癆 for one year. Avoid repeated freeze/thaw cycles. The lyophilized antibody is stable at room temperature for at least one month and for greater than a year when kept at -20癆. When reconstituted in sterile pH 7.4 0.01M PBS or diluent of antibody the antibody is stable for at least two weeks at 2-4 癆.
<b>PubMed:</b>	<a href="#">PubMed</a>
<b>Product Detail:</b>	The connexin family of proteins form hexameric complexes, called connexons, that facilitate movement of low molecular weight proteins between cells via gap junctions. Connexin proteins share a common topology of four transmembrane ?helical domains, two extracellular loops, a cytoplasmic loop and cytoplasmic N- and C-termini. Many of

the key functional differences arise from specific amino acid substitutions in the most highly conserved domains; the transmembrane and extracellular regions. Connexin 31.1, Cx31.1 or Gap junction beta-5 protein, is a 271 amino acid protein that is predominantly expressed in skin with lower expression in testis. Expression of connexin 31.1 is required for normal placental development in mice. Down-regulation of the connexin 31.1 gene correlates with head and neck squamous cell carcinomas (HNSCC) and therefore it may be a potential therapeutic target.

**Function:**

One gap junction consists of a cluster of closely packed pairs of transmembrane channels, the connexons, through which materials of low MW diffuse from one cell to a neighboring cell.

**Subcellular Location:**

Cell membrane. Cell junction > gap junction.

**Similarity:**

Belongs to the connexin family. Beta-type (group I) subfamily.

**SWISS:**

O95377

**Gene ID:**

2709

**Database links:**

[Entrez Gene: 2709](#) Human

[Omim: 604493](#) Human

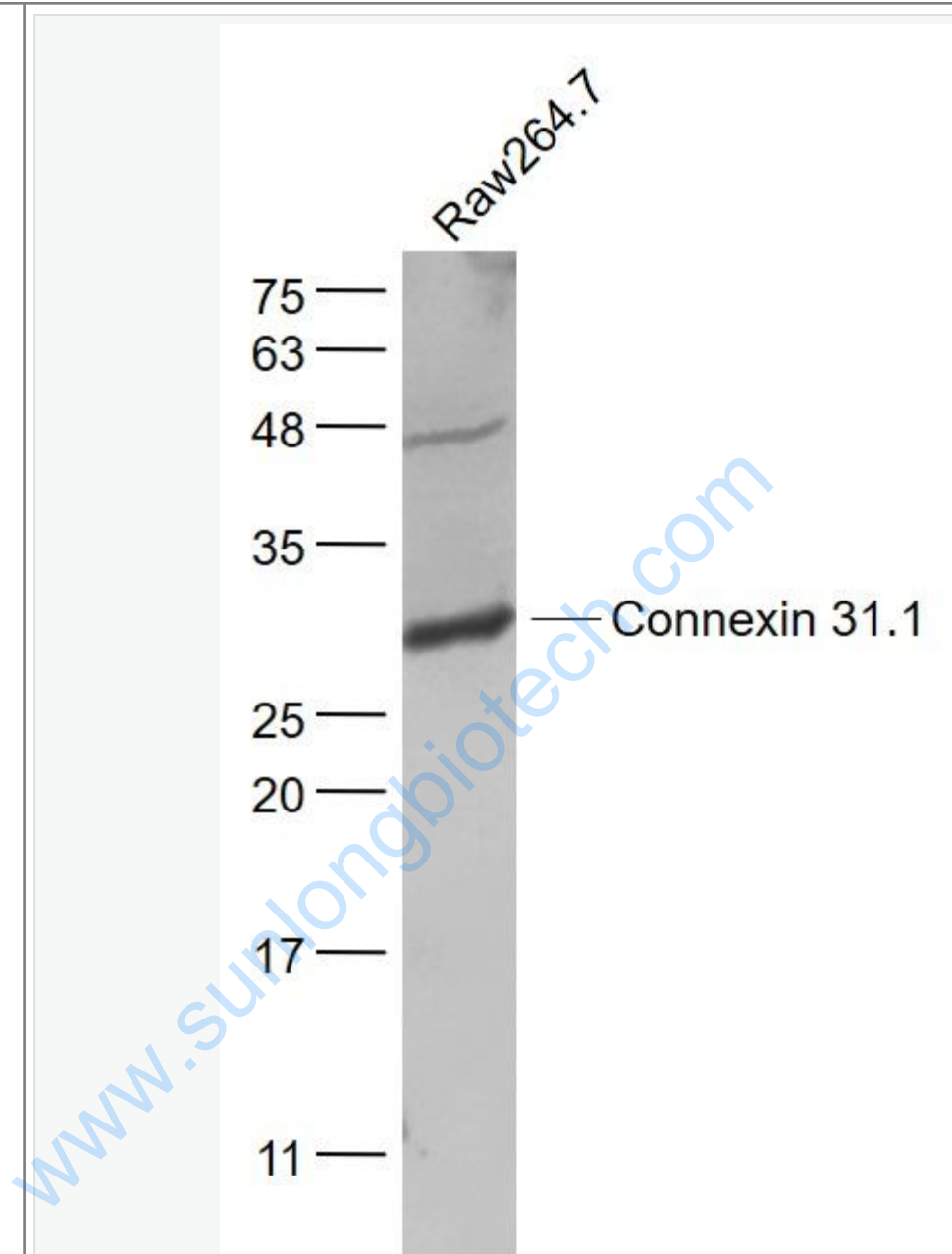
[SwissProt: O95377](#) Human

[Unigene: 198249](#) Human

**Important Note:**

This product as supplied is intended for research use only, not for use in human, therapeutic or diagnostic applications.

Picture:



Sample:

Raw264.7(Mouse) Cell Lysate at 30 ug

Primary: Anti- Connexin 31.1 (SL13734R) at 1/1000 dilution

Secondary: IRDye800CW Goat Anti-Rabbit IgG at 1/20000 dilution

Predicted band size: 31 kD

	Observed band size: 31 kD
--	---------------------------

[www.sunlongbiotech.com](http://www.sunlongbiotech.com)