



Rabbit Anti-SHROOM1 antibody

SL13735R

Product Name:	SHROOM1
Chinese Name:	SHROOM1蛋白抗体
Alias:	Apical protein 2; APXL2; Protein Shroom1; SHRM1_HUMAN; Shroom family member 1; Shroom1.
Organism Species:	Rabbit
Clonality:	Polyclonal
React Species:	Human,Mouse,Rat,Dog,Cow,Sheep,
Applications:	ELISA=1:500-1000IHC-P=1:400-800IHC-F=1:400-800ICC=1:100-500IF=1:100-500 (Paraffin sections need antigen repair) not yet tested in other applications. optimal dilutions/concentrations should be determined by the end user.
Molecular weight:	90kDa
Cellular localization:	cytoplasmic
Form:	Lyophilized or Liquid
Concentration:	1mg/ml
immunogen:	KLH conjugated synthetic peptide derived from human SHROOM1:121-220/852
Lsotype:	IgG
Purification:	affinity purified by Protein A
Storage Buffer:	0.01M TBS(pH7.4) with 1% BSA, 0.03% Proclin300 and 50% Glycerol.
Storage:	Store at -20 °C for one year. Avoid repeated freeze/thaw cycles. The lyophilized antibody is stable at room temperature for at least one month and for greater than a year when kept at -20°C. When reconstituted in sterile pH 7.4 0.01M PBS or diluent of antibody the antibody is stable for at least two weeks at 2-4 °C.
PubMed:	PubMed
Product Detail:	SHROOM1 is an 852 amino acid protein that contains one ASD1 domain and one ASD2 domain. Localized to both the cytoplasm and the cytoskeleton, SHROOM1 interacts with Actin and is thought to be involved in microtubule assembly during cell elongation, possibly playing a role in the development of the nervous system. Multiple isoforms of SHROOM1 exist due to alternative splicing events. The gene encoding SHROOM1 maps to human chromosome 5, which contains 181 million base pairs and comprises

nearly 6% of the human genome. Deletion of the p arm of chromosome 5 leads to Cri du chat syndrome, while deletion of the q arm or of chromosome 5 altogether is common in therapy-related acute myelogenous leukemias and myelodysplastic syndrome.

Function:

May be involved in the assembly of microtubule arrays during cell elongation.

Subcellular Location:

Cytoplasm; cytoskeleton.

Similarity:

Belongs to the shroom family.

Contains 1 ASD1 domain.

Contains 1 ASD2 domain.

SWISS:

Q2M3G4

Gene ID:

134549

Database links:

[Entrez Gene: 134549](#) Human

[Entrez Gene: 71774](#) Mouse

[Entrez Gene: 287285](#) Rat

[Olim: 611179](#) Human

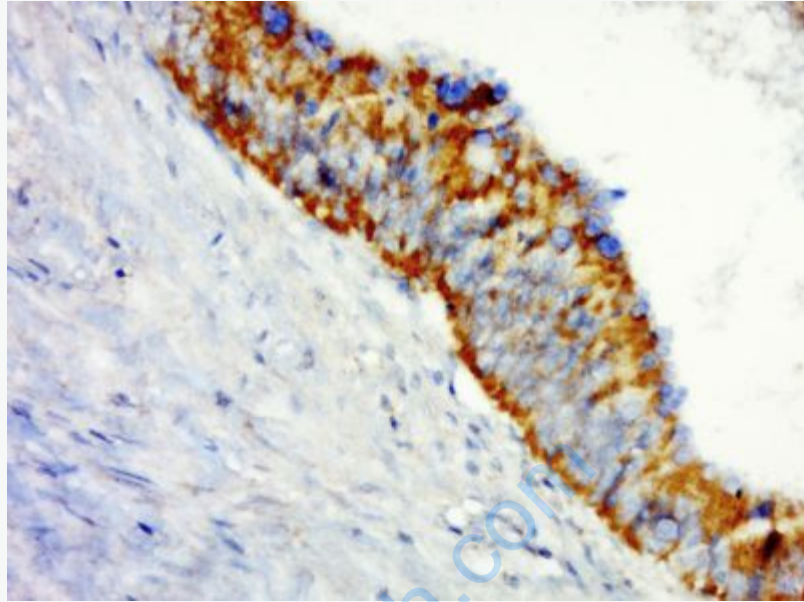
[SwissProt: Q2M3G4](#) Human

[SwissProt: Q5SX79](#) Mouse

[Unigene: 519574](#) Human

Important Note:

This product as supplied is intended for research use only, not for use in human, therapeutic or diagnostic applications.



Picture:

Paraformaldehyde-fixed, paraffin embedded (human colon cancer); Antigen retrieval by boiling in sodium citrate buffer (pH6.0) for 15min; Block endogenous peroxidase by 3% hydrogen peroxide for 20 minutes; Blocking buffer (normal goat serum) at 37°C for 30min; Antibody incubation with (Claudin) Polyclonal Antibody, Unconjugated (SL13735R) at 1:500 overnight at 4°C, followed by a conjugated secondary (sp-0023) for 20 minutes and DAB staining.