



Rabbit Anti-CLDN25 antibody

SL13745R

Product Name:	CLDN25
Chinese Name:	紧密连接蛋白25抗体
Alias:	claudin 25; CLD25_HUMAN; CLDN25; Gm16492; Gm513; Putative claudin-25.
Organism Species:	Rabbit
Clonality:	Polyclonal
React Species:	Human,Dog,Horse,
Applications:	WB=1:500-2000ELISA=1:500-1000IHC-P=1:400-800IHC-F=1:400-800ICC=1:100-500IF=1:100-500 (Paraffin sections need antigen repair) not yet tested in other applications. optimal dilutions/concentrations should be determined by the end user.
Molecular weight:	25kDa
Cellular localization:	The cell membrane
Form:	Lyophilized or Liquid
Concentration:	1mg/ml
immunogen:	KLH conjugated synthetic peptide derived from human CLDN25:101-200/229
Lsotype:	IgG
Purification:	affinity purified by Protein A
Storage Buffer:	0.01M TBS(pH7.4) with 1% BSA, 0.03% Proclin300 and 50% Glycerol.
Storage:	Store at -20 °C for one year. Avoid repeated freeze/thaw cycles. The lyophilized antibody is stable at room temperature for at least one month and for greater than a year when kept at -20°C. When reconstituted in sterile pH 7.4 0.01M PBS or diluent of antibody the antibody is stable for at least two weeks at 2-4 °C.
PubMed:	PubMed
Product Detail:	<p>Plays a major role in tight junction-specific obliteration of the intercellular space, through calcium-independent cell-adhesion activity.</p> <p>Subcellular Location: Cell junction > tight junction. Cell membrane.</p> <p>Similarity:</p>

Belongs to the claudin family.

SWISS:
C9JDP6

Gene ID:
664672

Database links:

[Entrez Gene: 644672](#)Human

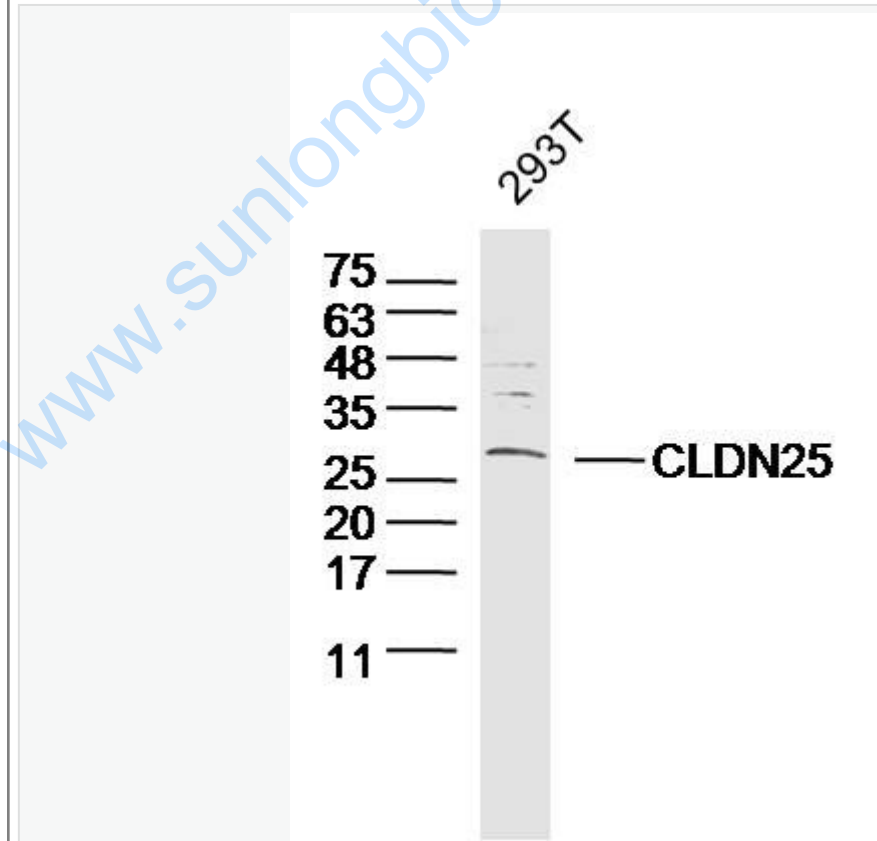
[SwissProt: C9JDP6](#)Human

[Unigene: 705360](#)Human

Important Note:

This product as supplied is intended for research use only, not for use in human, therapeutic or diagnostic applications.

Picture:



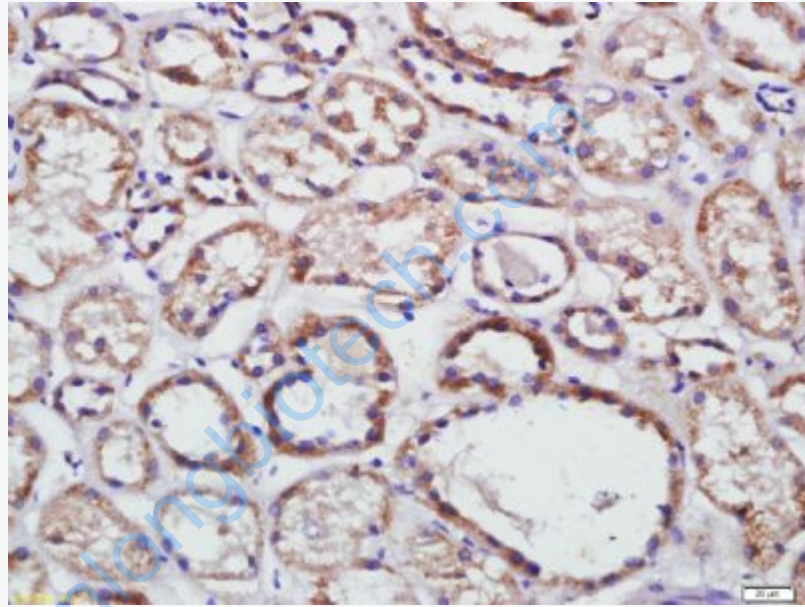
Sample: 293T (human)cell Lysate at 40 ug

Primary: Anti- CLDN25(SL13745R)at 1/300 dilution

Secondary: IRDye800CW Goat Anti-Rabbit IgG at 1/20000 dilution

Predicted band size: 25kD

Observed band size: 28 kD



Tissue/cell: human kidney tissue; 4% Paraformaldehyde-fixed and paraffin-embedded;

Antigen retrieval: citrate buffer (0.01M, pH 6.0), Boiling bathing for 15min; Block endogenous peroxidase by 3% Hydrogen peroxide for 30min; Blocking buffer (normal goat serum,C-0005) at 37°C for 20 min;

Incubation: Anti-CLDN25 Polyclonal Antibody, Unconjugated(SL13745R) 1:500, overnight at 4°C, followed by conjugation to the secondary antibody(SP-0023) and DAB(C-0010) staining