



Rabbit Anti-Claudin 23 antibody

SL13746R

Product Name:	Claudin 23
Chinese Name:	紧密连接蛋白23抗体
Alias:	2310014B08Rik; Claudin23; CLDN 23; CLDN23; CLDNL; CLD23 HUMAN.
Organism Species:	Rabbit
Clonality:	Polyclonal
React Species:	Human,Mouse,Rat,Dog,Pig,Cow,Rabbit,
Applications:	ELISA=1:500-1000IHC-P=1:400-800IHC-F=1:400-800ICC=1:100-500IF=1:100-500 (Paraffin sections need antigen repair) not yet tested in other applications. optimal dilutions/concentrations should be determined by the end user.
Molecular weight:	32kDa
Cellular localization:	The cell membrane
Form:	Lyophilized or Liquid
Concentration:	1mg/ml
immunogen:	KLH conjugated synthetic peptide derived from human Claudin 23:25-81/292<Extracellular>
Lsotype:	IgG
Purification:	affinity purified by Protein A
Storage Buffer:	0.01M TBS(pH7.4) with 1% BSA, 0.03% Proclin300 and 50% Glycerol.
Storage:	Store at -20 °C for one year. Avoid repeated freeze/thaw cycles. The lyophilized antibody is stable at room temperature for at least one month and for greater than a year when kept at -20°C. When reconstituted in sterile pH 7.4 0.01M PBS or diluent of antibody the antibody is stable for at least two weeks at 2-4 °C.
PubMed:	PubMed
Product Detail:	The claudin superfamily consists of structurally related proteins that are important structural and functional components of tight junctions. Claudin-23, also known as CLDN23 or CLDNL, is a 292 amino acid multi-pass membrane protein that localizes to cell junctions and belongs to the claudin family. Expressed in stomach and placenta, as well as in germinal center B-cells, claudin-23 is thought to exhibit calcium-dependent cell-adhesion activity through which it plays an essential role in tight junction-specific

obliteration of the intercellular space. Human claudin-23 shares 80% sequence similarity with its mouse counterpart, suggesting a conserved role between species. Overexpression of claudin-23 is associated with colon tumors, implicating claudin-23 as a possible metastasis factor.

Subcellular Location:

Integral membrane protein. Tight junctions

Similarity:

Belongs to the claudin family.

SWISS:

Q96B33

Gene ID:

137075

Database links:

[Entrez Gene: 137075](#) Human

[Entrez Gene: 71908](#) Mouse

[Omim: 609203](#) Human

[SwissProt: Q96B33](#) Human

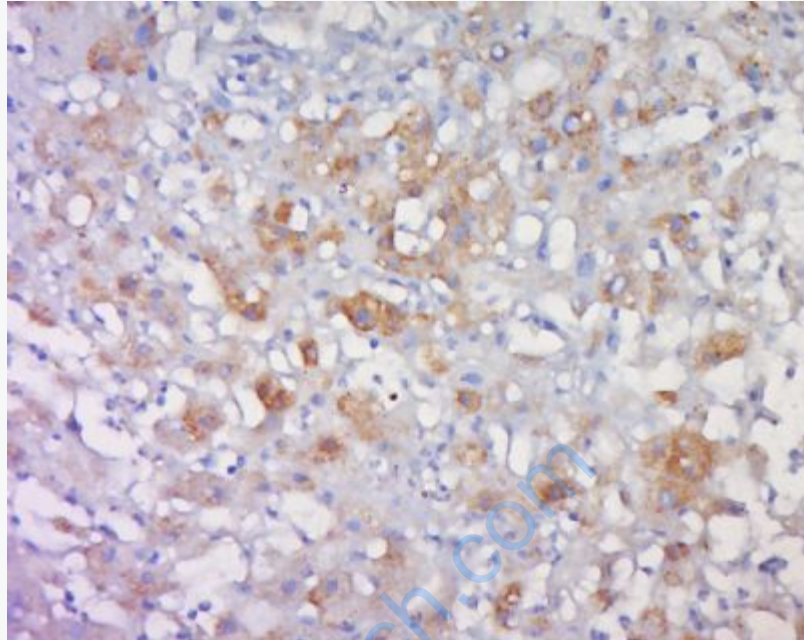
[SwissProt: Q9D7D7](#) Mouse

[Unigene: 183617](#) Human

[Unigene: 37817](#) Mouse

Important Note:

This product as supplied is intended for research use only, not for use in human, therapeutic or diagnostic applications.



Picture:

Tissue/cell: human liver cancer; 4% Paraformaldehyde-fixed and paraffin-embedded;

Antigen retrieval: citrate buffer (0.01M, pH 6.0), Boiling bathing for 15min; Block endogenous peroxidase by 3% Hydrogen peroxide for 30min; Blocking buffer (normal goat serum,C-0005) at 37°C for 20 min;

Incubation: Anti-Claudin 23 Polyclonal Antibody, Unconjugated(SL13746R) 1:500, overnight at 4°C, followed by conjugation to the secondary antibody(SP-0023) and DAB(C-0010) staining