



## Rabbit Anti-CECR2 antibody

SL13824R

<b>Product Name:</b>	CECR2
<b>Chinese Name:</b>	猫眼综合征染色体候选基因2抗体
<b>Alias:</b>	Cat eye syndrome chromosome region candidate 2; CECR2 HUMAN; KIAA1740.
<b>Organism Species:</b>	Rabbit
<b>Clonality:</b>	Polyclonal
<b>React Species:</b>	Human,Mouse,Rat,Chicken,Dog,Horse,
<b>Applications:</b>	ELISA=1:500-1000IHC-P=1:400-800 (Paraffin sections need antigen repair) not yet tested in other applications. optimal dilutions/concentrations should be determined by the end user.
<b>Molecular weight:</b>	59/164kDa
<b>Cellular localization:</b>	The nucleus
<b>Form:</b>	Lyophilized or Liquid
<b>Concentration:</b>	1mg/ml
<b>immunogen:</b>	KLH conjugated synthetic peptide derived from human CECR2:201-300/1484
<b>Lsotype:</b>	IgG
<b>Purification:</b>	affinity purified by Protein A
<b>Storage Buffer:</b>	0.01M TBS(pH7.4) with 1% BSA, 0.03% Proclin300 and 50% Glycerol.
<b>Storage:</b>	Store at -20 °C for one year. Avoid repeated freeze/thaw cycles. The lyophilized antibody is stable at room temperature for at least one month and for greater than a year when kept at -20°C. When reconstituted in sterile pH 7.4 0.01M PBS or diluent of antibody the antibody is stable for at least two weeks at 2-4 °C.
<b>PubMed:</b>	<a href="#">PubMed</a>
<b>Product Detail:</b>	<p>Bromodomains are 110 amino acid long domains, that are found in many chromatin associated proteins. Bromodomains can interact specifically with acetylated lysine. This family consists of several mammalian T-cell surface antigen CD2 proteins as well as homologous African swine fever virus sequences.</p> <p><b>Function:</b> Part of the CERF (CECR2-containing-remodeling factor) complex, which facilitates the perturbation of chromatin structure in an ATP-dependent manner. May be involved</p>

through its interaction with LRPPRC in the integration of cytoskeletal network with vesicular trafficking, nucleocytoplasmic shuttling, transcription, chromosome remodeling and cytokinesis.

**Subunit:**

Part of the CECR2-containing remodeling factor (CERF) complex which contains CECR2 and SMARCA1. Interacts with acetylated lysine residues on histone H2A and H3 (in vitro). Interacts with LRPPRC.

**Tissue Specificity:**

Highly expressed in skeletal muscle, thymus, placenta and lung. Expressed at lower level in brain, heart, colon, spleen, kidney.

**Similarity:**

Contains 1 bromo domain.

**SWISS:**

Q9BXF3

**Gene ID:**

27443

**Database links:**

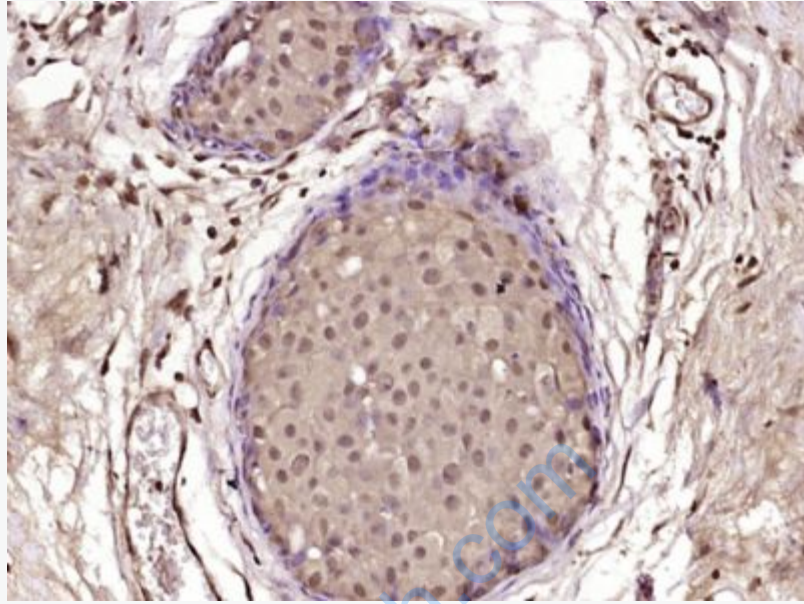
[Entrez Gene: 27443](#) Human

[Omim: 607576](#) Human

[SwissProt: Q9BXF3](#) Human

**Important Note:**

This product as supplied is intended for research use only, not for use in human, therapeutic or diagnostic applications.



**Picture:**

Paraformaldehyde-fixed, paraffin embedded (Human breast carcinoma); Antigen retrieval by boiling in sodium citrate buffer (pH6.0) for 15min; Block endogenous peroxidase by 3% hydrogen peroxide for 20 minutes; Blocking buffer (normal goat serum) at 37°C for 30min; Antibody incubation with (CECR2) Polyclonal Antibody, Unconjugated (SL13824R) at 1:400 overnight at 4°C, followed by operating according to SP Kit(Rabbit) (sp-0023) instructions and DAB staining.