



## Rabbit Anti-CELF3 antibody

SL13830R

<b>Product Name:</b>	CELF3
<b>Chinese Name:</b>	CELF3蛋白抗体
<b>Alias:</b>	Bruno-like protein 1; BRUNOL1; CAG repeat protein 4; CAGH4; CELF-3; CELF3; CELF3_HUMAN; CUG-BP- and ETR-3-like factor 3; CUGBP Elav-like family member 3; ELAV-type RNA-binding protein 1; ERDA4; ETR-1; Expanded repeat domain protein CAG/CTG 4; RNA-binding protein BRUNOL-1; TNRC4; Trinucleotide repeat-containing gene 4 protein.
<b>Organism Species:</b>	Rabbit
<b>Clonality:</b>	Polyclonal
<b>React Species:</b>	Human,Mouse,Rat,Chicken,Pig,Cow,
<b>Applications:</b>	WB=1:500-2000ELISA=1:500-1000IHC-P=1:400-800IHC-F=1:400-800ICC=1:100-500IF=1:100-500 (Paraffin sections need antigen repair) not yet tested in other applications. optimal dilutions/concentrations should be determined by the end user.
<b>Molecular weight:</b>	52kDa
<b>Cellular localization:</b>	The nucleuscytoplasmic
<b>Form:</b>	Lyophilized or Liquid
<b>Concentration:</b>	1mg/ml
<b>immunogen:</b>	KLH conjugated synthetic peptide derived from human CELF3:401-465/465
<b>Lsotype:</b>	IgG
<b>Purification:</b>	affinity purified by Protein A
<b>Storage Buffer:</b>	0.01M TBS(pH7.4) with 1% BSA, 0.03% Proclin300 and 50% Glycerol.
<b>Storage:</b>	Store at -20 °C for one year. Avoid repeated freeze/thaw cycles. The lyophilized antibody is stable at room temperature for at least one month and for greater than a year when kept at -20°C. When reconstituted in sterile pH 7.4 0.01M PBS or diluent of antibody the antibody is stable for at least two weeks at 2-4 °C.
<b>PubMed:</b>	<a href="#">PubMed</a>
<b>Product Detail:</b>	Members of the CELF/BRUNOL protein family contain two N-terminal RNA recognition motif (RRM) domains, one C-terminal RRM domain, and a divergent segment of 160-230 aa between the second and third RRM domains. Members of this

protein family regulate pre-mRNA alternative splicing and may also be involved in mRNA editing, and translation. Multiple alternatively spliced transcript variants encoding different isoforms have been identified in this gene. [provided by RefSeq, Feb 2010]

**Function:**

RNA-binding protein involved in the regulation of pre-mRNA alternative splicing. Mediates exon inclusion and/or exclusion in pre-mRNA that are subject to tissue-specific and developmentally regulated alternative splicing. Specifically activates exon 5 inclusion of cardiac isoforms of TNNT2 during heart remodeling at the juvenile to adult transition. Binds to muscle-specific splicing enhancer (MSE) intronic sites flanking the alternative exon 5 of TNNT2 pre-mRNA.

**Subcellular Location:**

Nucleus. Cytoplasm.

**Tissue Specificity:**

Expressed in brain.

**Similarity:**

Belongs to the CELF/BRUNOL family.  
Contains 3 RRM (RNA recognition motif) domains.

**SWISS:**

Q5SZQ8

**Gene ID:**

11189

**Database links:**

[Entrez Gene: 11189](#) Human

[Omid: 612678](#) Human

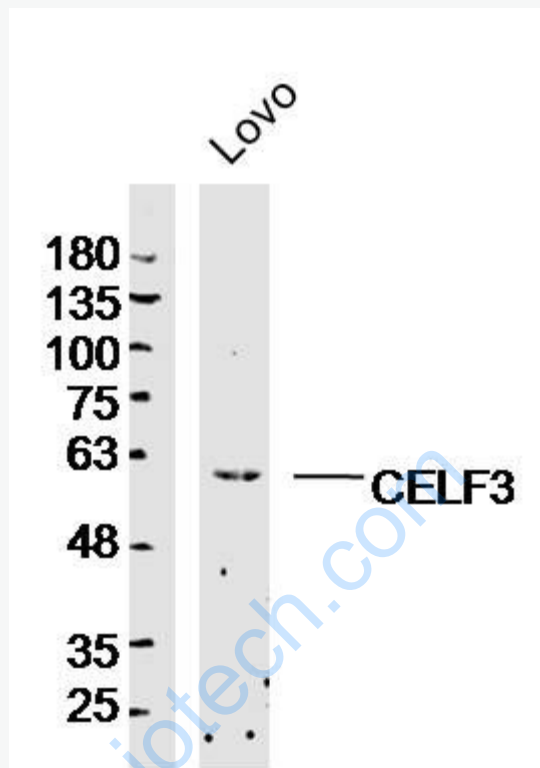
[SwissProt: Q5SZQ8](#) Human

[Unigene: 26047](#) Human

**Important Note:**

This product as supplied is intended for research use only, not for use in human, therapeutic or diagnostic applications.

Picture:



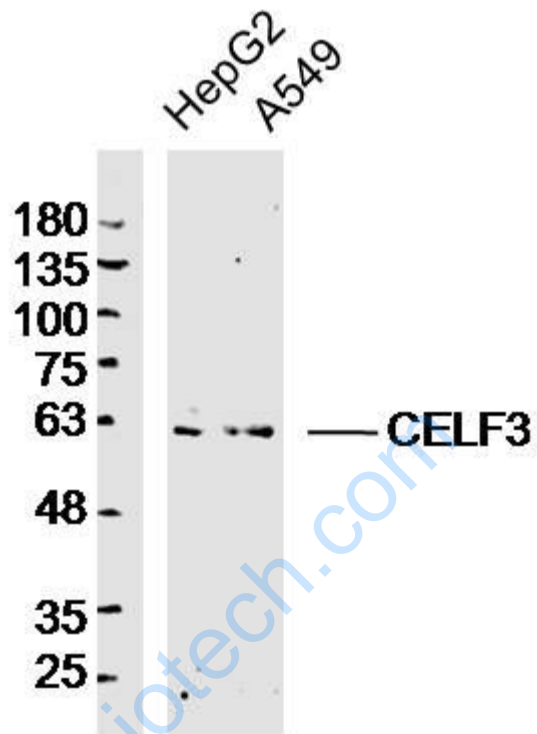
Sample: Lovo (human)cell Lysate at 40 ug

Primary: Anti- CELF3(SL13830R)at 1/300 dilution

Secondary: IRDye800CW Goat Anti-Rabbit IgG at 1/20000 dilution

Predicted band size: 52kD

Observed band size: 57kD



Sample:

HepG2 (human)cell Lysate at 40 ug

A549 (human)cell Lysate at 40 ug

Primary: Anti- CELF3(SL13830R)at 1/300 dilution

Secondary: IRDye800CW Goat Anti-Rabbit IgG at 1/20000 dilution

Predicted band size: 52kD

Observed band size: 57kD