



Rabbit Anti-Centrin-1+Centrin-2 antibody

SL13848R

Product Name:	Centrin-1+Centrin-2
Chinese Name:	中心体蛋白1+2抗体
Alias:	Caltractin; Caltractin isoform 2; CEN 1; CEN1; Centrin EF hand protein 1; Centrin-1; Centrin1; CETN 1; CETN; CETN1; CETN1_HUMAN; EF hand protein 1; 20kD calcium binding protein; CALT; caltractin; Caltractin isoform 1; CEN2; centrin; centrin, EF hand protein, 2; Centrin-2; Centrin2; CETN2; CETN2_HUMAN; EF hand protein 2; EF-hand protein.
Organism Species:	Rabbit
Clonality:	Polyclonal
React Species:	Human,Mouse,Rat,Cow,
Applications:	ELISA=1:500-1000IHC-P=1:400-800IHC-F=1:400-800ICC=1:100-500IF=1:100-500 (Paraffin sections need antigen repair) not yet tested in other applications. optimal dilutions/concentrations should be determined by the end user.
Molecular weight:	20kDa
Cellular localization:	cytoplasmic
Form:	Lyophilized or Liquid
Concentration:	1mg/ml
immunogen:	KLH conjugated synthetic peptide derived from human Centrin 1:101-172/172
Lsotype:	IgG
Purification:	affinity purified by Protein A
Storage Buffer:	0.01M TBS(pH7.4) with 1% BSA, 0.03% Proclin300 and 50% Glycerol.
Storage:	Store at -20 °C for one year. Avoid repeated freeze/thaw cycles. The lyophilized antibody is stable at room temperature for at least one month and for greater than a year when kept at -20°C. When reconstituted in sterile pH 7.4 0.01M PBS or diluent of antibody the antibody is stable for at least two weeks at 2-4 °C.
PubMed:	PubMed
Product Detail:	The protein encoded by this gene plays important roles in the determination of centrosome position and segregation, and in the process of microtubule severing. This encoded protein is localized to the centrosome of interphase cells, and redistributes to

the region of the spindle poles during mitosis, reflecting the dynamic behavior of the centrosome during the cell cycle. [provided by RefSeq, Jul 2008]

Function:

Plays a fundamental role in microtubule-organizing center structure and function.

Subcellular Location:

Cytoplasm, cytoskeleton, centrosome. Centrosome of interphase and mitotic cells.

Similarity:

Belongs to the centrin family.

Contains 4 EF-hand domains.

SWISS:

Q12798

Gene ID:

1068

1069

Database links:

[Entrez Gene: 1068](#) Human

[Entrez Gene: 512850](#) Cow

[Omim: 603187](#) Human

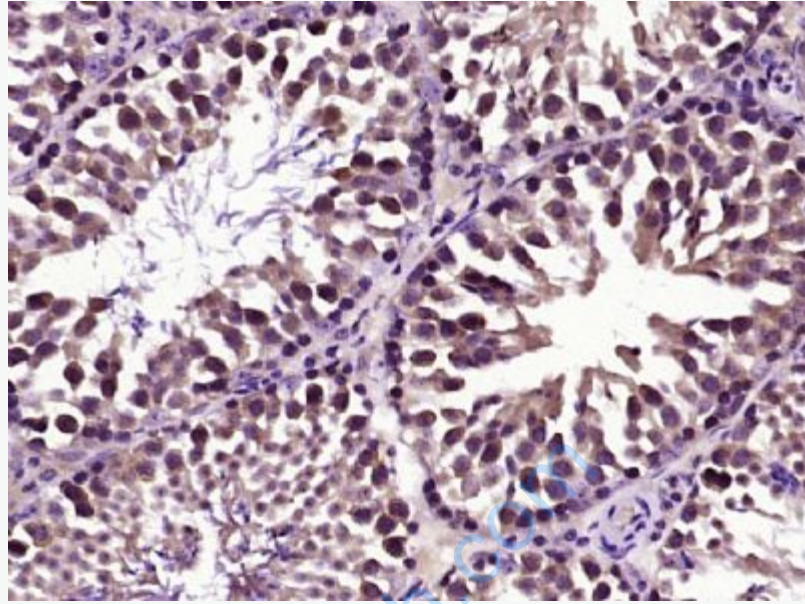
[SwissProt: Q32LE3](#) Cow

[SwissProt: Q12798](#) Human

[Unigene: 122511](#) Human

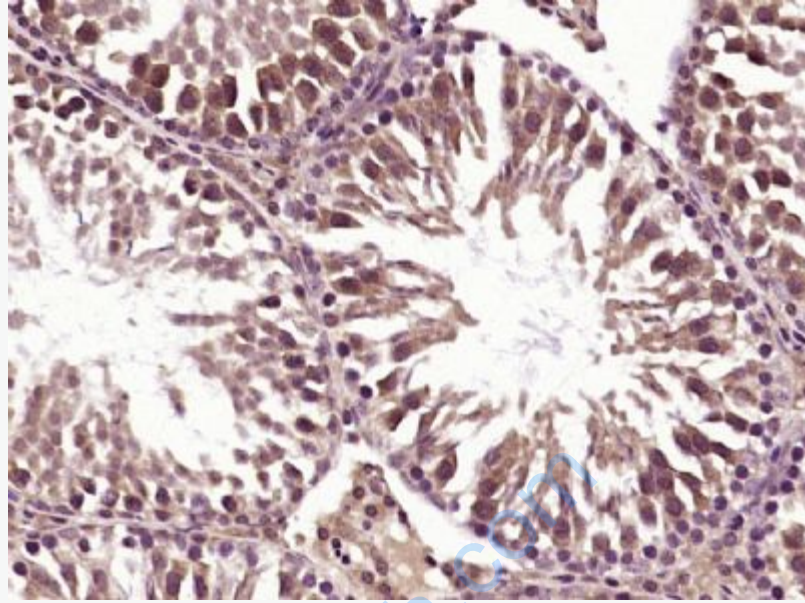
Important Note:

This product as supplied is intended for research use only, not for use in human, therapeutic or diagnostic applications.



Picture:

Paraformaldehyde-fixed, paraffin embedded (mouse ovary tissue); Antigen retrieval by boiling in sodium citrate buffer (pH6.0) for 15min; Block endogenous peroxidase by 3% hydrogen peroxide for 20 minutes; Blocking buffer (normal goat serum) at 37°C for 30min; Antibody incubation with (Centrin-1+Centrin-2) Polyclonal Antibody, Unconjugated (SL13848R) at 1:400 overnight at 4°C, followed by operating according to SP Kit(Rabbit) (sp-0023) instructions and DAB staining.



Paraformaldehyde-fixed, paraffin embedded (rat ovary tissue); Antigen retrieval by boiling in sodium citrate buffer (pH6.0) for 15min; Block endogenous peroxidase by 3% hydrogen peroxide for 20 minutes; Blocking buffer (normal goat serum) at 37°C for 30min; Antibody incubation with (Centrin-1+Centrin-2) Polyclonal Antibody, Unconjugated (SL13848R) at 1:400 overnight at 4°C, followed by operating according to SP Kit(Rabbit) (sp-0023) instructions and DAB staining.