



## Rabbit Anti-CEP192 antibody

SL13856R

<b>Product Name:</b>	CEP192
<b>Chinese Name:</b>	中心体蛋白192抗体
<b>Alias:</b>	Centrosomal protein 192kDa; Centrosomal protein of 192 kDa; Cep192; KIAA1569; PP8407; PPP1R62; CE192 HUMAN; Protein phosphatase 1, regulatory subunit 62.
<b>Organism Species:</b>	Rabbit
<b>Clonality:</b>	Polyclonal
<b>React Species:</b>	Human,Mouse,
<b>Applications:</b>	WB=1:500-2000ELISA=1:500-1000IHC-P=1:400-800IHC-F=1:400-800ICC=1:100-500IF=1:100-500 (Paraffin sections need antigen repair) not yet tested in other applications. optimal dilutions/concentrations should be determined by the end user.
<b>Molecular weight:</b>	213kDa
<b>Cellular localization:</b>	The nucleus
<b>Form:</b>	Lyophilized or Liquid
<b>Concentration:</b>	1mg/ml
<b>immunogen:</b>	KLH conjugated synthetic peptide derived from human CEP192:51-150/1941
<b>Lsotype:</b>	IgG
<b>Purification:</b>	affinity purified by Protein A
<b>Storage Buffer:</b>	0.01M TBS(pH7.4) with 1% BSA, 0.03% Proclin300 and 50% Glycerol.
<b>Storage:</b>	Store at -20 °C for one year. Avoid repeated freeze/thaw cycles. The lyophilized antibody is stable at room temperature for at least one month and for greater than a year when kept at -20°C. When reconstituted in sterile pH 7.4 0.01M PBS or diluent of antibody the antibody is stable for at least two weeks at 2-4 °C.
<b>PubMed:</b>	<a href="#">PubMed</a>
<b>Product Detail:</b>	Required for mitotic centrosome and spindle assembly. Appears to be a major regulator of pericentriolar material (PCM) recruitment, centrosome maturation, and centriole duplication.  <b>Subcellular Location:</b> Required for mitotic centrosome and spindle assembly. Appears to be a major regulator

of pericentriolar material (PCM) recruitment, centrosome maturation, and centriole duplication.

**Post-translational modifications:**

Hydroxylation by PHD1/EGLN2 at Pro-1717 promotes ubiquitination.

Ubiquitinated by a SCF(SKP2) complex following proline hydroxylation.

**SWISS:**

Q8TEP8

**Gene ID:**

55125

**Database links:**

[Entrez Gene: 55125](#) Human

[SwissProt: Q8TEP8](#) Human

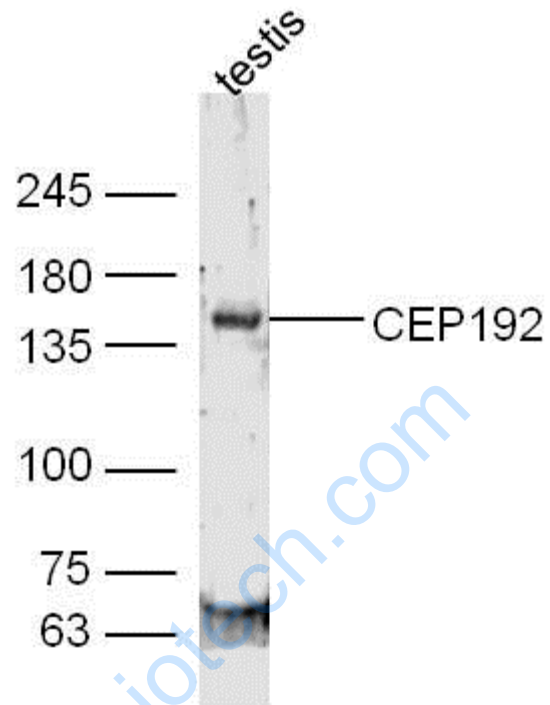
[Unigene: 100914](#) Human

**Important Note:**

This product as supplied is intended for research use only, not for use in human, therapeutic or diagnostic applications.

www.sunlongbiotech.com

Picture:



Sample:

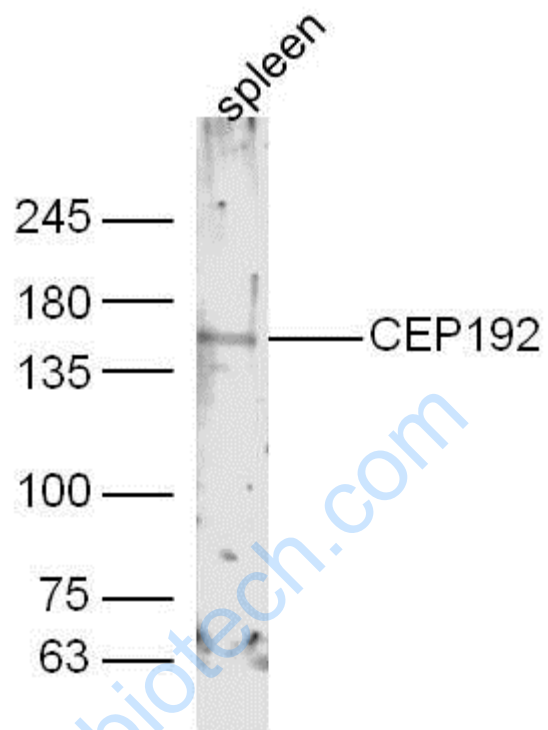
Testis (Mouse) Lysate at 40 ug

Primary: Anti-CEP192 (SL13856R) at 1/300 dilution

Secondary: IRDye800CW Goat Anti-Rabbit IgG at 1/20000 dilution

Predicted band size: 213 kD

Observed band size: 150 kD



Sample:

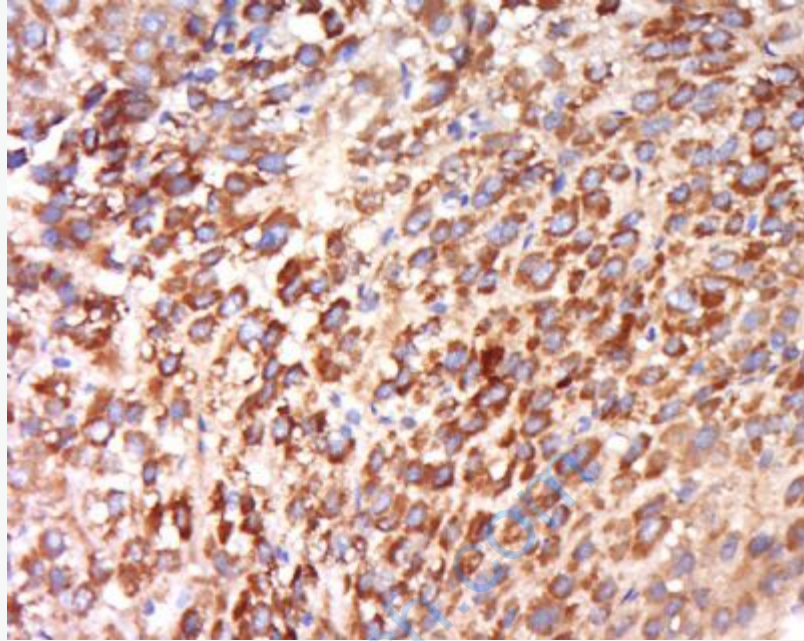
Spleen (Mouse) Lysate at 40 ug

Primary: Anti-CEP192 (SL13856R) at 1/300 dilution

Secondary: IRDye800CW Goat Anti-Rabbit IgG at 1/20000 dilution

Predicted band size: 213 kD

Observed band size: 150 kD



Tissue/cell: human liver cancer; 4% Paraformaldehyde-fixed and paraffin-embedded;

Antigen retrieval: citrate buffer ( 0.01M, pH 6.0 ), Boiling bathing for 15min; Block endogenous peroxidase by 3% Hydrogen peroxide for 30min; Blocking buffer (normal goat serum,C-0005) at 37°C for 20 min;

Incubation: Anti-CEP192 Polyclonal Antibody, Unconjugated(SL13856R) 1:500, overnight at 4°C, followed by conjugation to the secondary antibody(SP-0023) and DAB(C-0010) staining