



## Rabbit Anti-CES6 antibody

SL13871R

<b>Product Name:</b>	CES6
<b>Chinese Name:</b>	羧酸酯酶6抗体
<b>Alias:</b>	Carboxylesterase 6; Carboxylesterase6; CES6; EST2A_MOUSE.
<b>Organism Species:</b>	Rabbit
<b>Clonality:</b>	Polyclonal
<b>React Species:</b>	Mouse,Rat,
<b>Applications:</b>	WB=1:500-2000ELISA=1:500-1000IHC-P=1:400-800IHC-F=1:400-800ICC=1:100-500IF=1:100-500 (Paraffin sections need antigen repair) not yet tested in other applications. optimal dilutions/concentrations should be determined by the end user.
<b>Molecular weight:</b>	59kDa
<b>Cellular localization:</b>	cytoplasmic
<b>Form:</b>	Lyophilized or Liquid
<b>Concentration:</b>	1mg/ml
<b>immunogen:</b>	KLH conjugated synthetic peptide derived from mouse CES6:481-558/558
<b>Lsotype:</b>	IgG
<b>Purification:</b>	affinity purified by Protein A
<b>Storage Buffer:</b>	0.01M TBS(pH7.4) with 1% BSA, 0.03% Proclin300 and 50% Glycerol.
<b>Storage:</b>	Store at -20 °C for one year. Avoid repeated freeze/thaw cycles. The lyophilized antibody is stable at room temperature for at least one month and for greater than a year when kept at -20°C. When reconstituted in sterile pH 7.4 0.01M PBS or diluent of antibody the antibody is stable for at least two weeks at 2-4 °C.
<b>PubMed:</b>	<a href="#">PubMed</a>
<b>Product Detail:</b>	<p>CES6 (Carboxylesterase 6) is a member of the carboxylesterases family. Carboxylesterases are enzymes that catalyze the hydrolysis of a wide range of ester-containing endogenous and xenobiotic compounds.</p> <p><b>Function:</b> Carboxylesterases that catalyzes the hydrolysis of pyrethroids pesticides. Hydrolyzes permethrin faster than cypermethrin.</p>

**Similarity:**

Belongs to the type-B carboxylesterase/lipase family.

**SWISS:**

Q8QZR3

**Gene ID:**

102022

**Database links:**

[Entrez Gene: 102022](#) Mouse

[Entrez Gene: 246252](#) Rat

[SwissProt: Q8QZR3](#) Mouse

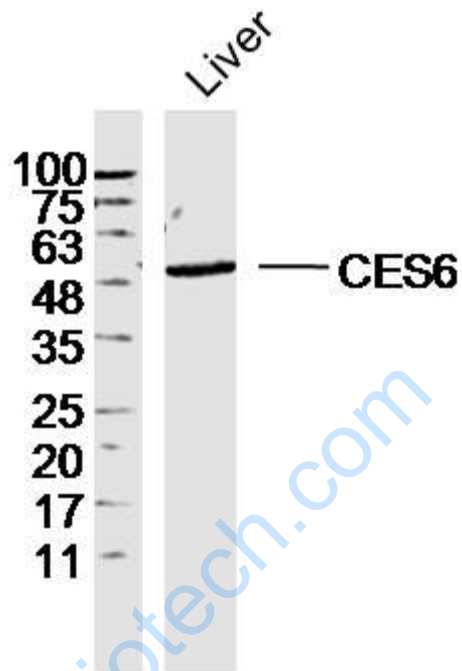
[Unigene: 212983](#) Mouse

**Important Note:**

This product as supplied is intended for research use only, not for use in human, therapeutic or diagnostic applications.

羧酸酯酶主要位于肝、其他组织及细胞胞液、Mitochondrion和内质网。  
是一种多聚蛋白，主要催化酯、硫酸酯和酰胺的水解。

Picture:



Sample: Liver (Mouse) Lysate at 40 ug

Primary: Anti-CES6 (SL13871R) at 1/300 dilution

Secondary: IRDye800CW Goat Anti-Rabbit IgG at 1/20000 dilution

Predicted band size: 59 kD

Observed band size: 59 kD