



Rabbit Anti-LC3A/B + LC3B + LC3C antibody

SL13891R

Product Name:	LC3A/B + LC3B + LC3C
Chinese Name:	自噬微管相关蛋白轻链3抗体
Alias:	LC3; MAP1A; LC3 alpha; MAP1LC3A; MAP1a + MAP1b; microtubule-associated protein 1 light chain 3; Autophagy LC3; Microtubule-associated proteins 1A/1B light chain 3A; MAPLC3; MAP-LC3; Microtubule-associated protein 1 light chain 3 alpha; MAP1A/1B light chain 3 A; MAP1A/MAP1B LC3 A; Autophagy-related protein LC3 A; Autophagy-related ubiquitin-like modifier LC3 A; MAP1 light chain 3-like protein 1; MAP1A_HUMAN. Microtubule-associated protein 1 light chain 3 beta; ATG8F; Autophagy related protein LC3 B; Autophagy related ubiquitin like modifier LC3 B; Autophagy-related protein LC3 B; Autophagy-related ubiquitin-like modifier LC3 B; MAP1 light chain 3 like protein 2; MAP1 light chain 3-like protein 2; MAP1A/1B light chain 3 B; MAP1A/1BLC3; MAP1A/MAP1B LC3 B; MAP1A/MAP1B light chain 3 B; MAP1ALC3; MAP1LC3B; Microtubule associated protein 1 light chain 3 beta; Microtubule associated proteins 1A/1B light chain 3B; Microtubule-associated protein 1 light chain 3 beta; Microtubule-associated proteins 1A/1B light chain 3B; MLP3B_HUMAN. LC3 like protein 2; MAP1 light chain 3 like protein 3; Microtubule-associated proteins 1A/1B light chain 3C; Autophagy-related protein LC3 C; Autophagy-related ubiquitin-like modifier LC3 C; MAP1 light chain 3-like protein 3; MAP1A/MAP1B light chain 3 C; MAP1A/MAP1B LC3 C; Microtubule-associated protein 1 light chain 3 gamma; MAP1LC3C; MLP3C HUMAN.
Organism Species:	Rabbit
Clonality:	Polyclonal
React Species:	Human,Mouse,Rat,Chicken,Dog,Pig,Cow,Horse,Rabbit,
Applications:	ELISA=1:500-1000IHC-P=1:400-800IHC-F=1:400-800ICC=1:100-500IF=1:100-500 (Paraffin sections need antigen repair) not yet tested in other applications. optimal dilutions/concentrations should be determined by the end user.
Molecular weight:	12-14kDa

Cellular localization:	cytoplasmic
Form:	Lyophilized or Liquid
Concentration:	1mg/ml
immunogen:	KLH conjugated synthetic peptide derived from human LC3A/B + LC3B + LC3C:21-100/121
Lsotype:	IgG
Purification:	affinity purified by Protein A
Storage Buffer:	Preservative: 15mM Sodium Azide, Constituents: 1% BSA, 0.01M PBS, pH 7.4
Storage:	Store at -20 °C for one year. Avoid repeated freeze/thaw cycles. The lyophilized antibody is stable at room temperature for at least one month and for greater than a year when kept at -20°C. When reconstituted in sterile pH 7.4 0.01M PBS or diluent of antibody the antibody is stable for at least two weeks at 2-4 °C.
PubMed:	PubMed
Product Detail:	<p>MAP1A and MAP1B are microtubule-associated proteins which mediate the physical interactions between microtubules and components of the cytoskeleton. MAP1A and MAP1B each consist of a heavy chain subunit and multiple light chain subunits. The protein encoded by this gene is one of the light chain subunits and can associate with either MAP1A or MAP1B. Two transcript variants encoding different isoforms have been found for this gene. The expression of variant 1 is suppressed in many tumor cell lines, suggesting that may be involved in carcinogenesis. [provided by RefSeq, Feb 2012].</p> <p>Autophagy is a highly regulated bulk degradation process that plays an important role in cellular maintenance and development. MAP1LC3C is an ortholog of the yeast autophagosome protein Atg8 (He et al., 2003 [PubMed 12740394]).[supplied by OMIM, Nov 2010].</p> <p>Function: Probably involved in formation of autophagosomal vacuoles (autophagosomes).</p> <p>Subunit: 3 different light chains, LC1, LC2 and LC3, can associate with MAP1A and MAP1B proteins. Interacts with SQSTM1. Interacts with TP53INP1 and TP53INP2.</p> <p>Subcellular Location: Cytoplasm, cytoskeleton. Endomembrane system; Lipid-anchor. Cytoplasmic vesicle, autophagosome membrane; Lipid-anchor. Cytoplasmic vesicle, autophagosome. Note=LC3-II binds to the autophagic membranes.</p> <p>Tissue Specificity: Most abundant in heart, brain, liver, skeletal muscle and testis but absent in thymus and peripheral blood leukocytes.</p> <p>Post-translational modifications: The precursor molecule is cleaved by APG4B/ATG4B to form the cytosolic form, LC3-I. This is activated by APG7L/ATG7, transferred to ATG3 and conjugated to phospholipid to form the membrane-bound form, LC3-II.</p>

Similarity:

Detects a band of approximately 16 kDa (predicted molecular weight: 14 kDa).

SWISS:

P78559

Gene ID:

4130

Database links:

[Entrez Gene: 4130](#)Human

[Entrez Gene: 440738](#)Human

[Entrez Gene: 81631](#)Human

[Entrez Gene: 17754](#)Mouse

[Entrez Gene: 67443](#)Mouse

[Entrez Gene: 25152](#)Rat

[Entrez Gene: 64862](#)Rat

[Olim: 600178](#)Human

[Olim: 609605](#)Human

[SwissProt: P78559](#)Human

[SwissProt: Q9BXW4](#)Human

[SwissProt: Q9QYR6](#)Mouse

[SwissProt: P34926](#)Rat

[Unigene: 194301](#)Human

[Unigene: 619338](#)Human

[Unigene: 534971](#)Human

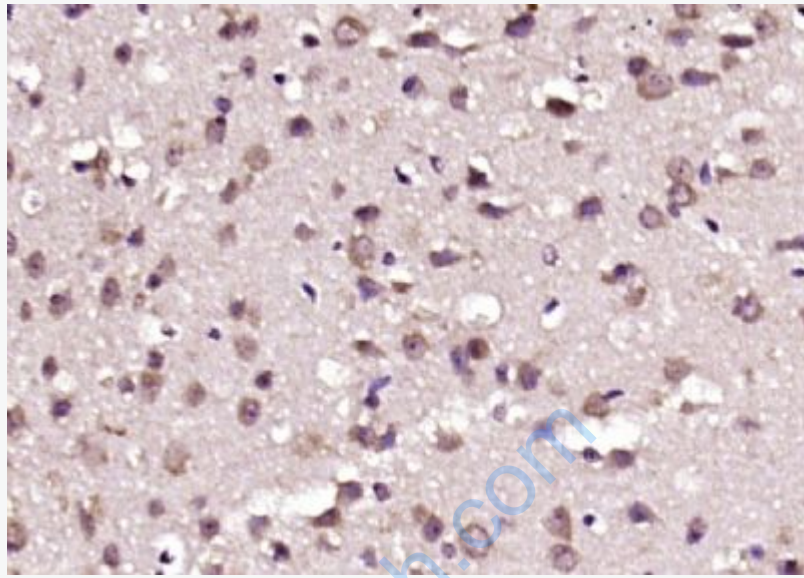
[Unigene: 36501](#)Mouse

[Unigene: 11402](#)Rat

[Unigene: 41412](#)Rat

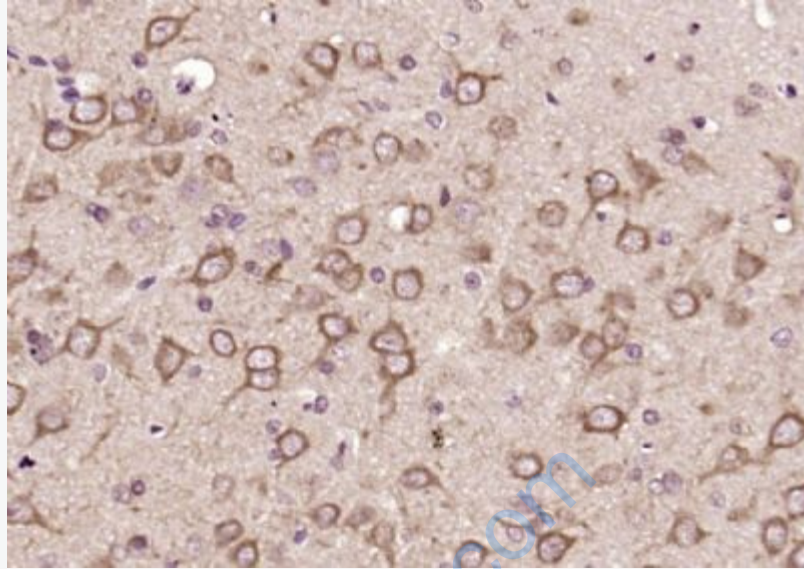
Important Note:

This product as supplied is intended for research use only, not for use in human, therapeutic or diagnostic applications.



Picture:

Paraformaldehyde-fixed, paraffin embedded (mouse brain); Antigen retrieval by boiling in sodium citrate buffer (pH6.0) for 15min; Block endogenous peroxidase by 3% hydrogen peroxide for 20 minutes; Blocking buffer (normal goat serum) at 37°C for 30min; Antibody incubation with (LC3A,B + LC3B + LC3C) Polyclonal Antibody, Unconjugated (SL13891R) at 1:200 overnight at 4°C, followed by operating according to SP Kit(Rabbit) (sp-0023) instructions and DAB staining.



Paraformaldehyde-fixed, paraffin embedded (rat brain); Antigen retrieval by boiling in sodium citrate buffer (pH6.0) for 15min; Block endogenous peroxidase by 3% hydrogen peroxide for 20 minutes; Blocking buffer (normal goat serum) at 37°C for 30min; Antibody incubation with (LC3A,B + LC3B + LC3C) Polyclonal Antibody, Unconjugated (SL13891R) at 1:200 overnight at 4°C, followed by operating according to SP Kit(Rabbit) (sp-0023) instructions and DAB staining.