



## Rabbit Anti-CHD2 antibody

SL13892R

<b>Product Name:</b>	CHD2
<b>Chinese Name:</b>	染色质解旋酶DNABinding protein2抗体
<b>Alias:</b>	2810013C04Rik; 2810040A01Rik; 5630401D06Rik; AI851092; ATP dependent helicase CHD2; ATP-dependent helicase CHD2; BC029703; CHD 2; CHD-2; CHD2; CHD2_HUMAN; chromodomain helicase dna binding protein; Chromodomain-helicase-DNA-binding protein 2; DKFZp547I1315; DKFZp686E01200; DKFZP781D1727; EC 3.6.1.-; FLJ38614.
<b>Organism Species:</b>	Rabbit
<b>Clonality:</b>	Polyclonal
<b>React Species:</b>	Human,Mouse,Rat,Chicken,Dog,Pig,Cow,Horse,Zebrafish,Sheep,
<b>Applications:</b>	WB=1:500-2000ELISA=1:500-1000IHC-P=1:400-800IHC-F=1:400-800ICC=1:100-500IF=1:100-500 (Paraffin sections need antigen repair) not yet tested in other applications. optimal dilutions/concentrations should be determined by the end user.
<b>Molecular weight:</b>	57kDa
<b>Cellular localization:</b>	The nucleus
<b>Form:</b>	Lyophilized or Liquid
<b>Concentration:</b>	1mg/ml
<b>immunogen:</b>	KLH conjugated synthetic peptide derived from human CHD2:1751-1828/1828
<b>Lsotype:</b>	IgG
<b>Purification:</b>	affinity purified by Protein A
<b>Storage Buffer:</b>	0.01M TBS(pH7.4) with 1% BSA, 0.03% Proclin300 and 50% Glycerol.
<b>Storage:</b>	Store at -20 °C for one year. Avoid repeated freeze/thaw cycles. The lyophilized antibody is stable at room temperature for at least one month and for greater than a year when kept at -20°C. When reconstituted in sterile pH 7.4 0.01M PBS or diluent of antibody the antibody is stable for at least two weeks at 2-4 °C.
<b>PubMed:</b>	<a href="#">PubMed</a>
<b>Product Detail:</b>	The CHD family of proteins is characterized by the presence of chromo (chromatin organization modifier) domains and SNF2-related helicase/ATPase domains. CHD genes alter gene expression possibly by modification of chromatin structure thus altering

access of the transcriptional apparatus to its chromosomal DNA template. Alternatively spliced transcript variants encoding distinct isoforms have been found for this gene. [provided by RefSeq, Jul 2008]

**Function:**

Sequence-selective DNA-binding protein.

**Subcellular Location:**

Nucleus.

**Similarity:**

Belongs to the SNF2/RAD54 helicase family.

Contains 2 chromo domains.

Contains 1 helicase ATP-binding domain.

Contains 1 helicase C-terminal domain.

**SWISS:**

O14647

**Gene ID:**

1106

**Database links:**

[Entrez Gene: 1106](#) Human

[Entrez Gene: 244059](#) Mouse

[Entrez Gene: 308738](#) Rat

[Omim: 602119](#) Human

[SwissProt: O14647](#) Human

[Unigene: 220864](#) Human

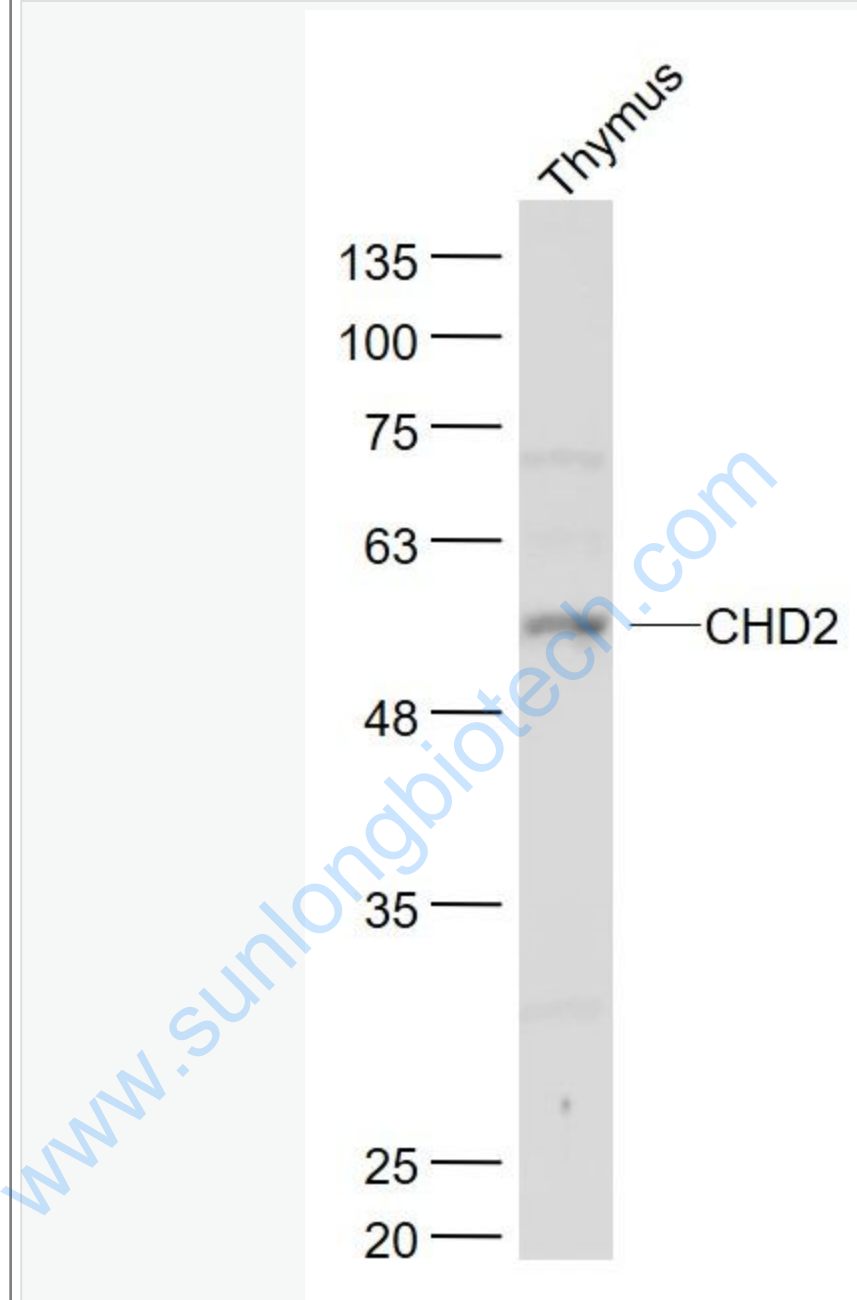
[Unigene: 34955](#) Mouse

[Unigene: 225034](#) Rat

**Important Note:**

This product as supplied is intended for research use only, not for use in human, therapeutic or diagnostic applications.

Picture:



Sample:

Thymus (Mouse) Lysate at 40 ug

Primary: Anti- CHD2 (SL13892R) at 1/1000 dilution

Secondary: IRDye800CW Goat Anti-Rabbit IgG at 1/20000 dilution

Predicted band size: 57 kD

	Observed band size: 57 kD
--	---------------------------

[www.sunlongbiotech.com](http://www.sunlongbiotech.com)