



Rabbit Anti-Cyclin G antibody

SL1389R

| | |
|-------------------------------|--|
| Product Name: | Cyclin G |
| Chinese Name: | 周期素G抗体 |
| Alias: | CCNG 1; CCNG; CCNG1; CYCG1; Cyclin G; CCNG1_HUMAN; Cyclin-G; Cyclin G1; CyclinG1; Cyclin-G1. |
| Organism Species: | Rabbit |
| Clonality: | Polyclonal |
| React Species: | Human,Mouse,Rat,Chicken,Dog,Pig,Cow,Horse,Rabbit, |
| Applications: | WB=1:500-2000ELISA=1:500-1000IHC-P=1:400-800IHC-F=1:400-800IF=1:100-500 (Paraffin sections need antigen repair) not yet tested in other applications. optimal dilutions/concentrations should be determined by the end user. |
| Molecular weight: | 34kDa |
| Cellular localization: | The nucleus |
| Form: | Lyophilized or Liquid |
| Concentration: | 1mg/ml |
| immunogen: | KLH conjugated synthetic peptide derived from human Cyclin G:181-295/295 |
| Lsotype: | IgG |
| Purification: | affinity purified by Protein A |
| Storage Buffer: | 0.01M TBS(pH7.4) with 1% BSA, 0.03% Proclin300 and 50% Glycerol. |
| Storage: | Store at -20 °C for one year. Avoid repeated freeze/thaw cycles. The lyophilized antibody is stable at room temperature for at least one month and for greater than a year when kept at -20°C. When reconstituted in sterile pH 7.4 0.01M PBS or diluent of antibody the antibody is stable for at least two weeks at 2-4 °C. |
| PubMed: | PubMed |
| Product Detail: | Cyclin G contains a typical N terminal cyclin box and a carboxy terminal domain sequence homologous to the tyrosine phosphorylation site of the epidermal growth factor receptor. Cyclin G2 shares 53% amino acid sequence identity with cyclin G1. Peak expression of cyclin G2 is seen in late S phase, as opposed to cyclin G1 expression, which is constitutive. |

Function:

May play a role in growth regulation. Is associated with G2/M phase arrest in response to DNA damage. May be an intermediate by which p53 mediates its role as an inhibitor of cellular proliferation (By similarity).

Subcellular Location:

Nucleus. DNA replication foci after DNA damage.

Tissue Specificity:

High levels in skeletal muscle, ovary, kidney and colon.

Similarity:

Belongs to the cyclin family. Cyclin G subfamily.

SWISS:

P51959

Gene ID:

900

Database links:

[Entrez Gene: 900](#)Human

[Olim: 601578](#)Human

[SwissProt: P51959](#)Human

[Unigene: 79101](#)Human

Important Note:

This product as supplied is intended for research use only, not for use in human, therapeutic or diagnostic applications.

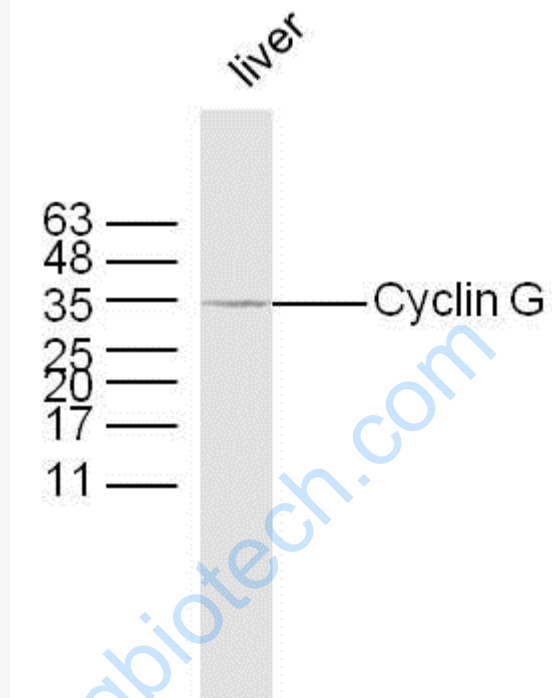
Cyclin

G的生物功能还没有完全清楚,他是Cyclin家族中近来发现的新成员,也是已知的唯一受到Tumour抑制基因p53调控的Cyclin。

近年来经研究发现, Cyclin

G可能有促进细胞增长的作用,在细胞增殖和神经再生中的可能起到一定的作用。

Picture:



Sample:

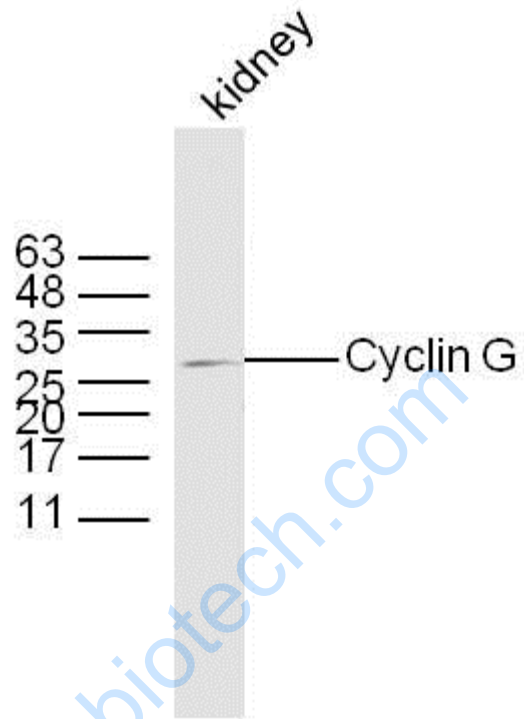
Liver (Mouse) Lysate at 40 ug

Primary: Anti-Cyclin G (SL1389R) at 1/300 dilution

Secondary: IRDye800CW Goat Anti-Rabbit IgG at 1/20000 dilution

Predicted band size: 34 kD

Observed band size: 34/30 kD



Sample:

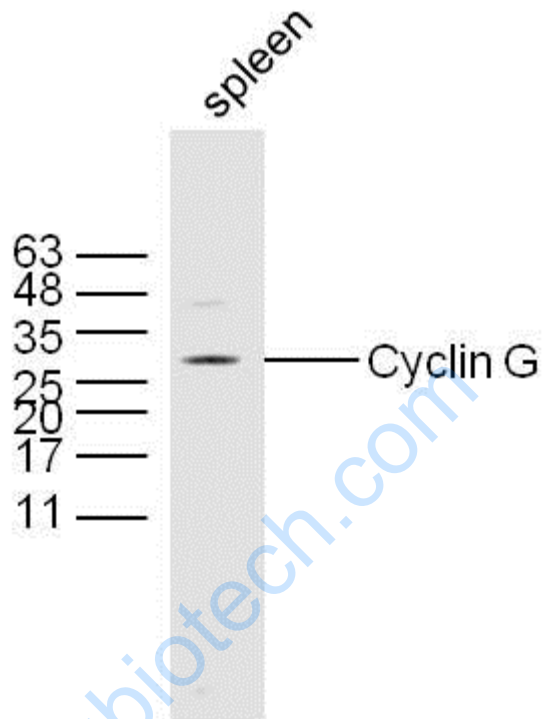
Kidney (Mouse) Lysate at 40 ug

Primary: Anti-Cyclin G (SL1389R) at 1/300 dilution

Secondary: IRDye800CW Goat Anti-Rabbit IgG at 1/20000 dilution

Predicted band size: 34 kD

Observed band size: 34/30 kD



Sample:

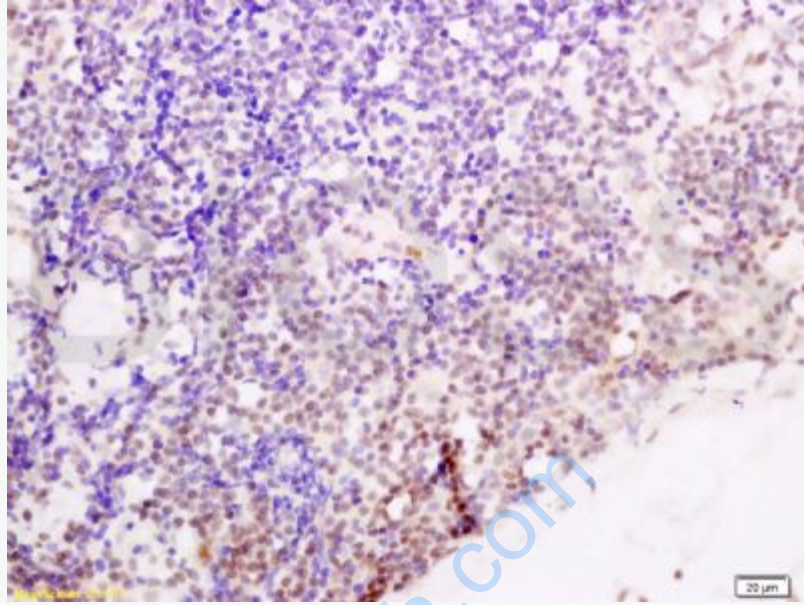
Spleen (Mouse) Lysate at 40 ug

Primary: Anti-Cyclin G (SL1389R) at 1/300 dilution

Secondary: IRDye800CW Goat Anti-Rabbit IgG at 1/20000 dilution

Predicted band size: 34 kD

Observed band size: 34/30 kD



Tissue/cell: human endometrium carcinoma; 4% Paraformaldehyde-fixed and paraffin-embedded;

Antigen retrieval: citrate buffer (0.01M, pH 6.0), Boiling bathing for 15min; Block endogenous peroxidase by 3% Hydrogen peroxide for 30min; Blocking buffer (normal goat serum,C-0005) at 37°C for 20 min;

Incubation: Anti-Cyclin G Polyclonal Antibody, Unconjugated(SL1389R) 1:200, overnight at 4°C, followed by conjugation to the secondary antibody(SP-0023) and DAB(C-0010) staining