



Rabbit Anti-Phospho-CRMP2 (Thr509) antibody

SL14064R

Product Name:	Phospho-CRMP2 (Thr509)
Chinese Name:	磷酸化二氢嘧啶酶样2抗体
Alias:	CRMP2 (phospho T509); p=CRMP2 (phospho T509); CRMP2 (phospho T509);CRMP-2(phospho Thr509);p-CRMP2(Thr509);Collapsin response mediator protein 2; Collapsin response mediator protein hCRMP 2; CRAM; CRMP 2; CRMP-2; CRMP2; DHPRP 2; DHPRP2; Dihydr pyrimidinase 2; Dihydropyrimidinase 2; Dihydropyrimidinase like 2; Dihydropyrimidinase like 2 long form; Dihydropyrimidinase related protein 2; Dihydropyrimidinase-related protein 2; DPYL 2; DPYL2; DPYL3_HUMAN; DPYSL 2; Dpysl2; DRP 2; DRP-2; DRP2; Musunc 33; Musunc33; N2A3; TOAD 64; TOAD64; ULIP 2 protein; ULIP-2; Ulip2; Unc-33-like phosphoprotein 2.
Organism Species:	Rabbit
Clonality:	Polyclonal
React Species:	Human,Mouse,Rat,Chicken,Dog,Pig,Cow,Horse,Rabbit,Sheep,
Applications:	WB=1:500-2000ELISA=1:500-1000IHC-P=1:400-800IHC-F=1:400-800ICC=1:100-500IF=1:100-500 (Paraffin sections need antigen repair) not yet tested in other applications. optimal dilutions/concentrations should be determined by the end user.
Molecular weight:	62kDa
Cellular localization:	cytoplasmic
Form:	Lyophilized or Liquid
Concentration:	1mg/ml
immunogen:	KLH conjugated Synthesised phosphopeptide derived from human CRMP-2 around the phosphorylation site of Thr509:SV(p-T)PK
Lsotype:	IgG
Purification:	affinity purified by Protein A
Storage Buffer:	0.01M TBS(pH7.4) with 1% BSA, 0.03% Proclin300 and 50% Glycerol.
Storage:	Store at -20 °C for one year. Avoid repeated freeze/thaw cycles. The lyophilized antibody is stable at room temperature for at least one month and for greater than a year when kept at -20°C. When reconstituted in sterile pH 7.4 0.01M PBS or diluent of

	antibody the antibody is stable for at least two weeks at 2-4 °C.
PubMed:	PubMed
Product Detail:	<p>Collapsin response mediator proteins (CRMPs) are cytosolic phosphoproteins involved in neuronal differentiation and axonal guidance. CRMP2 was previously shown to mediate the repulsive effect of Sema3A on axons and to participate in axonal specification. The CRMPs appear to play a complex role in axon growth as well as microtubule dynamics and axon induction. CRMPs localize to the lamellipodia and filopodia of axonal growth cones, suggesting a role in axon guidance. Moreover, CRMP2 is upregulated after axotomy, and appears to increase the formation of axon-type processes from hippocampal neurons. CRMP2 has been reported to bind tubulin dimers directly and modulate microtubule assembly. CRMPs have also been implicated in the pathogenesis of a paraneoplastic neurologic syndrome. Interaction studies have implicated phospholipase D2 (PLD2), the cytosolic tyrosine kinase Fes, and intersectin in CRMP function. Hyperphosphorylation of CRMP2 is an early event in the progression of Alzheimer's disease.</p> <p>Function: Necessary for signaling by class 3 semaphorins and subsequent remodeling of the cytoskeleton. Plays a role in axon guidance, neuronal growth cone collapse and cell migration.</p> <p>Subunit: Homotetramer, and heterotetramer with CRMP1, DPYSL3, DPYSL4 or DPYSL5 (By similarity). Interacts through its C-terminus with the C-terminus of CYFIP1/SRA1. Interacts with HTR4 (By similarity). Interacts with CLN6.</p> <p>Subcellular Location: Cytoplasm.</p> <p>Tissue Specificity: Ubiquitous.</p> <p>Post-translational modifications: 3F4, a monoclonal antibody which strongly stains neurofibrillary tangles in Alzheimer disease brains, specifically labels DPYSL2 when phosphorylated on Ser-518, Ser-522 and Thr-509.</p> <p>Similarity: Belongs to the DHOase family. Hydantoinase/dihydropyrimidinase subfamily.</p> <p>SWISS: Q16555</p> <p>Gene ID: 1808</p>

Database links:

[Entrez Gene: 1808](#) Human

[Entrez Gene: 12934](#) Mouse

[Entrez Gene: 25416](#) Rat

[Omim: 602463](#) Human

[SwissProt: Q16555](#) Human

[SwissProt: O08553](#) Mouse

[SwissProt: P47942](#) Rat

[Unigene: 173381](#) Human

[Unigene: 352648](#) Mouse

[Unigene: 475100](#) Mouse

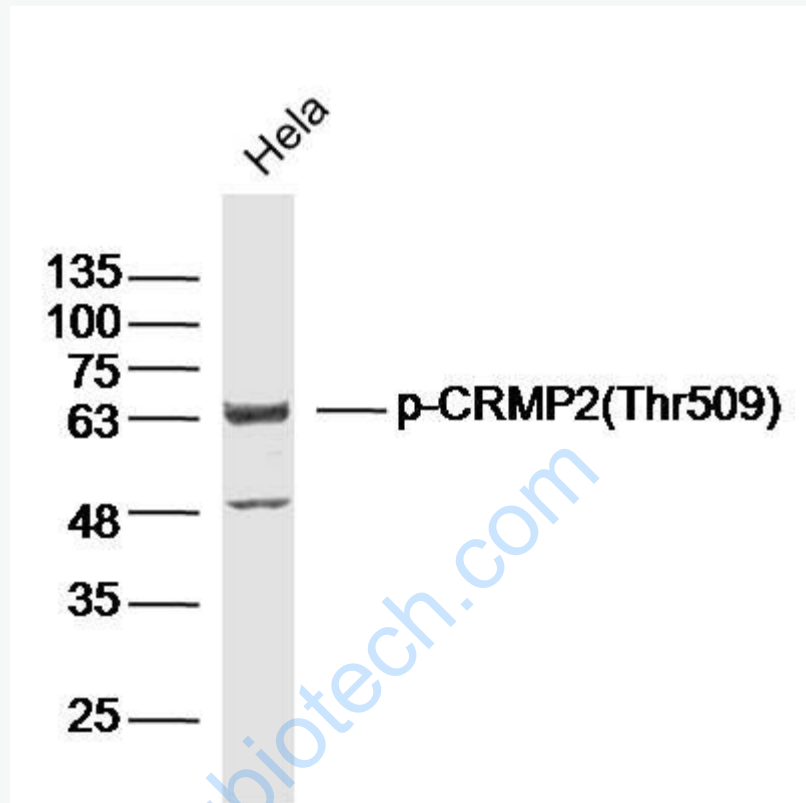
[Unigene: 2889](#) Rat

Important Note:

This product as supplied is intended for research use only, not for use in human, therapeutic or diagnostic applications.

www.suzhongbiotech.com

Picture:



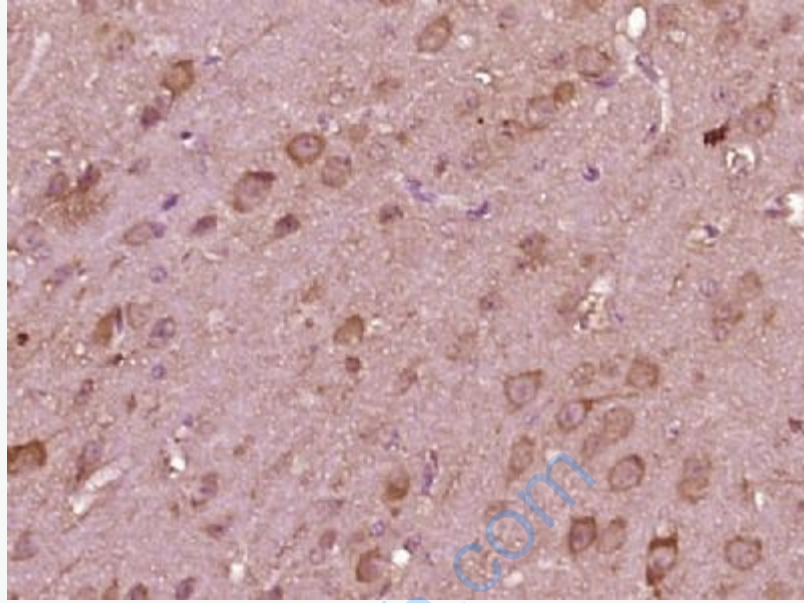
Sample: HeLa Cell(Human)Lysate at 40 ug

Primary: Anti-P-CRMP2 (Thr509)(SL14064R)at 1/300 dilution

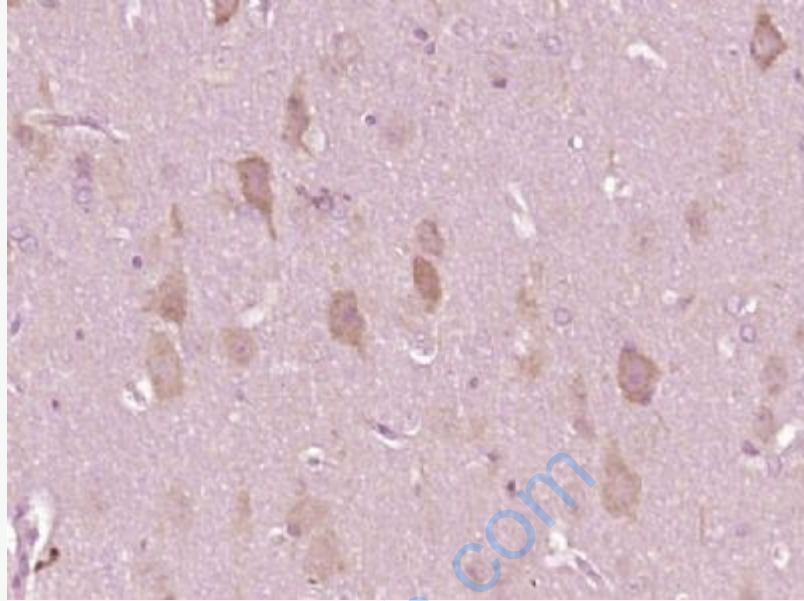
Secondary: IRDye800CW Goat Anti-Rabbit IgG at 1/20000 dilution

Predicted band size: 62kD

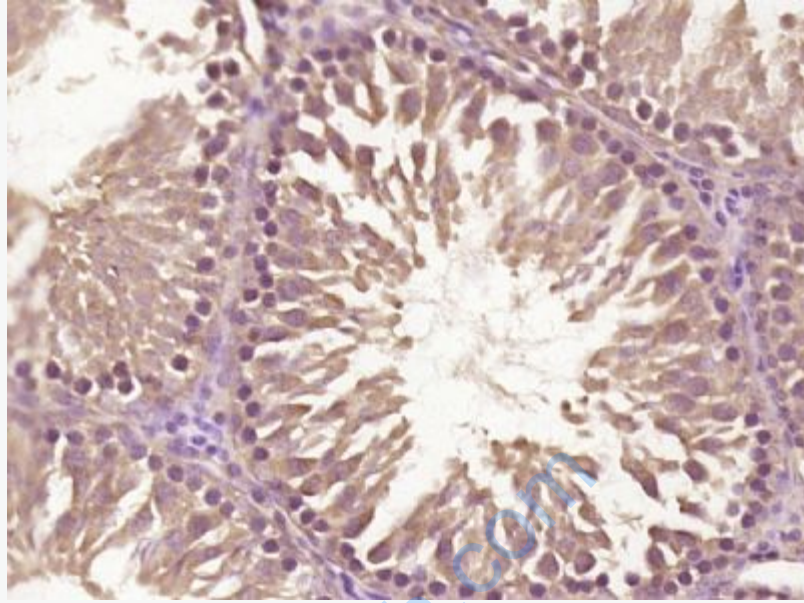
Observed band size: 62kD



Paraformaldehyde-fixed, paraffin embedded (mouse brain tissue); Antigen retrieval by boiling in sodium citrate buffer (pH6.0) for 15min; Block endogenous peroxidase by 3% hydrogen peroxide for 20 minutes; Blocking buffer (normal goat serum) at 37°C for 30min; Antibody incubation with (CRMP2 (Thr509)) Polyclonal Antibody, Unconjugated (SL14064R) at 1:400 overnight at 4°C, followed by operating according to SP Kit(Rabbit) (sp-0023) instructions and DAB staining.



Paraformaldehyde-fixed, paraffin embedded (rat brain tissue); Antigen retrieval by boiling in sodium citrate buffer (pH6.0) for 15min; Block endogenous peroxidase by 3% hydrogen peroxide for 20 minutes; Blocking buffer (normal goat serum) at 37°C for 30min; Antibody incubation with (CRMP2 (Thr509)) Polyclonal Antibody, Unconjugated (SL14064R) at 1:400 overnight at 4°C, followed by operating according to SP Kit(Rabbit) (sp-0023) instructions and DAB staining.



Paraformaldehyde-fixed, paraffin embedded (rat testis tissue); Antigen retrieval by boiling in sodium citrate buffer (pH6.0) for 15min; Block endogenous peroxidase by 3% hydrogen peroxide for 20 minutes; Blocking buffer (normal goat serum) at 37°C for 30min; Antibody incubation with (CRMP2 (Thr509)) Polyclonal Antibody, Unconjugated (SL14064R) at 1:400 overnight at 4°C, followed by operating according to SP Kit(Rabbit) (sp-0023) instructions and DAB staining.