



## Rabbit Anti-phospho-Cyclin C (Ser275) antibody

SL14136R

<b>Product Name:</b>	phospho-Cyclin C (Ser275)
<b>Chinese Name:</b>	磷酸化周期素C抗体
<b>Alias:</b>	Cyclin C (phospho S275); p-Cyclin C (phospho S275); CCNC; CCNC_HUMAN; CycC; Cyclin C; Cyclin-C; CyclinC; hSRB11; OTTHUMP00000016897; SRB11 homolog
<b>Organism Species:</b>	Rabbit
<b>Clonality:</b>	Polyclonal
<b>React Species:</b>	Human,Mouse,Rat,Chicken,Dog,Cow,Horse,Sheep,
<b>Applications:</b>	WB=1:500-2000ELISA=1:500-1000IHC-P=1:400-800IHC-F=1:400-800ICC=1:100-500IF=1:100-500 (Paraffin sections need antigen repair) not yet tested in other applications. optimal dilutions/concentrations should be determined by the end user.
<b>Molecular weight:</b>	33kDa
<b>Cellular localization:</b>	The nucleus
<b>Form:</b>	Lyophilized or Liquid
<b>Concentration:</b>	1mg/ml
<b>immunogen:</b>	KLH conjugated Synthesised phosphopeptide derived from human Cyclin C around the phosphorylation site of Ser275:NG(p-S)QN
<b>Lsotype:</b>	IgG
<b>Purification:</b>	affinity purified by Protein A
<b>Storage Buffer:</b>	0.01M TBS(pH7.4) with 1% BSA, 0.03% Proclin300 and 50% Glycerol.
<b>Storage:</b>	Store at -20 °C for one year. Avoid repeated freeze/thaw cycles. The lyophilized antibody is stable at room temperature for at least one month and for greater than a year when kept at -20°C. When reconstituted in sterile pH 7.4 0.01M PBS or diluent of antibody the antibody is stable for at least two weeks at 2-4 °C.
<b>PubMed:</b>	<a href="#">PubMed</a>
<b>Product Detail:</b>	The protein encoded by this gene is a member of the cyclin family of proteins. The encoded protein interacts with cyclin-dependent kinase 8 and induces the phosphorylation of the carboxy-terminal domain of the large subunit of RNA polymerase II. The level of mRNAs for this gene peaks in the G1 phase of the cell cycle. Two transcript variants

encoding different isoforms have been found for this gene. [provided by RefSeq, Jul 2008]

**Function:**

Component of the Mediator complex, a coactivator involved in regulated gene transcription of nearly all RNA polymerase II-dependent genes. Mediator functions as a bridge to convey information from gene-specific regulatory proteins to the basal RNA polymerase II transcription machinery. Mediator is recruited to promoters by direct interactions with regulatory proteins and serves as a scaffold for the assembly of a functional preinitiation complex with RNA polymerase II and the general transcription factors. Binds to and activates cyclin-dependent kinase CDK8 that phosphorylates the CTD (C-terminal domain) of the large subunit of RNA polymerase II (RNAP II), which may inhibit the formation of a transcription initiation complex.

**Subcellular Location:**

Nucleus.

**Tissue Specificity:**

Highest levels in pancreas. High levels in heart, liver, skeletal muscle and kidney. Low levels in brain.

**Post-translational modifications:**

Phosphorylated upon DNA damage, probably by ATM or ATR.

**Similarity:**

Belongs to the cyclin family. Cyclin C subfamily.  
Contains 1 cyclin N-terminal domain.

**SWISS:**

P24863

**Gene ID:**

892

**Database links:**

[Entrez Gene: 892](#) Human

[Entrez Gene: 51813](#) Mouse

[Entrez Gene: 114839](#) Rat

[Omim: 123838](#) Human

[SwissProt: P24863](#) Human

[SwissProt: Q62447](#) Mouse

[SwissProt: P39947](#) Rat

[Unigene: 430646](#) Human

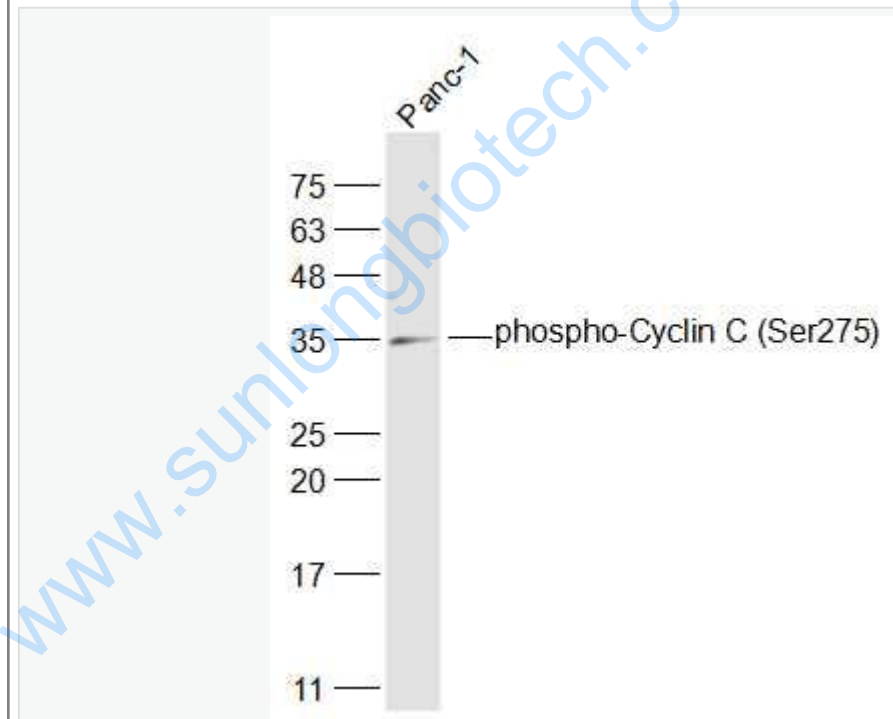
[Unigene: 278584](#) Mouse

[Unigene: 106758](#) Rat

**Important Note:**

This product as supplied is intended for research use only, not for use in human, therapeutic or diagnostic applications.

**Picture:**



Sample:

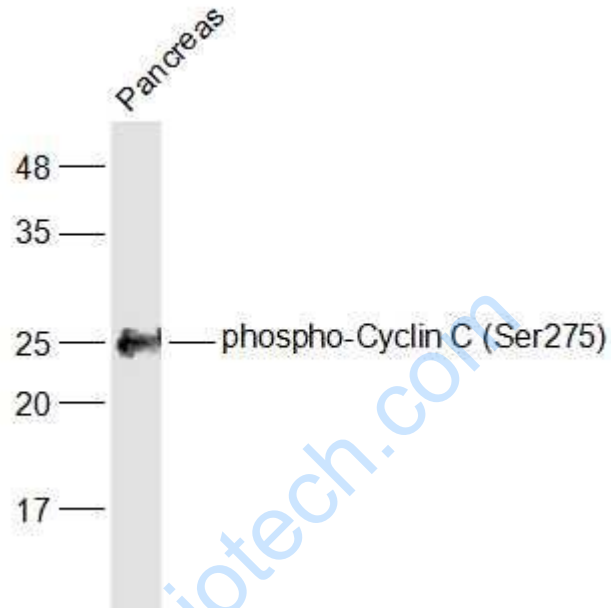
Panc-1(Human) Cell Lysate at 30 ug

Primary: Anti-phospho-Cyclin C (Ser275) (SL14136R) at 1/1000 dilution

Secondary: IRDye800CW Goat Anti-Rabbit IgG at 1/20000 dilution

Predicted band size: 33 kD

Observed band size: 35 kD



Sample:

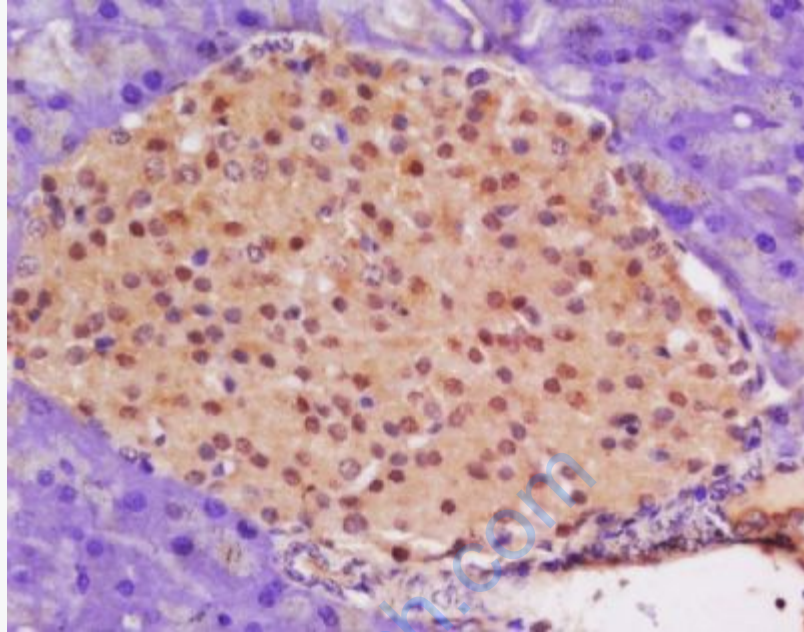
Pancreas (Mouse) Lysate at 40 ug

Primary: Anti-phospho-Cyclin C (Ser275) (SL14136R) at 1/1000 dilution

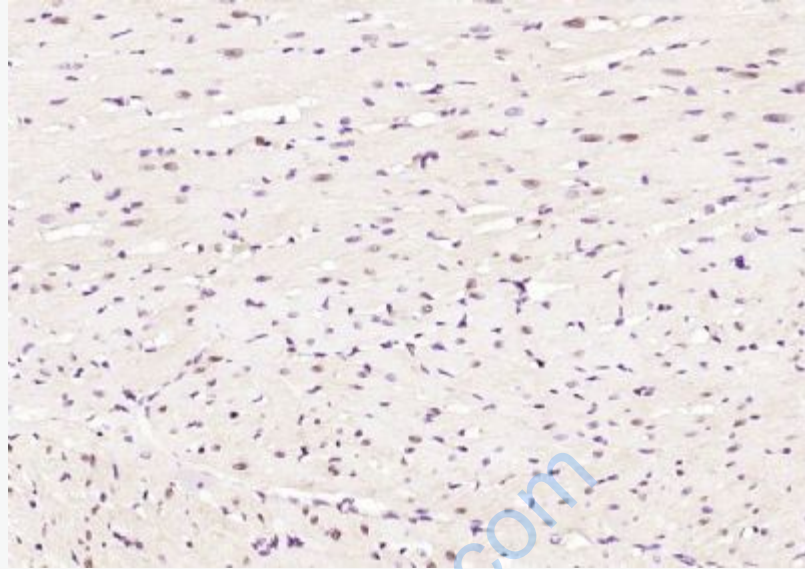
Secondary: IRDye800CW Goat Anti-Rabbit IgG at 1/20000 dilution

Predicted band size: 33 kD

Observed band size: 22 kD



Tissue/cell: rat pancreas tissue; 4% Paraformaldehyde-fixed and paraffin-embedded;  
Antigen retrieval: citrate buffer ( 0.01M, pH 6.0 ), Boiling bathing for 15min; Block endogenous peroxidase by 3% Hydrogen peroxide for 30min; Blocking buffer (normal goat serum,C-0005) at 37°C for 20 min;  
Incubation: Anti-phospho-Cyclin C (Ser275) Polyclonal Antibody, Unconjugated(SL14136R) 1:400, overnight at 4°C, followed by conjugation to the secondary antibody(SP-0023) and DAB(C-0010) staining



Paraformaldehyde-fixed, paraffin embedded (rat heart); Antigen retrieval by boiling in sodium citrate buffer (pH6.0) for 15min; Block endogenous peroxidase by 3% hydrogen peroxide for 20 minutes; Blocking buffer (normal goat serum) at 37°C for 30min; Antibody incubation with (phospho-Cyclin C (Ser275)) Polyclonal Antibody, Unconjugated (SL14136R) at 1:200 overnight at 4°C, followed by operating according to SP Kit(Rabbit) (sp-0023) instructions and DAB staining.