



Rabbit Anti-CYP2C18 antibody

SL14150R

Product Name:	CYP2C18
Chinese Name:	细胞色素P450 2C18抗体
Alias:	(S) mephenytoin hydroxylase associated cytochrome P450; CPCI; CYP2C 18; CYP2C; CYP2C17; CP2CI_HUMAN; CYPIIC18; Cytochrome P450 2C18; Cytochrome P450 6B/29C; Cytochrome P450 family 2 subfamily C polypeptide 18; Cytochrome P450 subfamily IIC (mephenytoin 4 hydroxylase) polypeptide 17; Cytochrome P450 subfamily IIC (mephenytoin 4 hydroxylase) polypeptide 18; Flavoprotein linked monooxygenase; Microsomal monooxygenase; P450 6B/29C; P450IIC17; Unspecific monooxygenase.
Organism Species:	Rabbit
Clonality:	Polyclonal
React Species:	Human,Mouse,Rat,Pig,Rabbit,Sheep,
Applications:	WB=1:500-2000ELISA=1:500-1000 not yet tested in other applications. optimal dilutions/concentrations should be determined by the end user.
Molecular weight:	56kDa
Cellular localization:	cytoplasmic
Form:	Lyophilized or Liquid
Concentration:	1mg/ml
immunogen:	KLH conjugated synthetic peptide derived from human CYP2C18:401-490/490
Lsotype:	IgG
Purification:	affinity purified by Protein A
Storage Buffer:	0.01M TBS(pH7.4) with 1% BSA, 0.03% Proclin300 and 50% Glycerol.
Storage:	Store at -20 °C for one year. Avoid repeated freeze/thaw cycles. The lyophilized antibody is stable at room temperature for at least one month and for greater than a year when kept at -20°C. When reconstituted in sterile pH 7.4 0.01M PBS or diluent of antibody the antibody is stable for at least two weeks at 2-4 °C.
PubMed:	PubMed
Product Detail:	This gene encodes a member of the cytochrome P450 superfamily of enzymes. The cytochrome P450 proteins are monooxygenases which catalyze many reactions involved

in drug metabolism and synthesis of cholesterol, steroids and other lipids. This protein localizes to the endoplasmic reticulum but its specific substrate has not yet been determined. The gene is located within a cluster of cytochrome P450 genes on chromosome 10q24. An additional gene, CYP2C17, was once thought to exist; however, CYP2C17 is now considered an artefact based on a chimera of CYP2C18 and CYP2C19. Alternatively spliced transcript variants encoding different isoforms have been found for this gene. [provided by RefSeq, Jul 2008]

Function:

CYP2C18 is a member of the cytochrome P450 superfamily of enzymes. The cytochrome P450 proteins are monooxygenases which catalyze many reactions involved in drug metabolism and synthesis of cholesterol, steroids and other lipids. CYP2C18 oxidizes a variety of structurally unrelated compounds, including steroids, fatty acids, and xenobiotics.

Subcellular Location:

Endoplasmic reticulum membrane; Peripheral membrane protein. Microsome membrane; Peripheral membrane protein.

SWISS:

P33260

Gene ID:

1562

Database links:

[Entrez Gene: 1562](#) Human

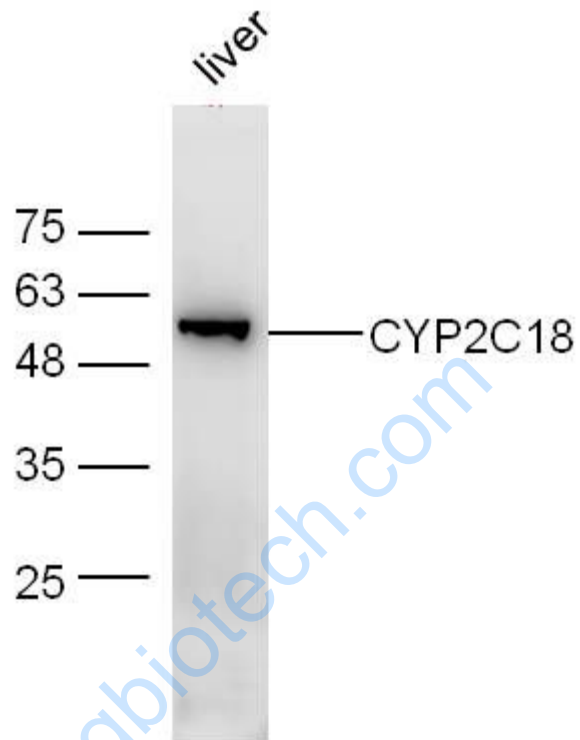
[Omim: 601131](#) Human

[SwissProt: P33260](#) Human

Important Note:

This product as supplied is intended for research use only, not for use in human, therapeutic or diagnostic applications.

Picture:



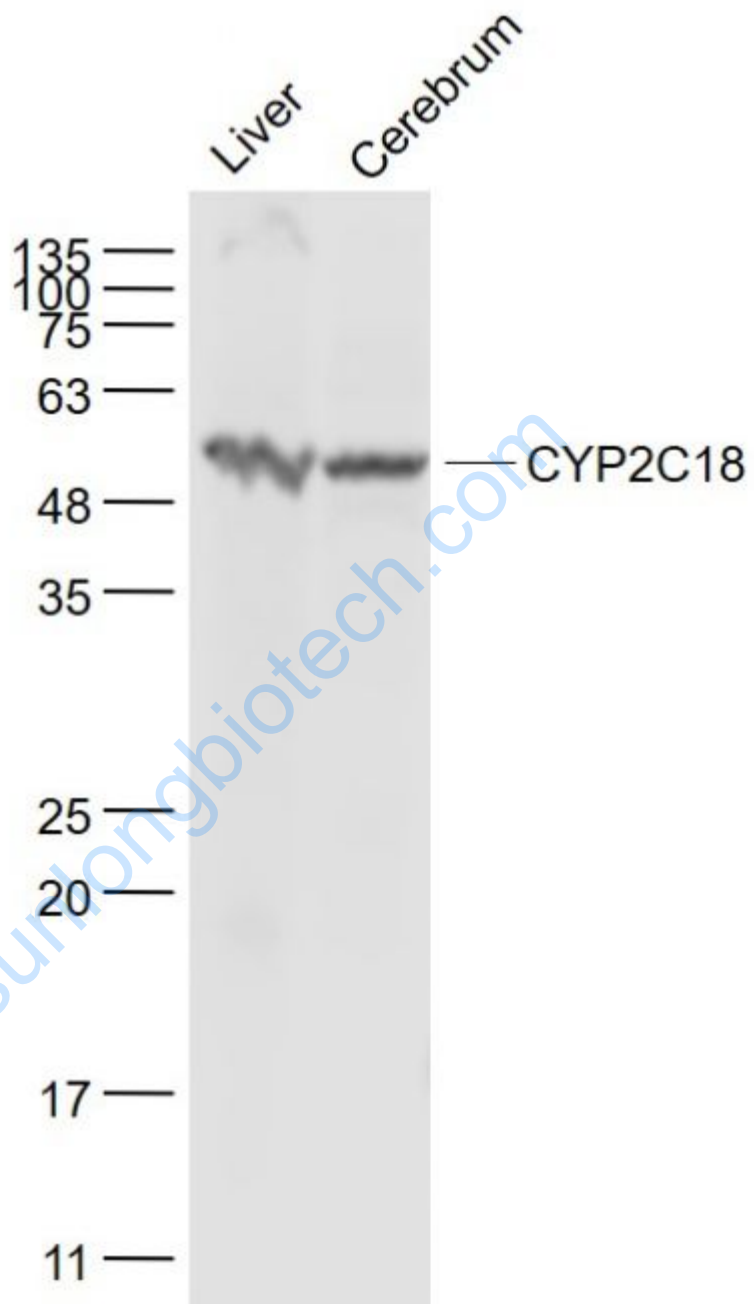
Protein: liver(mouse) lysate at 40ug;

Primary: rabbit Anti-CYP2C18 (SL14150R) at 1:300;

Secondary: HRP conjugated Goat-Anti-rabbit IgG(SL14150R) at 1: 5000;

Predicted band size: 56 kD

Observed band size: 56 kD



Sample:

Liver (Mouse) Lysate at 40 ug

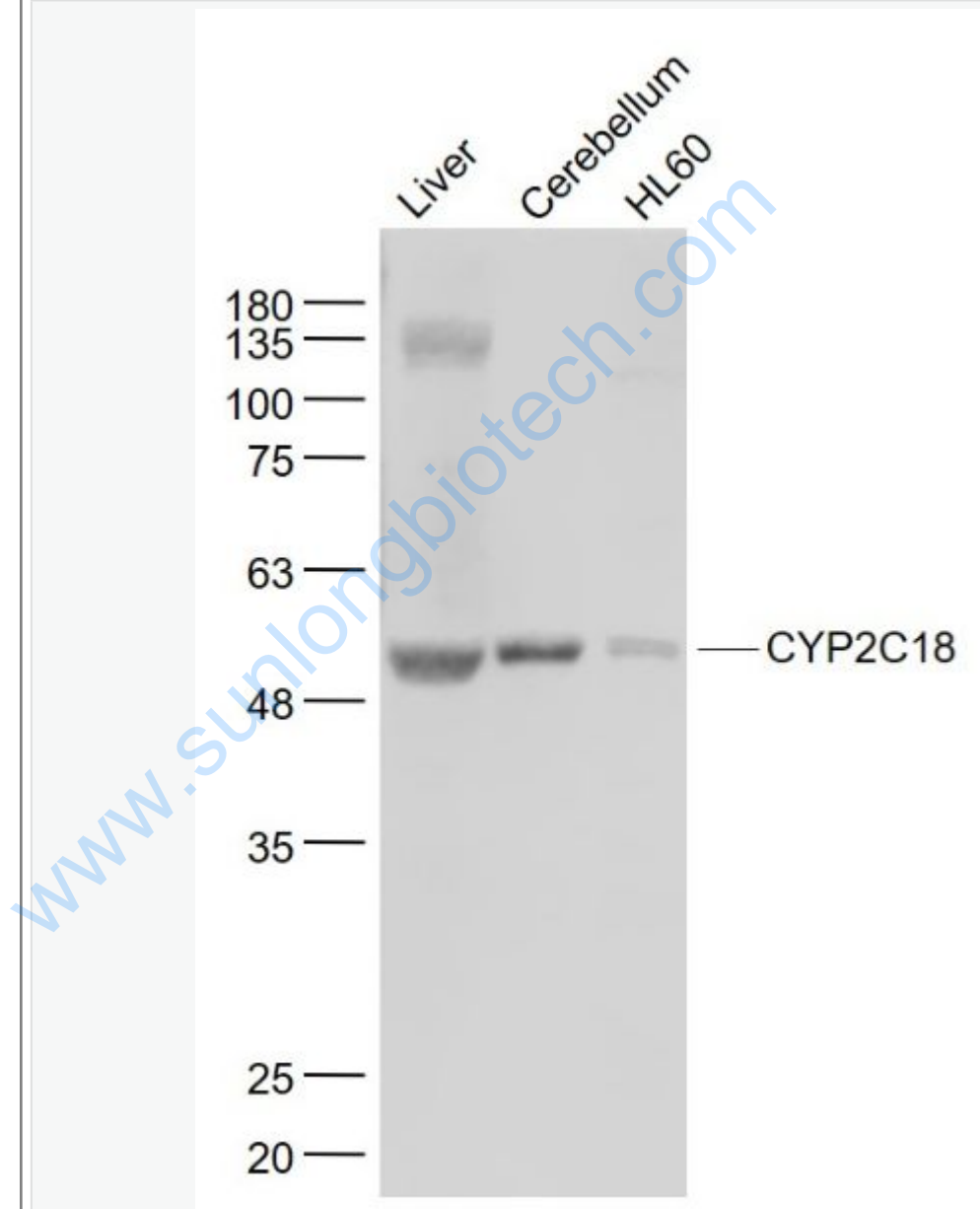
Cerebrum (Mouse) Lysate at 40 ug

Primary: Anti- CYP2C18 (SL14150R) at 1/1000 dilution

Secondary: IRDye800CW Goat Anti-Rabbit IgG at 1/20000 dilution

Predicted band size: 56 kD

Observed band size: 56 kD



Sample:

Liver (Mouse) Lysate at 40 ug

Cerebellum (Mouse) Lysate at 40 ug

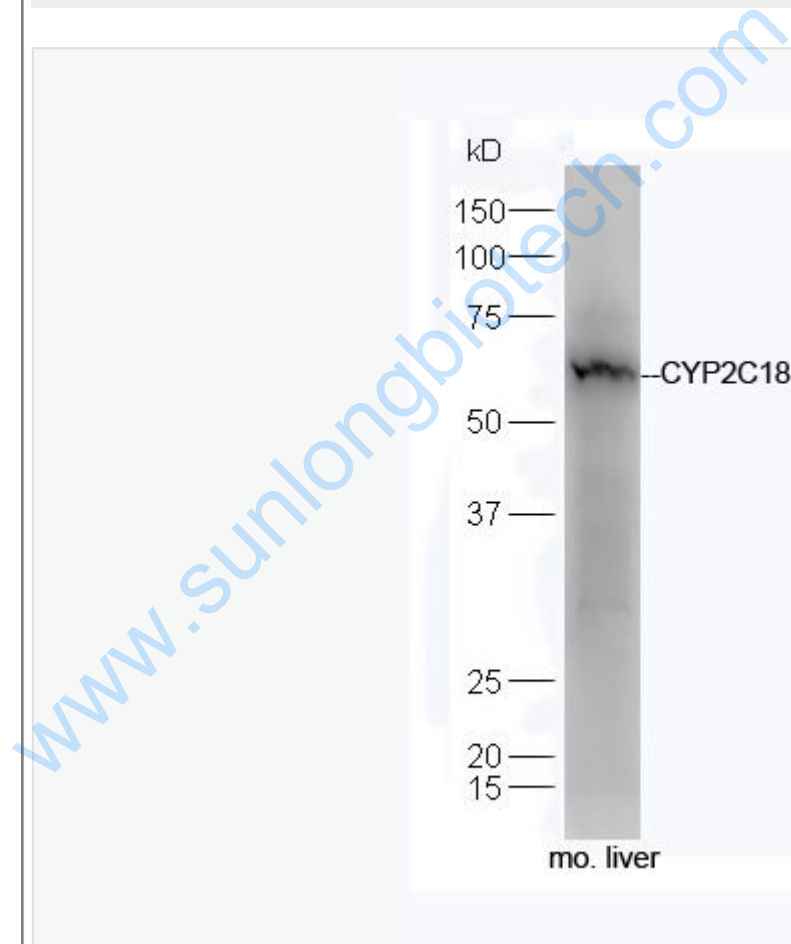
HL60(Human) Cell Lysate at 30 ug

Primary: Anti- CYP2C18 (SL14150R) at 1/1000 dilution

Secondary: IRDye800CW Goat Anti-Rabbit IgG at 1/20000 dilution

Predicted band size: 56 kD

Observed band size: 56 kD



Protein: liver(mouse) lysate at 40ug;

Primary: rabbit Anti-CYP2C18 (SL14150R) at 1:300;

Secondary: HRP conjugated Goat-Anti-rabbit IgG(SL14150R) at 1: 5000;

Predicted band size: 56 kD

	Observed band size: 56 kD
--	---------------------------

www.sunlongbiotech.com