



Rabbit Anti-CYP2C8 antibody

SL14151R

Product Name:	CYP2C8
Chinese Name:	细胞色素P450 2C8抗体
Alias:	CP2C8_HUMAN; CPC8; CYP2C8; CYP2C8; Cytochrome P450 2C8; Cytochrome P450 family 2 subfamily C polypeptide 8; Cytochrome P450 form 1; Cytochrome P450 IIC2; Cytochrome P450 MP-12; Cytochrome P450 MP-20; Cytochrome P450 subfamily IIC (mephenytoin 4 hydroxylase) polypeptide 8; Flavoprotein linked monooxygenase; Microsomal monooxygenase; MP 12/MP 20; P450 form 1; P450 IIC2; P450 MP 12/MP 20; S mephenytoin 4 hydroxylase; S-mephenytoin 4-hydroxylase; Xenobiotic monooxygenase.
Organism Species:	Rabbit
Clonality:	Polyclonal
React Species:	Human,Rat,
Applications:	WB=1:500-2000ELISA=1:500-1000IHC-P=1:400-800IHC-F=1:400-800ICC=1:100-500IF=1:100-500 (Paraffin sections need antigen repair) not yet tested in other applications. optimal dilutions/concentrations should be determined by the end user.
Molecular weight:	56kDa
Cellular localization:	cytoplasmic
Form:	Lyophilized or Liquid
Concentration:	1mg/ml
immunogen:	KLH conjugated synthetic peptide derived from human CYP2C8:51-150/490
Lsotype:	IgG
Purification:	affinity purified by Protein A
Storage Buffer:	0.01M TBS(pH7.4) with 1% BSA, 0.03% Proclin300 and 50% Glycerol.
Storage:	Store at -20 °C for one year. Avoid repeated freeze/thaw cycles. The lyophilized antibody is stable at room temperature for at least one month and for greater than a year when kept at -20°C. When reconstituted in sterile pH 7.4 0.01M PBS or diluent of antibody the antibody is stable for at least two weeks at 2-4 °C.
PubMed:	PubMed
Product Detail:	This gene encodes a member of the cytochrome P450 superfamily of enzymes. The

cytochrome P450 proteins are monooxygenases which catalyze many reactions involved in drug metabolism and synthesis of cholesterol, steroids and other lipids. This protein localizes to the endoplasmic reticulum and its expression is induced by phenobarbital. The enzyme is known to metabolize many xenobiotics, including the anticonvulsive drug mephenytoin, benzo(a)pyrene, 7-ethoxycoumarin, and the anti-cancer drug taxol. This gene is located within a cluster of cytochrome P450 genes on chromosome 10q24. Several transcript variants encoding a few different isoforms have been found for this gene. [provided by RefSeq, Nov 2010]

Function:

Cytochromes P450 are a group of heme-thiolate monooxygenases. In liver microsomes, this enzyme is involved in an NADPH-dependent electron transport pathway. It oxidizes a variety of structurally unrelated compounds, including steroids, fatty acids, and xenobiotics. In the epoxidation of arachidonic acid it generates only 14,15- and 11,12-cis-epoxyeicosatrienoic acids. It is the principal enzyme responsible for the metabolism the anti-cancer drug paclitaxel (taxol).

Subcellular Location:

Endoplasmic reticulum membrane. Microsome membrane.

Similarity:

Belongs to the cytochrome P450 family.

SWISS:

P10632

Gene ID:

1558

Database links:

[Entrez Gene: 1558](#) Human

[Omim: 601129](#) Human

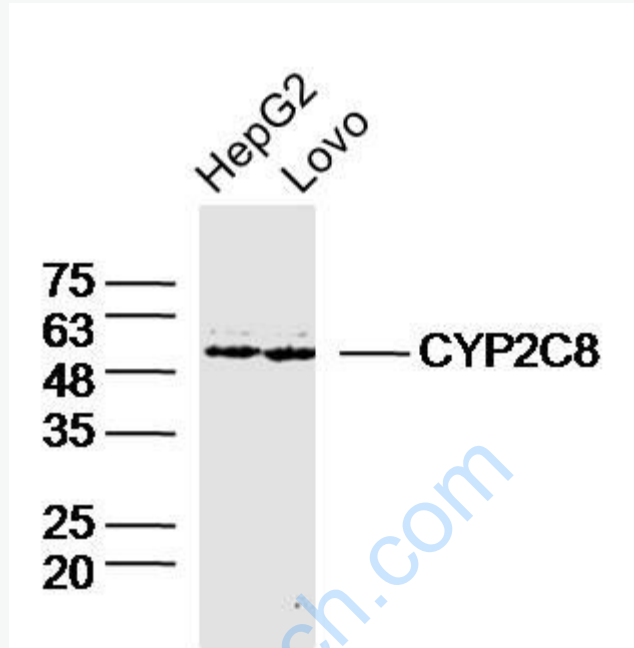
[SwissProt: P10632](#) Human

[Unigene: 709188](#) Human

Important Note:

This product as supplied is intended for research use only, not for use in human, therapeutic or diagnostic applications.

Picture:



Sample:

HepG2 Cell (Human) Lysate at 40 ug

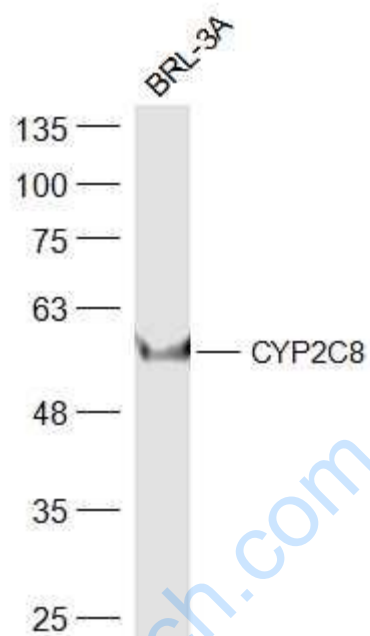
Lovo Cell (Human) Lysate at 40 ug

Primary: Anti-CYP2C8(SL14151R)at 1/300 dilution

Secondary: IRDye800CW Goat Anti-Rabbit IgG at 1/20000 dilution

Predicted band size: 56kD

Observed band size: 56kD



Sample:

BRL-3A(Rat) Cell Lysate at 40 ug

Primary: Anti-CYP2C8 (SL14151R) at 1/300 dilution

Secondary: IRDye800CW Goat Anti-Rabbit IgG at 1/20000 dilution

Predicted band size: 56 kD

Observed band size: 56 kD