



Rabbit Anti-CYP4Z1 antibody

SL14163R

| | |
|-------------------------------|---|
| Product Name: | CYP4Z1 |
| Chinese Name: | 细胞色素P450 4Z1抗体 |
| Alias: | CP4Z1_HUMAN; CYP4A20; CYP4Z1; CYPIVZ1; Cytochrome P450 4Z1; Cytochrome P450 family 4 subfamily Z polypeptide 1. |
| Organism Species: | Rabbit |
| Clonality: | Polyclonal |
| React Species: | Human, |
| Applications: | WB=1:500-2000ELISA=1:500-1000IHC-P=1:400-800IHC-F=1:400-800ICC=1:100-500IF=1:100-500 (Paraffin sections need antigen repair) not yet tested in other applications. optimal dilutions/concentrations should be determined by the end user. |
| Molecular weight: | 59kDa |
| Cellular localization: | cytoplasmic |
| Form: | Lyophilized or Liquid |
| Concentration: | 1mg/ml |
| immunogen: | KLH conjugated synthetic peptide derived from human CYP4Z1:51-150/505 |
| Lsotype: | IgG |
| Purification: | affinity purified by Protein A |
| Storage Buffer: | 0.01M TBS(pH7.4) with 1% BSA, 0.03% Proclin300 and 50% Glycerol. |
| Storage: | Store at -20 °C for one year. Avoid repeated freeze/thaw cycles. The lyophilized antibody is stable at room temperature for at least one month and for greater than a year when kept at -20°C. When reconstituted in sterile pH 7.4 0.01M PBS or diluent of antibody the antibody is stable for at least two weeks at 2-4 °C. |
| PubMed: | PubMed |
| Product Detail: | This gene encodes a member of the cytochrome P450 superfamily of enzymes. The cytochrome P450 proteins are monooxygenases which catalyze many reactions involved in drug metabolism and synthesis of cholesterol, steroids and other lipids. This gene is part of a cluster of cytochrome P450 genes on chromosome 1p33. [provided by RefSeq, Jul 2008] |

Subcellular Location:

Endoplasmic reticulum membrane. Microsome membrane.

Tissue Specificity:

Preferentially detected in breast carcinoma tissue and mammary gland, whereas only marginal expression is found in all other tested tissues.

Similarity:

Belongs to the cytochrome P450 family.

SWISS:

Q86W10

Gene ID:

199974

Database links:

[Entrez Gene: 199974](#) Human

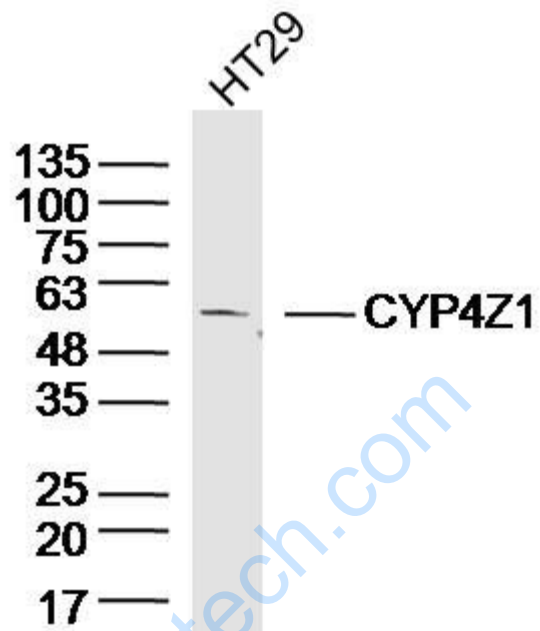
[SwissProt: Q86W10](#) Human

[Unigene: 176588](#) Human

Important Note:

This product as supplied is intended for research use only, not for use in human, therapeutic or diagnostic applications.

Picture:



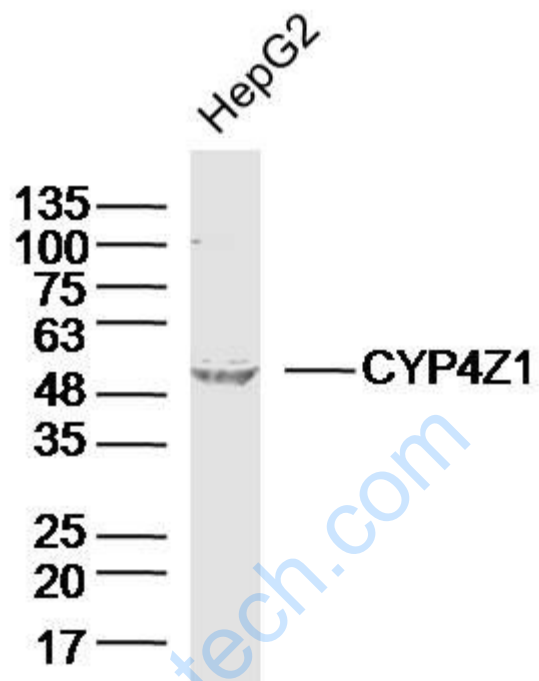
Sample: HT29(Human) Cell Lysate at 40 ug

Primary: Anti-CYP4Z1(SL14163R)at 1/300 dilution

Secondary: IRDye800CW Goat Anti-RabbitIgG at 1/20000 dilution

Predicted band size: 59kD

Observed band size: 59kD



Sample: HepG2 (Human) Cell Lysate at 40 ug

Primary: Anti-CYP4Z1(SL14163R) at 1/300 dilution

Secondary: IRDye800CW Goat Anti-Rabbit IgG at 1/20000 dilution

Predicted band size: 59kD

Observed band size: 59kD