



## Rabbit Anti-Cytochrome P450 1A1 + 1A2 antibody

SL14174R

<b>Product Name:</b>	Cytochrome P450 1A1 + 1A2
<b>Chinese Name:</b>	细胞色素P450 1A1+1A2抗体
<b>Alias:</b>	Aryl hydrocarbon hydroxylase; CP11; CP12; CYP1A1; CYP1A2; CYPIA1; CP1A1_HUMAN; CYPIA2; CP1A2_HUMAN; Cytochrome P450 family 1 subfamily A polypeptide 1; Cytochrome P450 family 1 subfamily A polypeptide 2; Cytochrome P450 subfamily I aromatic compound inducible polypeptide 1; Cytochrome P450 subfamily I aromatic compound inducible polypeptide 2; P1 450; P3 450; P450 form 4; P450 form 6; P450 P1; P450 P3.
<b>Organism Species:</b>	Rabbit
<b>Clonality:</b>	Polyclonal
<b>React Species:</b>	Human,Mouse,Rat,Dog,Cow,Rabbit,Sheep,
<b>Applications:</b>	WB=1:500-2000ELISA=1:500-1000IHC-P=1:400-800IHC-F=1:400-800ICC=1:100-500IF=1:100-500 (Paraffin sections need antigen repair) not yet tested in other applications. optimal dilutions/concentrations should be determined by the end user.
<b>Molecular weight:</b>	58kDa
<b>Cellular localization:</b>	cytoplasmicThe cell membrane
<b>Form:</b>	Lyophilized or Liquid
<b>Concentration:</b>	1mg/ml
<b>immunogen:</b>	KLH conjugated synthetic peptide derived from human Cytochrome P450 1A1 + 1A2:61-160/512
<b>Lsotype:</b>	IgG
<b>Purification:</b>	affinity purified by Protein A
<b>Storage Buffer:</b>	0.01M TBS(pH7.4) with 1% BSA, 0.03% Proclin300 and 50% Glycerol.
<b>Storage:</b>	Store at -20 °C for one year. Avoid repeated freeze/thaw cycles. The lyophilized antibody is stable at room temperature for at least one month and for greater than a year when kept at -20°C. When reconstituted in sterile pH 7.4 0.01M PBS or diluent of antibody the antibody is stable for at least two weeks at 2-4 °C.
<b>PubMed:</b>	<a href="#">PubMed</a>
<b>Product Detail:</b>	This gene, CYP1A1, encodes a member of the cytochrome P450 superfamily of

enzymes. The cytochrome P450 proteins are monooxygenases which catalyze many reactions involved in drug metabolism and synthesis of cholesterol, steroids and other lipids. This protein localizes to the endoplasmic reticulum and its expression is induced by some polycyclic aromatic hydrocarbons (PAHs), some of which are found in cigarette smoke. The enzyme's endogenous substrate is unknown; however, it is able to metabolize some PAHs to carcinogenic intermediates. The gene has been associated with lung cancer risk. A related family member, CYP1A2, is located approximately 25 kb away from CYP1A1 on chromosome 15. [provided by RefSeq, Jul 2008]

**Function:**

Cytochrome P450 oxidase (commonly abbreviated CYP) is a generic term for a large number of related, but distinct, oxidative enzymes important in vertebrate physiology. The cytochrome P450 mixed-function monooxygenase system is probably the most important element of Phase I metabolism in mammals. P450s are membrane-bound, either in the inner membrane of mitochondria or in the endoplasmic reticulum of cells where they metabolise thousands of endogenous and exogenous compounds. In the liver, these substrates include toxins, drugs, and other unneeded and potentially harmful molecules. Humans have 18 families of cytochrome P450 genes and 43 subfamilies; the CYP1 family is involved in drug metabolism and includes 3 subfamilies, 3 genes and 1 pseudogene.

**Subcellular Location:**

Endoplasmic reticulum

**Tissue Specificity:**

Lung, lymphocytes and placenta.

**Similarity:**

Belongs to the cytochrome P450 family.

**SWISS:**

P04798/P05177

**Gene ID:**

1543/1544

**Database links:**

[Entrez Gene: 1543](#) Human

[Entrez Gene: 1544](#) Human

[Entrez Gene: 13076](#) Mouse

[Entrez Gene: 13077](#) Mouse

[Entrez Gene: 24296](#) Rat

[Entrez Gene: 24297](#) Rat

[Olim: 108330](#) Human

[Olim: 124060](#) Human

[SwissProt: P04798](#) Human

[SwissProt: P05177](#) Human

[SwissProt: P00184](#) Mouse

[SwissProt: P00186](#) Mouse

[SwissProt: P00185](#) Rat

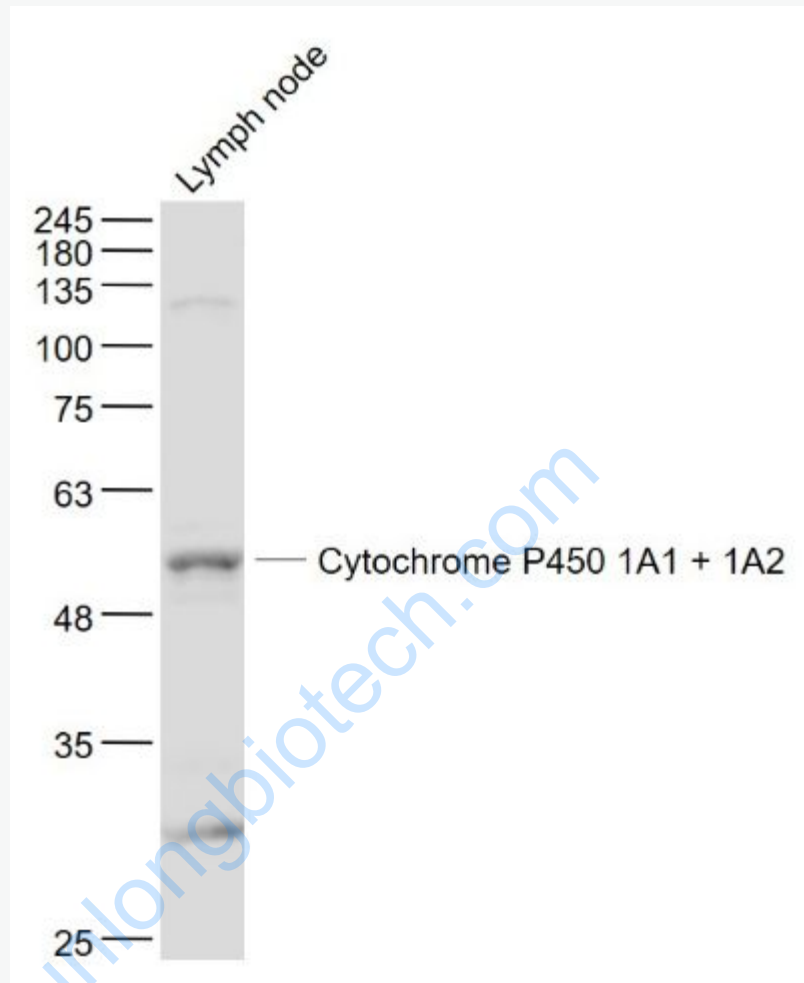
[SwissProt: P04799](#) Rat

**Important Note:**

This product as supplied is intended for research use only, not for use in human, therapeutic or diagnostic applications.

[www.sunlongbiotech.com](http://www.sunlongbiotech.com)

Picture:



Sample:

Lymph node (Mouse) Lysate at 40 ug

Primary: Anti- Cytochrome P450 1A1 + 1A2 (SL14174R) at 1/1000 dilution

Secondary: IRDye800CW Goat Anti-Rabbit IgG at 1/20000 dilution

Predicted band size: 58 kD

Observed band size: 58 kD