



## Rabbit Anti-DDX17 antibody

SL14215R

|                               |                                                                                                                                                                                                                                                                                                                                               |
|-------------------------------|-----------------------------------------------------------------------------------------------------------------------------------------------------------------------------------------------------------------------------------------------------------------------------------------------------------------------------------------------|
| <b>Product Name:</b>          | DDX17                                                                                                                                                                                                                                                                                                                                         |
| <b>Chinese Name:</b>          | ATP依赖解旋酶DDX17抗体                                                                                                                                                                                                                                                                                                                               |
| <b>Alias:</b>                 | Ddx17; DDX17_HUMAN; DEAD (Asp Glu Ala Asp) box polypeptide 17; DEAD box protein 17; DEAD box protein p72; DEAD/H (Asp Glu Ala Asp/His) box polypeptide 17; P72; Probable ATP-dependent RNA helicase DDX17; RH70; RNA dependent helicase p72; RNA-dependent helicase p72.                                                                      |
| <b>Organism Species:</b>      | Rabbit                                                                                                                                                                                                                                                                                                                                        |
| <b>Clonality:</b>             | Polyclonal                                                                                                                                                                                                                                                                                                                                    |
| <b>React Species:</b>         | Human,Mouse,Rat,Chicken,Dog,Pig,Cow,Horse,Sheep,                                                                                                                                                                                                                                                                                              |
| <b>Applications:</b>          | ELISA=1:500-1000IHC-P=1:400-800IHC-F=1:400-800ICC=1:100-500IF=1:100-500 (Paraffin sections need antigen repair)<br>not yet tested in other applications.<br>optimal dilutions/concentrations should be determined by the end user.                                                                                                            |
| <b>Molecular weight:</b>      | 60kDa                                                                                                                                                                                                                                                                                                                                         |
| <b>Cellular localization:</b> | The nucleus                                                                                                                                                                                                                                                                                                                                   |
| <b>Form:</b>                  | Lyophilized or Liquid                                                                                                                                                                                                                                                                                                                         |
| <b>Concentration:</b>         | 1mg/ml                                                                                                                                                                                                                                                                                                                                        |
| <b>immunogen:</b>             | KLH conjugated synthetic peptide derived from human DDX17:65-170/729                                                                                                                                                                                                                                                                          |
| <b>Lsotype:</b>               | IgG                                                                                                                                                                                                                                                                                                                                           |
| <b>Purification:</b>          | affinity purified by Protein A                                                                                                                                                                                                                                                                                                                |
| <b>Storage Buffer:</b>        | 0.01M TBS(pH7.4) with 1% BSA, 0.03% Proclin300 and 50% Glycerol.                                                                                                                                                                                                                                                                              |
| <b>Storage:</b>               | Store at -20 °C for one year. Avoid repeated freeze/thaw cycles. The lyophilized antibody is stable at room temperature for at least one month and for greater than a year when kept at -20°C. When reconstituted in sterile pH 7.4 0.01M PBS or diluent of antibody the antibody is stable for at least two weeks at 2-4 °C.                 |
| <b>PubMed:</b>                | <a href="#">PubMed</a>                                                                                                                                                                                                                                                                                                                        |
| <b>Product Detail:</b>        | DEAD box proteins, characterized by the conserved motif Asp-Glu-Ala-Asp (DEAD), are putative RNA helicases. They are implicated in a number of cellular processes involving alteration of RNA secondary structure, such as translation initiation, nuclear and mitochondrial splicing, and ribosome and splicesosome assembly. Based on their |

distribution patterns, some members of this family are believed to be involved in embryogenesis, spermatogenesis, and cellular growth and division. This gene encodes a DEAD box protein, which is an ATPase activated by a variety of RNA species, but not by dsDNA. This protein, and that encoded by DDX5 gene, are more closely related to each other than to any other member of the DEAD box family. This gene can encode multiple isoforms due to both alternative splicing and the use of alternative translation initiation codons, including a non-AUG (CUG) start codon. [provided by RefSeq, Apr 2011]

**Function:**

RNA-dependent ATPase activity.

**Subcellular Location:**

Nucleus.

**Tissue Specificity:**

Ubiquitous.

**Post-translational modifications:**

Phosphorylated upon DNA damage, probably by ATM or ATR.

**Similarity:**

Belongs to the DEAD box helicase family. DDX5/DBP2 subfamily.

Contains 1 helicase ATP-binding domain.

Contains 1 helicase C-terminal domain.

**SWISS:**

Q92841

**Gene ID:**

10521

**Database links:**

[Entrez Gene: 10521](#) Human

[Entrez Gene: 514323](#) Cow

[Entrez Gene: 67040](#) Mouse

[Entrez Gene: 315133](#) Rat

[Omim: 608469](#) Human

[SwissProt: Q92841](#) Human

[SwissProt: Q501J6](#) Mouse

[Unigene: 528305](#) Human

[Unigene: 725500](#) Human

[Unigene: 727678](#) Human

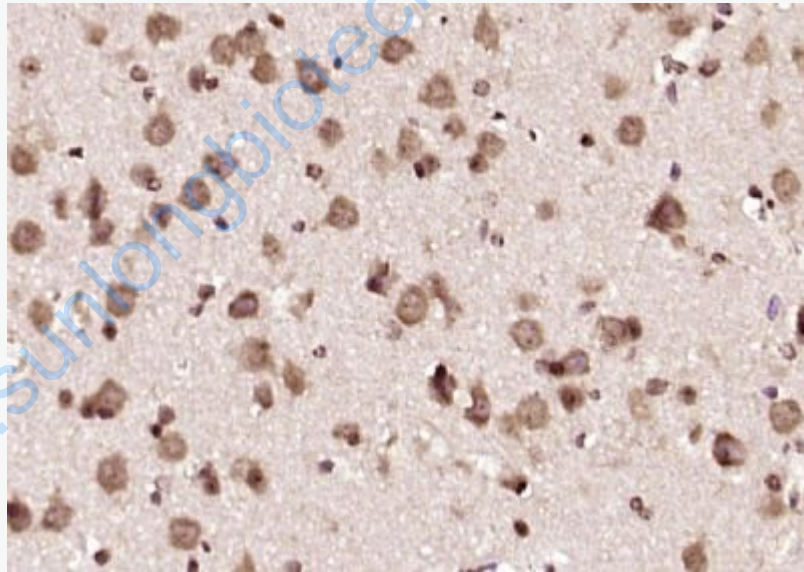
[Unigene: 29644](#) Mouse

[Unigene: 105298](#) Rat

**Important Note:**

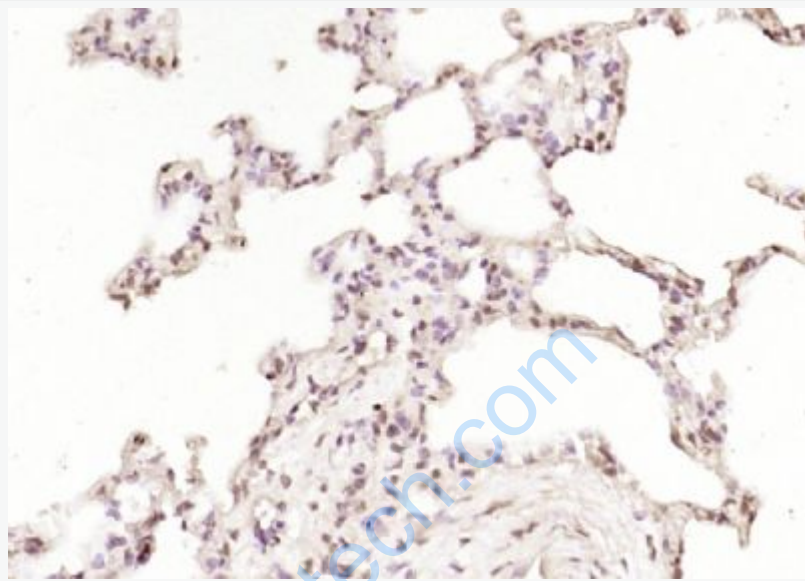
This product as supplied is intended for research use only, not for use in human, therapeutic or diagnostic applications.

**Picture:**



Paraformaldehyde-fixed, paraffin embedded (mouse brain); Antigen retrieval by boiling in sodium citrate buffer (pH6.0) for 15min; Block endogenous peroxidase by 3% hydrogen peroxide for 20 minutes; Blocking buffer (normal goat serum) at 37°C for 30min; Antibody incubation with (DDX17) Polyclonal Antibody, Unconjugated (SL14215R) at 1:200 overnight at 4°C, followed by operating according to SP

Kit(Rabbit) (sp-0023) instructions and DAB staining.



Paraformaldehyde-fixed, paraffin embedded (rat lung); Antigen retrieval by boiling in sodium citrate buffer (pH6.0) for 15min; Block endogenous peroxidase by 3% hydrogen peroxide for 20 minutes; Blocking buffer (normal goat serum) at 37°C for 30min; Antibody incubation with (DDX17) Polyclonal Antibody, Unconjugated (SL14215R) at 1:200 overnight at 4°C, followed by operating according to SP Kit(Rabbit) (sp-0023) instructions and DAB staining.