



Rabbit Anti-DEFB112 antibody

SL14245R

| | |
|-------------------------------|---|
| Product Name: | DEFB112 |
| Chinese Name: | 防御素β-112/β-defensin 112抗体 |
| Alias: | beta 112; Beta-defensin 112; Beta-defensin 12; DB112_HUMAN; DEFB-12; DEFB112; Defensin. |
| Organism Species: | Rabbit |
| Clonality: | Polyclonal |
| React Species: | Human, |
| Applications: | ELISA=1:500-1000IHC-P=1:400-800IHC-F=1:400-800ICC=1:100-500IF=1:100-500 (Paraffin sections need antigen repair) not yet tested in other applications. optimal dilutions/concentrations should be determined by the end user. |
| Molecular weight: | 13kDa |
| Cellular localization: | cytoplasmic |
| Form: | Lyophilized or Liquid |
| Concentration: | 1mg/ml |
| immunogen: | KLH conjugated synthetic peptide derived from human DEFB112:41-113/113 |
| Lsotype: | IgG |
| Purification: | affinity purified by Protein A |
| Storage Buffer: | 0.01M TBS(pH7.4) with 1% BSA, 0.03% Proclin300 and 50% Glycerol. |
| Storage: | Store at -20 °C for one year. Avoid repeated freeze/thaw cycles. The lyophilized antibody is stable at room temperature for at least one month and for greater than a year when kept at -20°C. When reconstituted in sterile pH 7.4 0.01M PBS or diluent of antibody the antibody is stable for at least two weeks at 2-4 °C. |
| PubMed: | PubMed |
| Product Detail: | beta-defensins are small cationic peptides with broad-spectrum antimicrobial activity against a variety of enveloped viruses, fungi and bacteria. Produced in mucosal epithelia and neutrophils of several species, beta-defensins are developmentally regulated. The family of beta-defensin proteins share a common defensin-motif that is characterized by multiple cysteine residues and a highly conserved tertiary structure. Besides playing a significant role in host immune defense, many beta-defensins also are involved in sperm |

maturation and capacitation. beta-defensin 112 is a 113 amino acid secreted protein that has antibacterial activity.

Function:

Has antibacterial activity.

Subcellular Location:

Secreted.

Similarity:

Belongs to the beta-defensin family.

SWISS:

Q30KQ8

Gene ID:

245915

Database links:

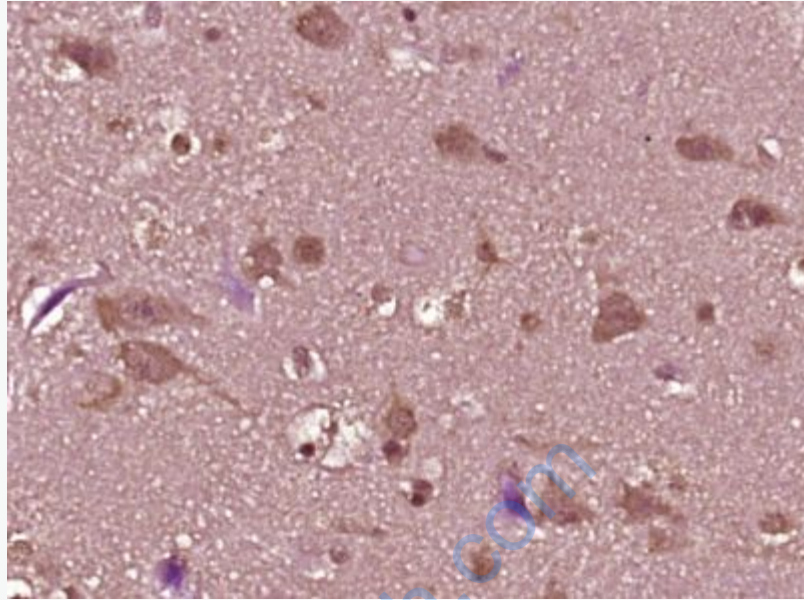
[Entrez Gene: 245915](#) Human

[SwissProt: Q30KQ8](#) Human

[Unigene: 571092](#) Human

Important Note:

This product as supplied is intended for research use only, not for use in human, therapeutic or diagnostic applications.



Picture:

Paraformaldehyde-fixed, paraffin embedded (Human glioma); Antigen retrieval by boiling in sodium citrate buffer (pH6.0) for 15min; Block endogenous peroxidase by 3% hydrogen peroxide for 20 minutes; Blocking buffer (normal goat serum) at 37°C for 30min; Antibody incubation with (DEFB112) Polyclonal Antibody, Unconjugated (SL14245R) at 1:400 overnight at 4°C, followed by operating according to SP Kit(Rabbit) (sp-0023) instructions and DAB staining.