



Rabbit Anti-Delta 1 Tubulin antibody

SL14263R

Product Name:	Delta 1 Tubulin
Chinese Name:	微管蛋白 $\delta 1/\delta$ Tubulin抗体
Alias:	Delta tubulin; Delta-tubulin; FLJ12709; TBD_HUMAN; TUBD; TUBD1; Tubulin delta chain.
Organism Species:	Rabbit
Clonality:	Polyclonal
React Species:	Human,Mouse,Rat,Cow,Horse,Sheep,
Applications:	WB=1:500-2000ELISA=1:500-1000IHC-P=1:400-800IHC-F=1:400-800ICC=1:100-500IF=1:100-500 (Paraffin sections need antigen repair) not yet tested in other applications. optimal dilutions/concentrations should be determined by the end user.
Molecular weight:	51kDa
Cellular localization:	cytoplasmic
Form:	Lyophilized or Liquid
Concentration:	1mg/ml
immunogen:	KLH conjugated synthetic peptide derived from human Delta 1 Tubulin:151-250/453
Lsotype:	IgG
Purification:	affinity purified by Protein A
Storage Buffer:	0.01M TBS(pH7.4) with 1% BSA, 0.03% Proclin300 and 50% Glycerol.
Storage:	Store at -20 °C for one year. Avoid repeated freeze/thaw cycles. The lyophilized antibody is stable at room temperature for at least one month and for greater than a year when kept at -20°C. When reconstituted in sterile pH 7.4 0.01M PBS or diluent of antibody the antibody is stable for at least two weeks at 2-4 °C.
PubMed:	PubMed
Product Detail:	Tubulin is a major cytoskeleton component that has five distinct forms, designated a, b, g, d and e tubulin. a and b tubulins form heterodimers which multimerize to form a microtubule filament. Multiple b Tubulin isoforms (b1, b2, b3, b4, b5, b6 and b8) have been characterized and are expressed in mammalian tissues. b1 and b4 are present throughout the cytosol, b2 is present in the nuclei and nucleoplasm, and b3 is a neuron-specific cytoskeletal protein. GammaTubulin forms the gammasome, which is required

for nucleating microtubule filaments at the centrosome. Both δ Tubulin and Delta Tubulin are associated with the centrosome. Gamma Tubulin is a homolog of the Chlamydomonas Gamma Tubulin Uni3 and is found in association with the centrioles, whereas ϵ Tubulin localizes to the pericentriolar material. Delta Tubulin exhibits a cell cycle-specific pattern of localization; first associating with only the older of the centrosomes in a newly duplicated pair, and later associating with both centrosomes.

Function:

In the elongating spermatid it is associated with the manchette, a specialized microtubule system present during reshaping of the sperm head.

Subcellular Location:

Cytoplasm > cytoskeleton > centrosome > centriole. Cytoplasm. Nucleus. Associated with centrioles. Both cytoplasmic and nuclear.

Similarity:

Belongs to the tubulin family.

SWISS:

Q9UJT1

Gene ID:

51174

Database links:

[Entrez Gene: 51174](#) Human

[Omim: 607344](#) Human

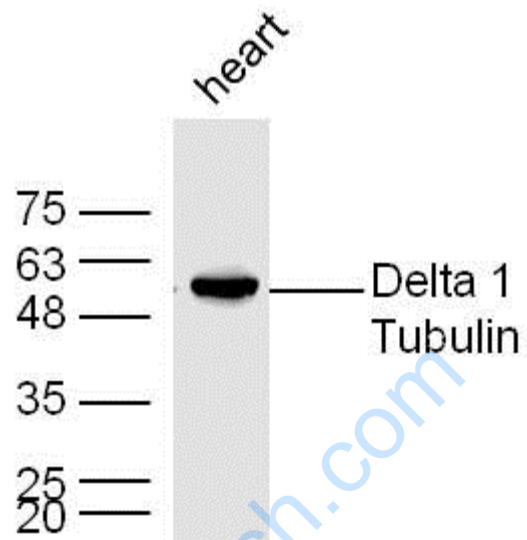
[SwissProt: Q9UJT1](#) Human

[Unigene: 463638](#) Human

Important Note:

This product as supplied is intended for research use only, not for use in human, therapeutic or diagnostic applications.

Picture:



Sample: heart (Mouse) Lysate at 40 ug

Primary: Anti-Delta 1 Tubulin(SL14263R) at 1/300 dilution

Secondary: IRDye800CW Goat Anti-Rabbit IgG at 1/20000 dilution

Predicted band size: 51 kD

Observed band size: 58 kD