



## Rabbit Anti-DHX8 antibody

SL14324R

<b>Product Name:</b>	DHX8
<b>Chinese Name:</b>	DHX8蛋白抗体
<b>Alias:</b>	ATP dependent RNA helicase DHX8; ATP-dependent RNA helicase dhx8; DDX 8; DDX8; DEAD/H (Asp Glu Ala Asp/His) box polypeptide 8 (RNA helicase); DEAD/H (Asp Glu Ala Asp/His) box polypeptide 8; DEAD/H box polypeptide 8; DEAH (Asp Glu Ala His) box polypeptide 8; DEAH box polypeptide 8; DEAH box protein 8; DHX 8; dhx8; DHX8_HUMAN; HRH 1; HRH1; PRP 22; PRP22; PRPF 22; PRPF22; RNA helicase HRH 1; RNA helicase HRH1.
<b>Organism Species:</b>	Rabbit
<b>Clonality:</b>	Polyclonal
<b>React Species:</b>	Human,Mouse,Rat,Dog,Pig,Cow,Horse,Sheep,
<b>Applications:</b>	ELISA=1:500-1000IHC-P=1:400-800IHC-F=1:400-800ICC=1:100-500IF=1:100-500 (Paraffin sections need antigen repair) not yet tested in other applications. optimal dilutions/concentrations should be determined by the end user.
<b>Molecular weight:</b>	139kDa
<b>Cellular localization:</b>	The nucleus
<b>Form:</b>	Lyophilized or Liquid
<b>Concentration:</b>	1mg/ml
<b>immunogen:</b>	KLH conjugated synthetic peptide derived from human DHX8:1101-1220/1220
<b>Lsotype:</b>	IgG
<b>Purification:</b>	affinity purified by Protein A
<b>Storage Buffer:</b>	0.01M TBS(pH7.4) with 1% BSA, 0.03% Proclin300 and 50% Glycerol.
<b>Storage:</b>	Store at -20 °C for one year. Avoid repeated freeze/thaw cycles. The lyophilized antibody is stable at room temperature for at least one month and for greater than a year when kept at -20°C. When reconstituted in sterile pH 7.4 0.01M PBS or diluent of antibody the antibody is stable for at least two weeks at 2-4 °C.
<b>PubMed:</b>	<a href="#">PubMed</a>
<b>Product Detail:</b>	DEAD box proteins, characterized by the conserved motif Asp-Glu-Ala-Asp (DEAD), are putative RNA helicases. They are implicated in a number of cellular processes

involving alteration of RNA secondary structure such as translation initiation, nuclear and mitochondrial splicing, and ribosome and spliceosome assembly. Based on their distribution patterns, some members of this family are believed to be involved in embryogenesis, spermatogenesis, and cellular growth and division. This gene encodes a DEAD box protein, which is highly homologous to yeast Prp22. This protein facilitates nuclear export of spliced mRNA by releasing the RNA from the spliceosome. [provided by RefSeq, Jul 2008]

**Function:**

Facilitates nuclear export of spliced mRNA by releasing the RNA from the spliceosome.

**Subunit:**

Identified in the spliceosome C complex. Interacts with ARRB2; the interaction is detected in the nucleus upon OR1D2 stimulation.

**Subcellular Location:**

Nucleus.

**Similarity:**

Belongs to the DEAD box helicase family. DEAH subfamily. DDX8/PRP22 sub-subfamily.

Contains 1 helicase ATP-binding domain.

Contains 1 helicase C-terminal domain.

Contains 1 S1 motif domain.

**SWISS:**

Q14562

**Gene ID:**

1659

**Database links:**

[Entrez Gene: 1659](#) Human

[Entrez Gene: 217207](#) Mouse

[Entrez Gene: 287727](#) Rat

[Omim: 600396](#) Human

[SwissProt: Q14562](#) Human

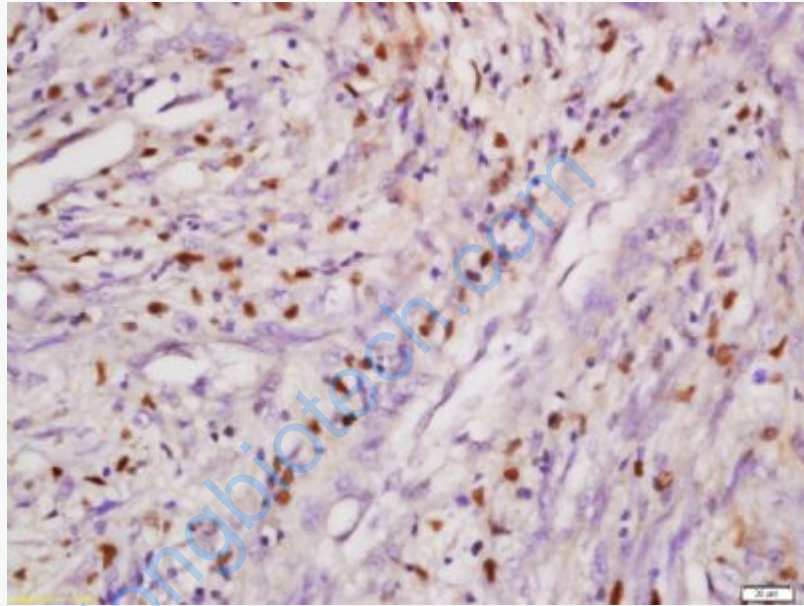
[SwissProt: A2A4P0](#) Mouse

[Unigene: 463105](#) Human

[Unigene: 28186](#) Mouse

**Important Note:**

This product as supplied is intended for research use only, not for use in human, therapeutic or diagnostic applications.



**Picture:**

Tissue/cell: human laryngocarcinoma; 4% Paraformaldehyde-fixed and paraffin-embedded;

Antigen retrieval: citrate buffer ( 0.01M, pH 6.0 ), Boiling bathing for 15min; Block endogenous peroxidase by 3% Hydrogen peroxide for 30min; Blocking buffer (normal goat serum,C-0005) at 37°C for 20 min;

Incubation: Anti-DHX8 Polyclonal Antibody, Unconjugated(SL14324R) 1:200, overnight at 4°C, followed by conjugation to the secondary antibody(SP-0023) and DAB(C-0010) staining