



Rabbit Anti-CD68 antibody

SL1432R

Product Name:	CD68
Chinese Name:	CD68抗体
Alias:	CD 68; CD68 antigen; CD68 molecule; DKFZp686M18236; GP110; Macrophage antigen CD68 (microsialin); macrosialin; SCARD1; Scavenger receptor class D member 1; macrosialin isoform A precursor; CD68_HUMAN; Macrosialin; Gp110; scavenger receptor class D, member 1; macrophage antigen CD68; LAMP4.
文献引用 PubMed :	<p>Specific References(3) SL1432R has been referenced in 3 publications.</p> <p>[IF=3.99]Hu, Kaili, et al. "Lactoferrin conjugated PEG-PLGA nanoparticles for brain delivery: Preparation, characterization and efficacy in Parkinson's disease." International journal of pharmaceutics 415.1 (2011): 273-283.IHC-P;Mouse. PubMed:21651967</p> <p>[IF=1.77]Lin, Li-Wen, et al. "Visfatin/pre-B cell colony-enhancing factor immunohistochemical overexpression in oral cancers." Journal of Applied Biomedicine (2014).IHC-P;Human. PubMed:not posted yet</p> <p>[IF=3.32]Silva, Katie, et al. "Cortical neurons are a prominent source of the proinflammatory cytokine osteopontin in HIV-associated neurocognitive disorders." Journal of NeuroVirology (2015): 1-12.IHC-P;Human. PubMed:25636782</p>
Organism Species:	Rabbit
Clonality:	Polyclonal
React Species:	Human,Cow,
Applications:	ELISA=1:500-1000IHC-P=1:400-800IHC-F=1:400-800ICC=1:100-500IF=1:100-500 (Paraffin sections need antigen repair)

	not yet tested in other applications. optimal dilutions/concentrations should be determined by the end user.
Molecular weight:	37kDa
Cellular localization:	cytoplasmicThe cell membrane
Form:	Lyophilized or Liquid
Concentration:	1mg/ml
immunogen:	KLH conjugated synthetic peptide derived from human CD68:1-130/354<Extracellular>
Lsotype:	IgG
Purification:	affinity purified by Protein A
Storage Buffer:	0.01M TBS(pH7.4) with 1% BSA, 0.03% Proclin300 and 50% Glycerol.
Storage:	Store at -20 °C for one year. Avoid repeated freeze/thaw cycles. The lyophilized antibody is stable at room temperature for at least one month and for greater than a year when kept at -20°C. When reconstituted in sterile pH 7.4 0.01M PBS or diluent of antibody the antibody is stable for at least two weeks at 2-4 °C.
PubMed:	PubMed
Product Detail:	<p>This gene encodes a 110-kD transmembrane glycoprotein that is highly expressed by human monocytes and tissue macrophages. It is a member of the lysosomal/endosomal-associated membrane glycoprotein (LAMP) family. The protein primarily localizes to lysosomes and endosomes with a smaller fraction circulating to the cell surface. It is a type I integral membrane protein with a heavily glycosylated extracellular domain and binds to tissue- and organ-specific lectins or selectins. The protein is also a member of the scavenger receptor family. Scavenger receptors typically function to clear cellular debris, promote phagocytosis, and mediate the recruitment and activation of macrophages. Alternative splicing results in multiple transcripts encoding different isoforms. [provided by RefSeq, Jul 2008].</p> <p>Function: Could play a role in phagocytic activities of tissue macrophages, both in intracellular lysosomal metabolism and extracellular cell-cell and cell-pathogen interactions. Binds to tissue- and organ-specific lectins or selectins, allowing homing of macrophage subsets to particular sites. Rapid recirculation of CD68 from endosomes and lysosomes to the plasma membrane may allow macrophages to crawl over selectin-bearing substrates or other cells.</p> <p>Subcellular Location: Isoform Short: Cell membrane; Single-pass type I membrane protein. Isoform Long: Endosome membrane; Single-pass type I membrane protein. Lysosome membrane; Single-pass type I membrane protein.</p> <p>Tissue Specificity: Highly expressed by blood monocytes and tissue macrophages. Also expressed in lymphocytes, fibroblasts and endothelial cells. Expressed in many tumor cell lines which could allow them to attach to selectins on vascular endothelium, facilitating their dissemination to secondary sites.</p> <p>Post-translational modifications:</p>

N- and O-glycosylated

Similarity:

Belongs to the LAMP family.

SWISS:

P34810

Gene ID:

968

Database links:

[Entrez Gene: 968](#)Human

[Entrez Gene: 12514](#)Mouse

[Omim: 153634](#)Human

[SwissProt: P34810](#)Human

[SwissProt: P31996](#)Mouse

[Unigene: 647419](#)Human

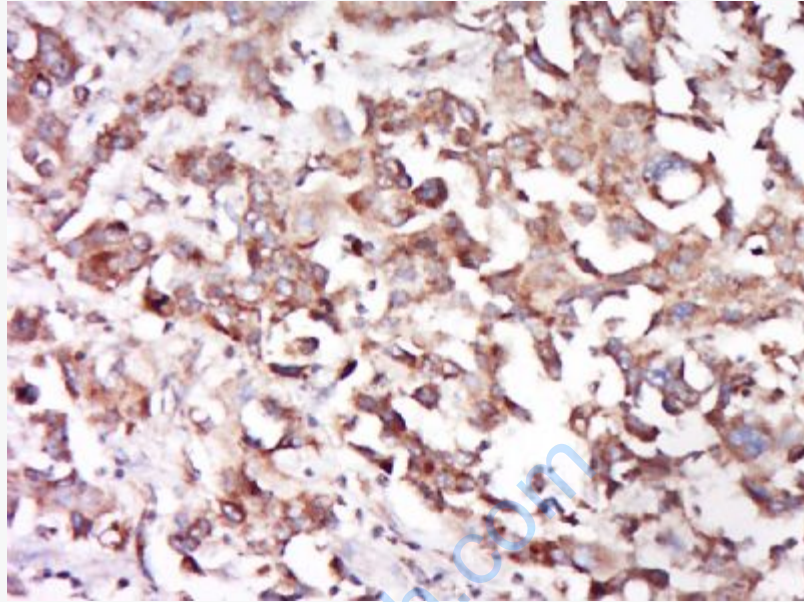
[Unigene: 15819](#)Mouse

Important Note:

This product as supplied is intended for research use only, not for use in human, therapeutic or diagnostic applications.

巨噬细胞Maker

CD68为巨噬细胞抗原又称酸性溶霉菌glycoprotein, 表达在单核、巨嗜、粒细胞和一些梭形细胞呈阳性表达。

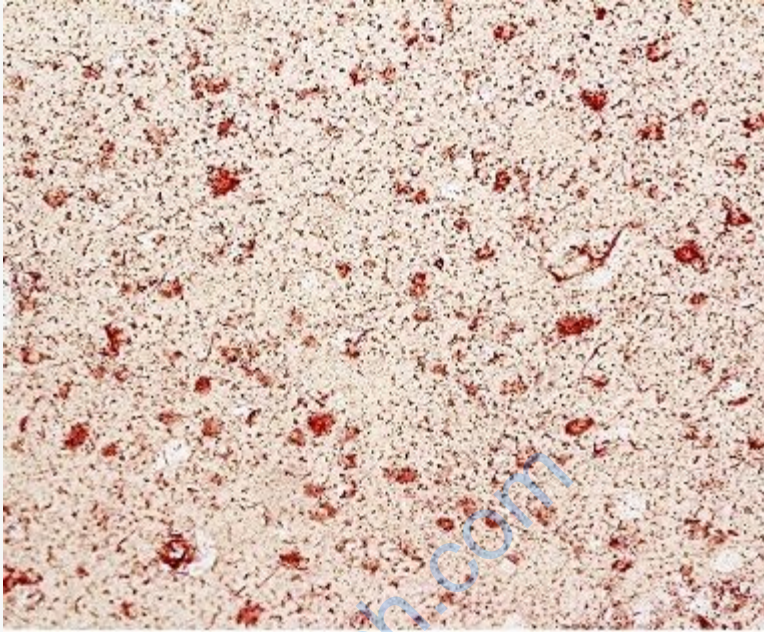


Picture:

Tissue/cell: human mammary cancer; 4% Paraformaldehyde-fixed and paraffin-embedded;

Antigen retrieval: citrate buffer (0.01M, pH 6.0), Boiling bathing for 15min; Block endogenous peroxidase by 3% Hydrogen peroxide for 30min; Blocking buffer (normal goat serum,C-0005) at 37°C for 20 min;

Incubation: Anti-CD68 Polyclonal Antibody, Unconjugated(SL1432R) 1:500, overnight at 4°C, followed by conjugation to the secondary antibody(SP-0023) and DAB(C-0010) staining



This image was generously provided by Amanda Brown, Ph.D. from Johns Hopkins University School of Medicine. Paraffin embedded human brain tissue labeled with Rabbit Anti-CD68 Polyclonal Antibody, Unconjugated (SL1432R) at 1:50 followed by conjugation to the secondary antibody and Permanent Fast Red Quanta staining

www.sunlongbiotech.com