



Rabbit Anti-DLC1 + DLC2 antibody

SL14340R

Product Name:	DLC1 + DLC2
Chinese Name:	肝癌缺失基因1/2抗体
Alias:	ARHGAP 7; ARHGAP7; Deleted in liver cancer 1; Deleted in liver cancer 1 protein; DLC 1; Dlc-1; DLC1; FLJ21120; HP; HP protein; KIAA1723; p122 RhoGAP; RHG07_HUMAN; Rho GTPase activating protein 7; Rho GTPase-activating protein 7; Rho type GTPase activating protein 7; Rho-type GTPase-activating protein 7; StAR related lipid transfer protein 12; StAR-related lipid transfer protein 12; STARD 12; StARD12; START domain containing protein 12; START domain-containing protein 12; STA13_HUMAN; StAR-related lipid transfer protein 13; 46H23.2; Deleted in liver cancer 2 protein; DLC-2; AltName: Full=Rho GTPase-activating protein; START domain-containing protein 13; StARD13.
Organism Species:	Rabbit
Clonality:	Polyclonal
React Species:	Human,Mouse,Rat,Rabbit,Sheep,
Applications:	ELISA=1:500-1000IHC-P=1:400-800IHC-F=1:400-800ICC=1:100-500IF=1:100-500 (Paraffin sections need antigen repair) not yet tested in other applications. optimal dilutions/concentrations should be determined by the end user.
Molecular weight:	171/122kDa
Cellular localization:	cytoplasmicThe cell membrane Mitochondrion
Form:	Lyophilized or Liquid
Concentration:	1mg/ml
immunogen:	KLH conjugated synthetic peptide derived from human Rho GTPase-activating protein 7:1201-1300/1528
Lsotype:	IgG
Purification:	affinity purified by Protein A
Storage Buffer:	0.01M TBS(pH7.4) with 1% BSA, 0.03% Proclin300 and 50% Glycerol.
Storage:	Store at -20 °C for one year. Avoid repeated freeze/thaw cycles. The lyophilized antibody is stable at room temperature for at least one month and for greater than a year when kept at -20°C. When reconstituted in sterile pH 7.4 0.01M PBS or diluent of

	antibody the antibody is stable for at least two weeks at 2-4 °C.
PubMed:	PubMed
Product Detail:	<p>This gene encodes a GTPase-activating protein (GAP) that is a member of the rhoGAP family of proteins which play a role in the regulation of small GTP-binding proteins. GAP family proteins participate in signaling pathways that regulate cell processes involved in cytoskeletal changes. This gene functions as a tumor suppressor gene in a number of common cancers, including prostate, lung, colorectal, and breast cancers. Multiple transcript variants due to alternative promoters and alternative splicing have been found for this gene.[provided by RefSeq, Apr 2010]</p> <p>Function: Functions as a GTPase-activating protein for the small GTPases RHOA, RHOB, RHOC and CDC42, terminating their downstream signaling. This induces morphological changes and detachment through cytoskeletal reorganization, playing a critical role in biological processes such as cell migration and proliferation. Also functions in vivo as an activator of the phospholipase PLCD1. Active DLC1 increases cell migration velocity but reduces directionality.</p> <p>Subunit: Interacts with EF1A1, facilitates EF1A1 distribution to the membrane periphery and ruffles upon growth factor stimulation and suppresses cell migration.</p> <p>Subcellular Location: Cytoplasm. Cell junction, focal adhesion. Membrane; Peripheral membrane protein. Note=Colocalizes with EF1A1 at actin-rich regions in the cell periphery.</p> <p>Tissue Specificity: Highest level of expression in the spleen, with rather lower levels in prostate, testis, ovary, small intestine and colon, but none in the thymus.</p> <p>Post-translational modifications: Phosphorylation at Ser-88 appears to control the dimer-monomer transition. According to PubMed:15193260, it is phosphorylated at Ser-88 by PAK1, however, according to PubMed:18650427, the DYNLL1 dimer is not accessible for PAK1 and the phosphorylation could not be demonstrated in vitro.</p> <p>Similarity: Contains 1 Rho-GAP domain. Contains 1 SAM (sterile alpha motif) domain. Contains 1 START domain.</p> <p>SWISS: Q96QB1</p> <p>Gene ID: 10395</p>

Database links:

[Entrez Gene: 10395](#)Human

[Entrez Gene: 90627](#)Human

[Entrez Gene: 50768](#)Mouse

[Oimim: 604258](#)Human

[Oimim: 609866](#)Human

[SwissProt: Q96QB1](#)Human

[SwissProt: Q9Y3M8](#)Human

[SwissProt: Q9R0Z9](#)Mouse

[Unigene: 134296](#)Human

[Unigene: 210875](#)Mouse

[SwissProt: P63170](#)Rat

[Unigene: 5120](#)Human

[Unigene: 256858](#)Mouse

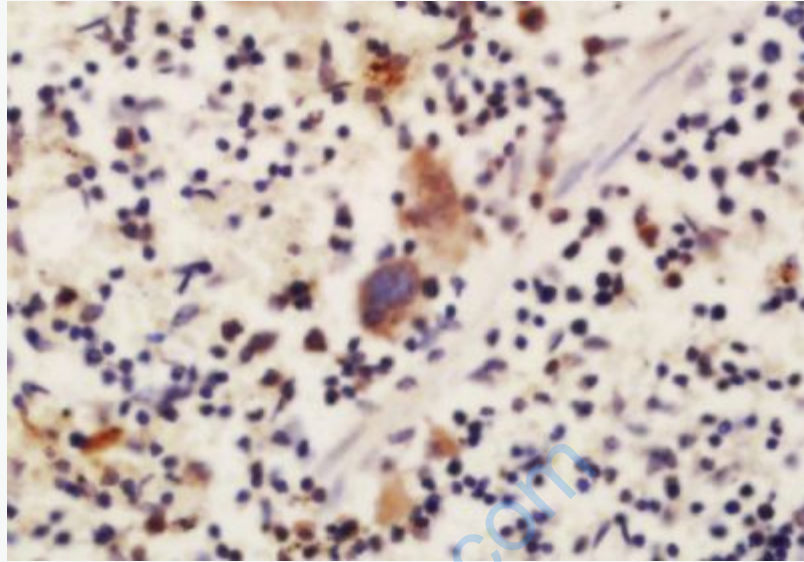
[Unigene: 35769](#)Rat

[Unigene: 507704](#)Human

[Unigene: 721224](#)Human

Important Note:

This product as supplied is intended for research use only, not for use in human, therapeutic or diagnostic applications.



Picture:

Tissue/cell: rat spleen tissue; 4% Paraformaldehyde-fixed and paraffin-embedded;
Antigen retrieval: citrate buffer (0.01M, pH 6.0), Boiling bathing for 15min; Block endogenous peroxidase by 3% Hydrogen peroxide for 30min; Blocking buffer (normal goat serum,C-0005) at 37°C for 20 min;
Incubation: Anti-DLC1 Polyclonal Antibody, Unconjugated(SL14340R) 1:200, overnight at 4°C, followed by conjugation to the secondary antibody(SP-0023) and DAB(C-0010) staining