



Rabbit Anti-DOPEY1 antibody

SL14409R

Product Name:	DOPEY1
Chinese Name:	迟钝蛋白家族1抗体
Alias:	Dopey-1; DOP1; DOP1_HUMAN; Dopey family member 1; DOPEY1; KIAA1117; Protein dopey 1; Protein dopey-1.
Organism Species:	Rabbit
Clonality:	Polyclonal
React Species:	Human,Mouse,Rat,Dog,Pig,Cow,Horse,Sheep,
Applications:	ELISA=1:500-1000IHC-P=1:400-800IHC-F=1:400-800ICC=1:100-500IF=1:100-500 (Paraffin sections need antigen repair) not yet tested in other applications. optimal dilutions/concentrations should be determined by the end user.
Molecular weight:	277kDa
Cellular localization:	cytoplasmic
Form:	Lyophilized or Liquid
Concentration:	1mg/ml
immunogen:	KLH conjugated synthetic peptide derived from human DOPEY1:351-450/2465
Lsotype:	IgG
Purification:	affinity purified by Protein A
Storage Buffer:	0.01M TBS(pH7.4) with 1% BSA, 0.03% Proclin300 and 50% Glycerol.
Storage:	Store at -20 °C for one year. Avoid repeated freeze/thaw cycles. The lyophilized antibody is stable at room temperature for at least one month and for greater than a year when kept at -20°C. When reconstituted in sterile pH 7.4 0.01M PBS or diluent of antibody the antibody is stable for at least two weeks at 2-4 °C.
PubMed:	PubMed
Product Detail:	Dopey-1 is a 2,465 amino acid protein that is thought to be involved in protein trafficking between the late golgi and early endosomes and may be involved in neurological alternations and mental retardation associated with Down syndrome. The gene encoding Dopey-1 maps to human chromosome 6, which contains 170 million base pairs and comprises nearly 6% of the human genome. Deletion of a portion of the q arm of chromosome 6 is associated with early onset intestinal cancer, suggesting the

presence of a cancer susceptibility locus. Additionally, Porphyria cutanea tarda, Parkinson's disease, Stickler syndrome and a susceptibility to bipolar disorder are all associated with genes that map to chromosome 6.

Function:

May be involved in protein traffic between late Golgi and early endosomes.

Similarity:

Belongs to the dopey family.

SWISS:

Q5JWR5

Gene ID:

23033

Database links:

[Entrez Gene: 23033](#) Human

[Entrez Gene: 320615](#) Mouse

[SwissProt: Q5JWR5](#) Human

[SwissProt: Q8BL99](#) Mouse

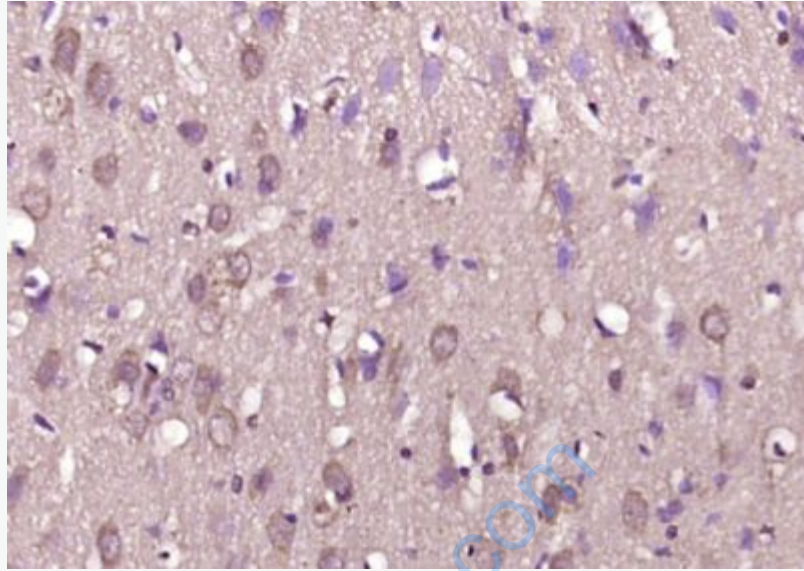
[Unigene: 520246](#) Human

[Unigene: 708998](#) Human

[Unigene: 245500](#) Mouse

Important Note:

This product as supplied is intended for research use only, not for use in human, therapeutic or diagnostic applications.



Picture:

Paraformaldehyde-fixed, paraffin embedded (rat brain); Antigen retrieval by boiling in sodium citrate buffer (pH6.0) for 15min; Block endogenous peroxidase by 3% hydrogen peroxide for 20 minutes; Blocking buffer (normal goat serum) at 37°C for 30min; Antibody incubation with (DOPEY1) Polyclonal Antibody, Unconjugated (SL14409R) at 1:200 overnight at 4°C, followed by operating according to SP Kit(Rabbit) (sp-0023) instructions and DAB staining.