



Rabbit Anti-Cytokeratin 5 antibody

SL1440R

Product Name:	Cytokeratin 5
Chinese Name:	细胞角蛋白5抗体
Alias:	Cytokeratin 5; Keratin, type II cytoskeletal 5; CK-5; CK5; Keratin-5; K5; 58 kDa cytokeratin; KRT5; CK 5; DDD; EBS 2; EBS2; K5; Keratin 5 (epidermolysis bullosa simplex Dowling-Meara/Kobner/Weber-Cockayne types); Keratin 5; Keratin Type II Cytoskeletal 5; Keratin5; KRT 5; KRT 5A; KRT5.
Organism Species:	Rabbit
Clonality:	Polyclonal
React Species:	Human,Mouse,Rat,Dog,Pig,Cow,Horse,Rabbit,
Applications:	WB=1:500-2000ELISA=1:500-1000Flow-Cyt=0.2µg/Test not yet tested in other applications. optimal dilutions/concentrations should be determined by the end user.
Molecular weight:	64kDa
Cellular localization:	The nucleuscytoplasmicThe cell membraneSecretory protein
Form:	Lyophilized or Liquid
Concentration:	1mg/ml
immunogen:	KLH conjugated synthetic peptide derived from human Cytokeratin 5:451-580/580
Lsotype:	IgG
Purification:	affinity purified by Protein A
Storage Buffer:	0.01M TBS(pH7.4) with 1% BSA, 0.03% Proclin300 and 50% Glycerol.
Storage:	Store at -20 °C for one year. Avoid repeated freeze/thaw cycles. The lyophilized antibody is stable at room temperature for at least one month and for greater than a year when kept at -20°C. When reconstituted in sterile pH 7.4 0.01M PBS or diluent of antibody the antibody is stable for at least two weeks at 2-4 °C.
PubMed:	PubMed
Product Detail:	Cytokeratins (CK) are intermediate filaments of epithelial cells, both in keratinising tissue (ie., skin) and non keratinising cells (ie., mesothelial cells). Although not a traditional marker for endothelial cells, cytokeratins have also been found in some microvascular endothelial cells. At least 20 different cytokeratins (CK) in the molecular range of 40 to 70 kDa and isoelectric points of 5 to 8.5 can be identified using two

dimensional gel electrophoresis. Biochemically, most members of the CK family fall into one of two classes, type I (acidic polypeptides) and type II (basic polypeptides). At least one member of the acidic family and one member of the basic family is expressed in all epithelial cells. Defects in KRT5 are a cause of epidermolysis bullosa simplex.

Subunit:

Belongs to the intermediate filament family.

DISEASE:

Defects in KRT5 are a cause of epidermolysis bullosa simplex Dowling-Meara type (DM-EBS) [MIM:131760]. DM-EBS is a severe form of intraepidermal epidermolysis bullosa characterized by generalized herpetiform blistering, milia formation, dystrophic nails, and mucous membrane involvement. Defects in KRT5 are the cause of epidermolysis bullosa simplex with migratory circinate erythema (EBSMCE) [MIM:609352]. EBSMCE is a form of intraepidermal epidermolysis bullosa characterized by unusual migratory circinate erythema. Skin lesions appear from birth primarily on the hands, feet, and legs but spare nails, ocular epithelia and mucosae. Lesions heal with brown pigmentation but no scarring. Electron microscopy findings are distinct from those seen in the DM-EBS, with no evidence of tonofilament clumping.

SWISS:

P13647

Gene ID:

3852

Database links:

[Entrez Gene: 3852](#)Human

[Entrez Gene: 110308](#)Mouse

[Entrez Gene: 369017](#)Rat

[Omir: 148040](#)Human

[SwissProt: P13647](#)Human

[SwissProt: Q922U2](#)Mouse

[SwissProt: Q6P6Q2](#)Rat

[Unigene: 433845](#)Human

[Unigene: 451847](#)Mouse

[Unigene: 129725](#)Rat

[Unigene: 195318](#)Rat

Important Note:

This product as supplied is intended for research use only, not for use in human, therapeutic or diagnostic applications.

细胞角蛋白5, 为高分子量细胞角蛋白 58 kDa

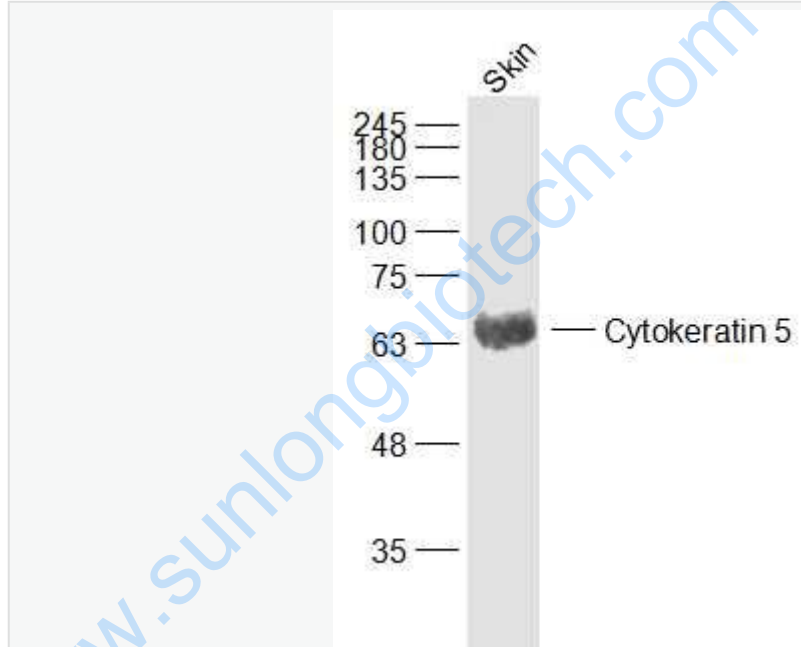
, 表达在皮肤的基底细胞和棘层细胞, 部分前列腺基底细胞, 与其它单层腺上皮不表达。主要用于间皮瘤与腺癌的鉴别诊断。

细胞角蛋白是一类与结构相关的蛋白家族, 其在epithelial

cells中形成Cytoskeleton中间丝。CK5是在表皮角质化细胞中大量表达的4种角蛋白

之一。CK5可用以区分正常细胞和Tumour细胞。在基底细胞上皮瘤、多种鳞状细胞癌(皮肤和舌)、多种epithelial cells和间皮瘤都有CK5的表达。

Picture:



Sample:

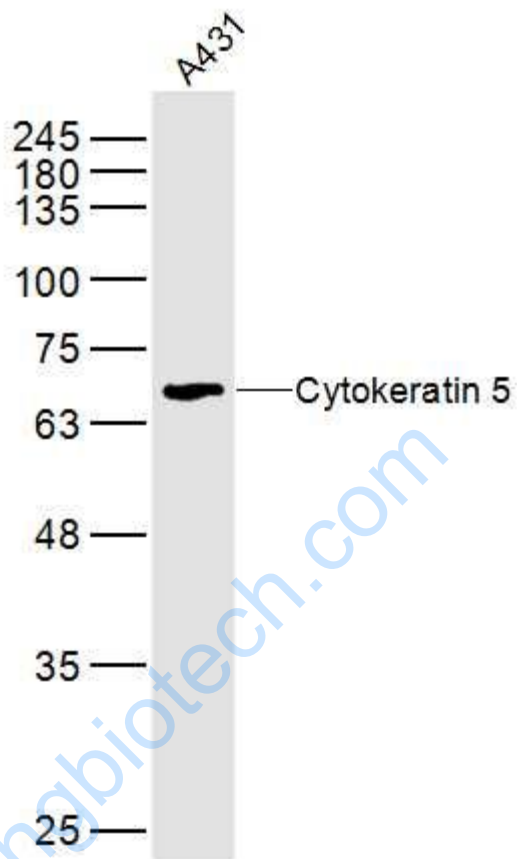
Skin (Rat) Lysate at 40 ug

Primary: Anti-Cytokeratin 5 (SL1440R) at 1/1000 dilution

Secondary: IRDye800CW Goat Anti-Rabbit IgG at 1/20000 dilution

Predicted band size: 64 kD

Observed band size: 64kD



Sample:

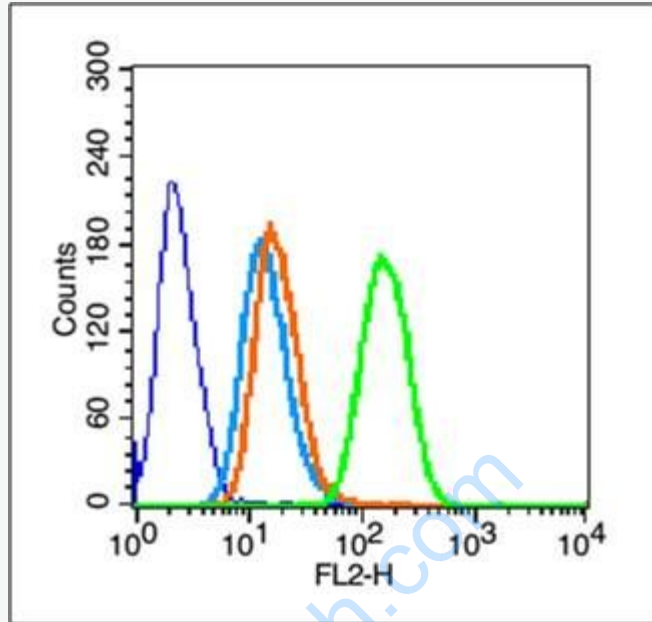
A431(Human) Cell Lysate at 40 ug

Primary: Anti-Cytokeratin 5 (SL1440R) at 1/300 dilution

Secondary: IRDye800CW Goat Anti-Rabbit IgG at 1/20000 dilution

Predicted band size: 64kD

Observed band size: 64 kD



Blank control (blue line): HeLa (fixed with 70% methanol (Overnight at 4°C) and then permeabilized with 90% ice-cold methanol for 20 min at -20°C).

Primary Antibody (green line): Rabbit Anti-Cytokeratin 5 antibody (SL1440R),
Dilution: 0.2µg /10⁶ cells;

Isotype Control Antibody (orange line): Rabbit IgG .

Secondary Antibody (white blue line): Goat anti-rabbit IgG-PE,Dilution: 1µg /test.