



## Rabbit Anti-EEPD1 antibody

SL14506R

<b>Product Name:</b>	EEPD1
<b>Chinese Name:</b>	EEPD1蛋白抗体
<b>Alias:</b>	EEPD1; EEPD1_HUMAN; Endonuclease/exonuclease/phosphatase family domain containing 1; Endonuclease/exonuclease/phosphatase family domain-containing protein 1; HSPC107; KIAA1706; OTTHUMP00000206928.
<b>Organism Species:</b>	Rabbit
<b>Clonality:</b>	Polyclonal
<b>React Species:</b>	Human,Mouse,Rat,Dog,Pig,Cow,Horse,Rabbit,Sheep,
<b>Applications:</b>	WB=1:500-2000ELISA=1:500-1000IHC-P=1:400-800IHC-F=1:400-800ICC=1:100-500IF=1:100-500 (Paraffin sections need antigen repair) not yet tested in other applications. optimal dilutions/concentrations should be determined by the end user.
<b>Molecular weight:</b>	62kDa
<b>Cellular localization:</b>	The nucleus
<b>Form:</b>	Lyophilized or Liquid
<b>Concentration:</b>	1mg/ml
<b>immunogen:</b>	KLH conjugated synthetic peptide derived from human EEPD1:9-100/569
<b>Lsotype:</b>	IgG
<b>Purification:</b>	affinity purified by Protein A
<b>Storage Buffer:</b>	0.01M TBS(pH7.4) with 1% BSA, 0.03% Proclin300 and 50% Glycerol.
<b>Storage:</b>	Store at -20 °C for one year. Avoid repeated freeze/thaw cycles. The lyophilized antibody is stable at room temperature for at least one month and for greater than a year when kept at -20°C. When reconstituted in sterile pH 7.4 0.01M PBS or diluent of antibody the antibody is stable for at least two weeks at 2-4 °C.
<b>PubMed:</b>	<a href="#">PubMed</a>
<b>Product Detail:</b>	EEPD1 is a 569 amino acid protein that contains one HhH domain. A significant decrease in the relative transcriptional level of EEPD1 is induced by long-term heat stress exposure. Conversely, EEPD1 is up-regulated in bovine adipogenic processes related to intramuscular preadipocyte differentiation. Encoded by a gene that maps to human chromosome 7p14.2, EEPD1 plays a role in DNA binding and repair.

Chromosome 7 makes up about 5% of the human genome and contains 158 million bases encoding more than 1,000 genes. Osteogenesis imperfecta, Pendred syndrome, Lissencephaly, Citrullinemia and Shwachman-Diamond syndrome are associated with Chromosome 7.

**Similarity:**

Contains 1 HhH domain.

**SWISS:**

Q7L9B9

**Gene ID:**

80820

**Database links:**

[Entrez Gene: 80820](#) Human

[Entrez Gene: 315500](#) Rat

[SwissProt: Q7L9B9](#) Human

[SwissProt: Q5XI74](#) Rat

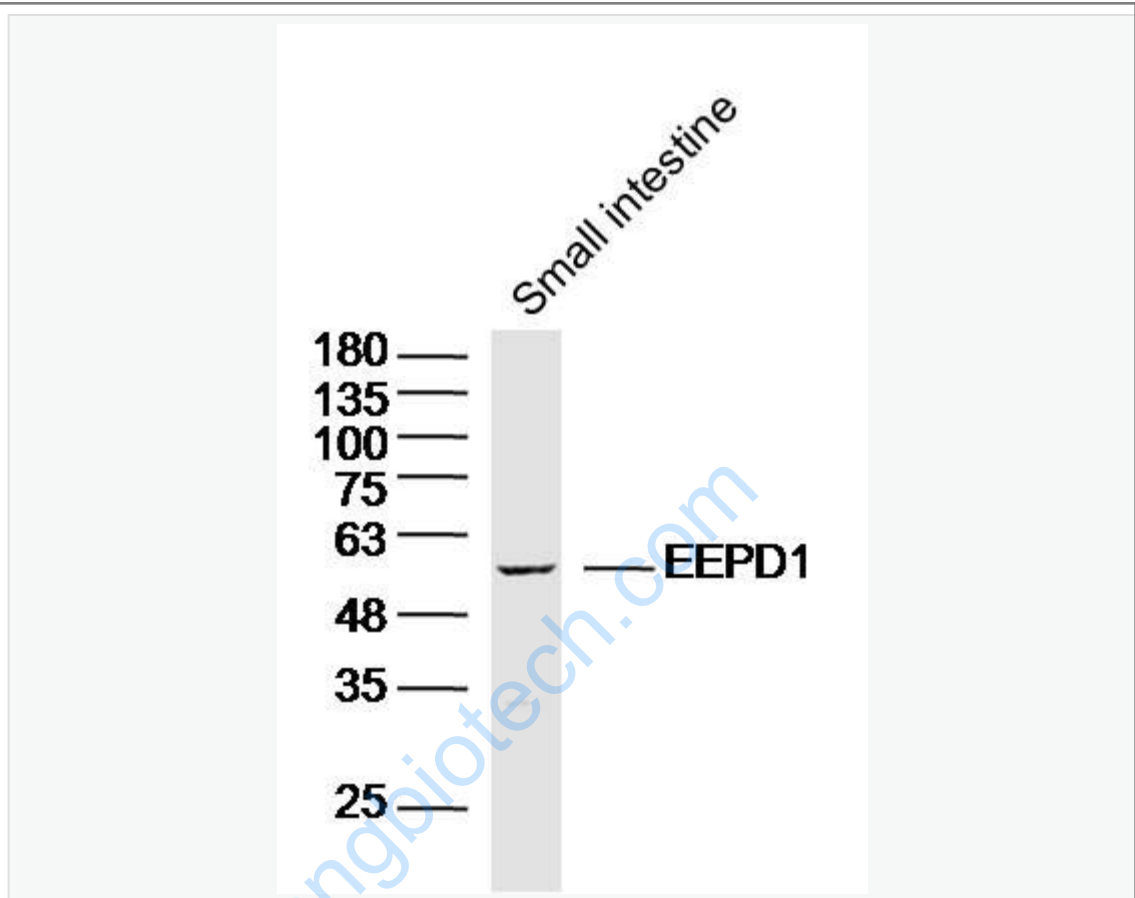
[Unigene: 487994](#) Human

[Unigene: 110716](#) Rat

**Important Note:**

This product as supplied is intended for research use only, not for use in human, therapeutic or diagnostic applications.

Picture:



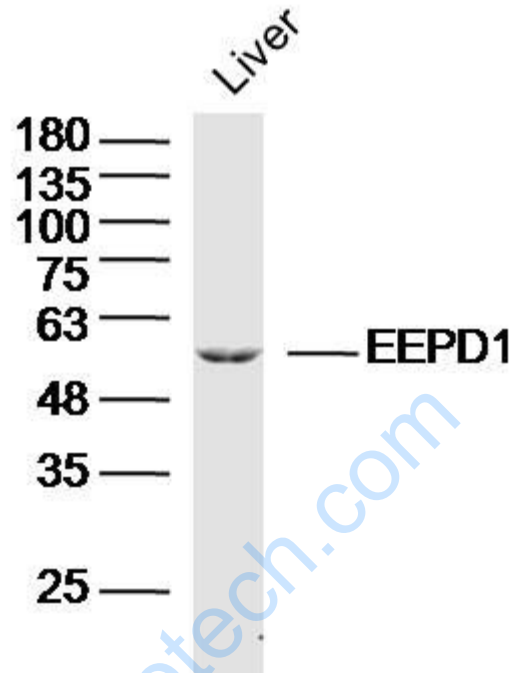
Sample: Small intestine (Mouse) Lysate at 40 ug

Primary: Anti-EEPD1 (SL14506R) at 1/300 dilution

Secondary: IRDye800CW Goat Anti-Rabbit IgG at 1/20000 dilution

Predicted band size: 62 kD

Observed band size: 60 kD



Sample: Liver (Mouse) Lysate at 40 ug

Primary: Anti-EEPD1 (SL14506R) at 1/300 dilution

Secondary: IRDye800CW Goat Anti-Rabbit IgG at 1/20000 dilution

Predicted band size: 62 kD

Observed band size: 60 kD