



Rabbit Anti-phospho-EEF1A2 (Ser358) antibody

SL14508R

Product Name:	phospho-EEF1A2(Ser358)
Chinese Name:	磷酸化翻译延伸因子EF-1 α 2抗体
Alias:	EEF1A2 (phospho S358);p-EEF1A2 (phospho S358); eEF1A 2; eEF1A-2; Eef1a2; EEF1AL; EF 1 alpha 2; EF-1-alpha-2; EF1A; EF1A2_HUMAN; Elongation factor 1 A 2; Elongation factor 1 alpha; Elongation factor 1 alpha 2; Elongation factor 1-alpha 2; Eukaryotic elongation factor 1 A-2; Eukaryotic translation elongation factor 1 alpha 2; HS1; OTTHUMP00000031776; Statin like; Statin S1; Statin-S1; STN; STNL.
Organism Species:	Rabbit
Clonality:	Polyclonal
React Species:	Human,Mouse,Rat,
Applications:	WB=1:500-2000ELISA=1:500-1000IHC-P=1:400-800IHC-F=1:400-800ICC=1:100-500IF=1:100-500(Paraffin sections need antigen repair) not yet tested in other applications. optimal dilutions/concentrations should be determined by the end user.
Molecular weight:	50kDa
Cellular localization:	The nucleus
Form:	Lyophilized or Liquid
Concentration:	1mg/ml
immunogen:	KLH conjugated Synthesised phosphopeptide derived from human EEF1A2 around the phosphorylation site of Ser358:GY(p-S)PV
Lsotype:	IgG
Purification:	affinity purified by Protein A
Storage Buffer:	0.01M TBS(pH7.4) with 1% BSA, 0.03% Proclin300 and 50% Glycerol.
Storage:	Store at -20 °C for one year. Avoid repeated freeze/thaw cycles. The lyophilized antibody is stable at room temperature for at least one month and for greater than a year when kept at -20°C. When reconstituted in sterile pH 7.4 0.01M PBS or diluent of antibody the antibody is stable for at least two weeks at 2-4 °C.
PubMed:	PubMed

This gene encodes an isoform of the alpha subunit of the elongation factor-1 complex, which is responsible for the enzymatic delivery of aminoacyl tRNAs to the ribosome. This isoform (alpha 2) is expressed in brain, heart and skeletal muscle, and the other isoform (alpha 1) is expressed in brain, placenta, lung, liver, kidney, and pancreas. This gene may be critical in the development of ovarian cancer. Alternatively spliced transcript variants encoding different isoforms have been found for this gene. [provided by RefSeq, Oct 2008]

Function:

This protein promotes the GTP-dependent binding of aminoacyl-tRNA to the A-site of ribosomes during protein biosynthesis.

Subcellular Location:

Nucleus.

Tissue Specificity:

Brain, heart, and skeletal muscle.

Similarity:

Belongs to the GTP-binding elongation factor family. EF-Tu/EF-1A subfamily.

SWISS:

Q05639

Gene ID:

1917

Database links:

[Entrez Gene: 1917](#) Human

[Entrez Gene: 13628](#) Mouse

[Entrez Gene: 24799](#) Rat

[Entrez Gene: 101109898](#) Sheep

[Entrez Gene: 380550](#) Xenopus laevis

[Omim: 602959](#) Human

[SwissProt: Q05639](#) Human

[SwissProt: P62631](#) Mouse

[SwissProt: P62632](#) Rat

Product Detail:

[Unigene: 433839](#) Human

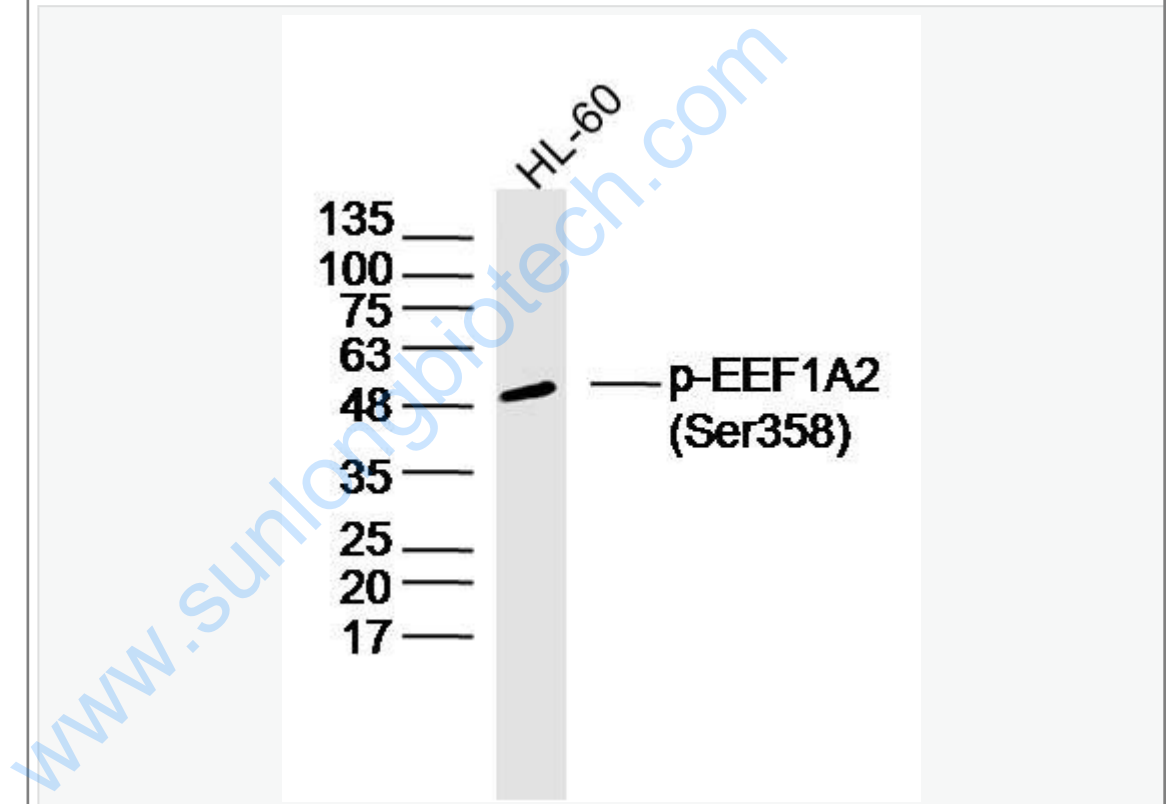
[Unigene: 2645](#) Mouse

[Unigene: 9764](#) Rat

Important Note:

This product as supplied is intended for research use only, not for use in human, therapeutic or diagnostic applications.

Picture:



Sample: HL-60 Cell (Human) Lysate at 40 ug

Primary: Anti- phospho-EEF1A2 (Ser358) (SL14508R) at 1/300 dilution

Secondary: IRDye800CW Goat Anti-Rabbit IgG at 1/20000 dilution

Predicted band size: 50 kD

Observed band size: 50 kD

