



## Rabbit Anti-EFCAB2 antibody

SL14509R

<b>Product Name:</b>	EFCAB2
<b>Chinese Name:</b>	EFCAB2蛋白抗体
<b>Alias:</b>	EF-CAB2; EF hand calcium binding domain 2; EF hand calcium binding domain containing protein 2; EFCAB 2; FLJ33608; EFCB2_HUMAN; MGC12458; RP11 290P14.1.
<b>Organism Species:</b>	Rabbit
<b>Clonality:</b>	Polyclonal
<b>React Species:</b>	Human,
<b>Applications:</b>	WB=1:500-2000ELISA=1:500-1000IHC-P=1:400-800IHC-F=1:400-800ICC=1:100-500IF=1:100-500 (Paraffin sections need antigen repair) not yet tested in other applications. optimal dilutions/concentrations should be determined by the end user.
<b>Molecular weight:</b>	30kDa
<b>Cellular localization:</b>	cytoplasmic
<b>Form:</b>	Lyophilized or Liquid
<b>Concentration:</b>	1mg/ml
<b>immunogen:</b>	KLH conjugated synthetic peptide derived from human EFCAB2:51-150/269
<b>Lsotype:</b>	IgG
<b>Purification:</b>	affinity purified by Protein A
<b>Storage Buffer:</b>	0.01M TBS(pH7.4) with 1% BSA, 0.03% Proclin300 and 50% Glycerol.
<b>Storage:</b>	Store at -20 °C for one year. Avoid repeated freeze/thaw cycles. The lyophilized antibody is stable at room temperature for at least one month and for greater than a year when kept at -20°C. When reconstituted in sterile pH 7.4 0.01M PBS or diluent of antibody the antibody is stable for at least two weeks at 2-4 °C.
<b>PubMed:</b>	<a href="#">PubMed</a>
<b>Product Detail:</b>	EFCAB2 contains two EF-hand domains. There are two known isoforms produced by alternative splicing. <b>Similarity:</b> Contains 2 EF-hand domains.

**SWISS:**  
Q5VUJ9

**Gene ID:**  
84288

**Database links:**

[Entrez Gene: 84288](#) Human

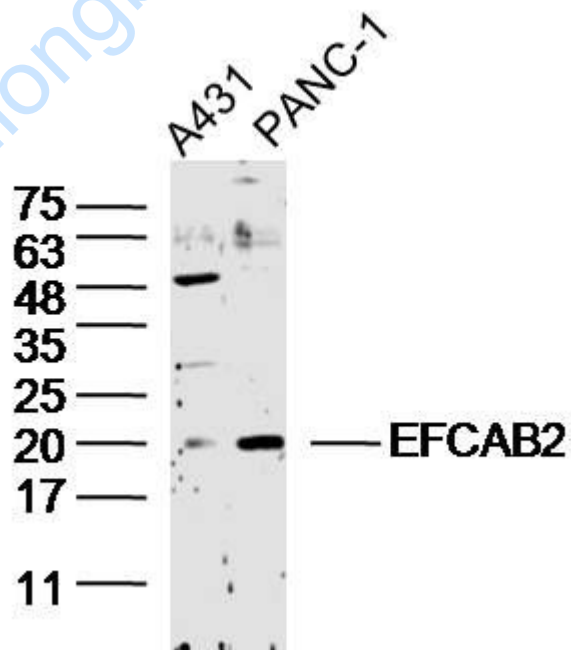
[GenBank: NM\\_032328](#) Human

[SwissProt: Q5VUJ9](#) Human

**Important Note:**

This product as supplied is intended for research use only, not for use in human, therapeutic or diagnostic applications.

**Picture:**



**Sample:**

A431 Cell (Human) Lysate at 40 ug

PANC-1 Cell (Human) Lysate at 40 ug

Primary: Anti- EFCAB2 (SL14509R) at 1/300 dilution

Secondary: IRDye800CW Goat Anti-Rabbit IgG at 1/20000 dilution

Predicted band size: 30 kD

Observed band size: 20 kD

[www.sunlongbiotech.com](http://www.sunlongbiotech.com)