



Rabbit Anti-EFEMP1 antibody

SL14516R

Product Name:	EFEMP1
Chinese Name:	原纤维蛋白样蛋白DHRD抗体
Alias:	DHRD; Doyne honeycomb retinal degeneration; DRAD; EFEMP 1; EFEMP1; EGF containing fibulin like extracellular matrix protein 1; EGF containing fibulin like extracellular matrix protein 1 precursor; EGF-containing fibulin-like extracellular matrix protein 1; Epidermal growth factor containing fibulin like extracellular matrix protein 1; Extracellular protein S1 5; Extracellular protein S1-5; FBLN 3; FBLN3; FBLN3_HUMAN; FBNL; FIBL 3; FIBL-3; FIBL3; Fibrillin like; Fibrillin like protein; Fibrillin-like protein; FIBULIN 3; Fibulin-3; Fibulin3; FLJ35535; Heat shock 70 KD protein 1; MGC111353; MLVT; MTLV; S1 5; T16 protein.
Organism Species:	Rabbit
Clonality:	Polyclonal
React Species:	Human,Mouse,Rat,
Applications:	WB=1:500-2000ELISA=1:500-1000IHC-P=1:400-800IHC-F=1:400-800ICC=1:100-500IF=1:100-500 (Paraffin sections need antigen repair) not yet tested in other applications. optimal dilutions/concentrations should be determined by the end user.
Molecular weight:	53kDa
Cellular localization:	cytoplasmic
Form:	Lyophilized or Liquid
Concentration:	1mg/ml
immunogen:	KLH conjugated synthetic peptide derived from human EFEMP1:401-493/493
Lsotype:	IgG
Purification:	affinity purified by Protein A
Storage Buffer:	0.01M TBS(pH7.4) with 1% BSA, 0.03% Proclin300 and 50% Glycerol.
Storage:	Store at -20 °C for one year. Avoid repeated freeze/thaw cycles. The lyophilized antibody is stable at room temperature for at least one month and for greater than a year when kept at -20°C. When reconstituted in sterile pH 7.4 0.01M PBS or diluent of antibody the antibody is stable for at least two weeks at 2-4 °C.
PubMed:	PubMed

This gene encodes a member of the fibulin family of extracellular matrix glycoproteins. Like all members of this family, the encoded protein contains tandemly repeated epidermal growth factor-like repeats followed by a C-terminus fibulin-type domain. This gene is upregulated in malignant gliomas and may play a role in the aggressive nature of these tumors. Mutations in this gene are associated with Doyme honeycomb retinal dystrophy. Alternatively spliced transcript variants that encode the same protein have been described.[provided by RefSeq, Nov 2009]

Function:

Binds EGFR, the EGF receptor, inducing EGFR autophosphorylation and the activation of downstream signaling pathways. May play a role in cell adhesion and migration. May function as a negative regulator of chondrocyte differentiation. In the olfactory epithelium, it may regulate glial cell migration, differentiation and the ability of glial cells to support neuronal neurite outgrowth.

Subcellular Location:

Secreted > extracellular space. Secreted > extracellular space > extracellular matrix. Localizes to the lamina propria underneath the olfactory epithelium.

Tissue Specificity:

In the eye, associated with photoreceptor outer and inner segment regions, the nerve fiber layer, outer nuclear layer and inner and outer plexiform layers of the retina.

DISEASE:

Defects in EFEMP1 are a cause of Doyme honeycomb retinal dystrophy (DHRD) [MIM:126600]; also known as malattia leventinese (MLVT) (ML). DHRD is an autosomal dominant disease characterized by yellow-white deposits known as drusen that accumulate beneath the retinal pigment epithelium.

Similarity:

Belongs to the fibulin family.
Contains 6 EGF-like domains.

SWISS:

Q12805

Gene ID:

2202

Database links:

[Entrez Gene: 2202](#) Human

[Entrez Gene: 216616](#) Mouse

[Entrez Gene: 305604](#) Rat

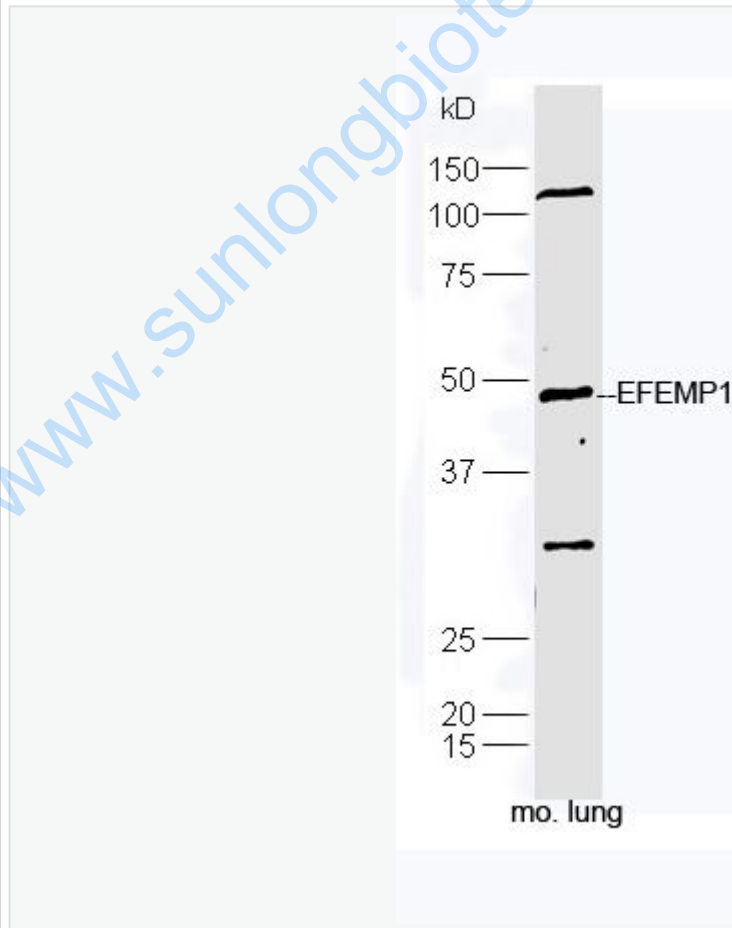
Product Detail:

[Omim: 601548](#) Human
[SwissProt: Q12805](#) Human
[SwissProt: Q8BPB5](#) Mouse
[SwissProt: O35568](#) Rat
[Unigene: 76224](#) Human
[Unigene: 44176](#) Mouse
[Unigene: 163265](#) Rat

Important Note:

This product as supplied is intended for research use only, not for use in human, therapeutic or diagnostic applications.

Picture:



Protein: lung(mouse) lysate at 40ug;

Primary: rabbit Anti-EFEMP1 (SL14516R) at 1:300;

Secondary: HRP conjugated Goat-Anti-rabbit IgG(SL14516R) at 1: 5000;

Predicted band size: 53 kD

Observed band size: 49 kD

www.sunlongbiotech.com