



## Rabbit Anti-PAFAH antibody

SL1451R

<b>Product Name:</b>	PAFAH
<b>Chinese Name:</b>	Lipoprotein磷脂酶A2抗体
<b>Alias:</b>	Lp-PLA2; PLA2G7; PAFAH; lipoprotein-associated phospholipase A2; Platelet-activating factor acetylhydrolase; PAF acetylhydrolase; PAF 2-acylhydrolase; LDL-associated phospholipase A2; LDL-PLA(2); 2-acetyl-1-alkylglycerophosphocholine esterase; 1-alkyl-2-acetyl-glycerophosphocholine esterase; PAFA_HUMAN.
<b>文献引用</b> PubMed :	<p><b>Specific References(2)</b> SL1451R has been referenced in 2 publications.</p> <p><b>[IF=3.71]</b>Rosing, Katharina, et al. "Everolimus Therapy Is Associated With Reduced Lipoprotein-Associated Phospholipase A&lt; sub&gt; 2(Lp-Pla&lt; sub&gt; 2) Activity And Oxidative Stress In Heart Transplant Recipients." Atherosclerosis (2013).<b>WB;Human.</b></p> <p><a href="#">PubMed:not posted yet</a></p> <p><b>[IF=2.93]</b>Wang, Gangqi, et al. "Nitro-oleic acid downregulates lipoprotein-associated phospholipase A2 expression via the p42/p44 MAPK and NF [kgr] B pathways." Scientific Reports 4 (2014).<b>WB;Human.</b></p> <p><a href="#">PubMed:24809325</a></p>
<b>Organism Species:</b>	Rabbit
<b>Clonality:</b>	Polyclonal
<b>React Species:</b>	Human,Mouse,Rat,Dog,
<b>Applications:</b>	WB=1:500-2000ELISA=1:500-1000IHC-P=1:400-800IHC-F=1:400-800IF=1:100-500 (Paraffin sections need antigen repair) not yet tested in other applications. optimal dilutions/concentrations should be determined by the end user.
<b>Molecular weight:</b>	48kDa
<b>Cellular localization:</b>	Extracellular matrixSecretory protein
<b>Form:</b>	Lyophilized or Liquid

<b>Concentration:</b>	1mg/ml
<b>immunogen:</b>	KLH conjugated synthetic peptide derived from human PAFAH:301-441/441
<b>Lsotype:</b>	IgG
<b>Purification:</b>	affinity purified by Protein A
<b>Storage Buffer:</b>	0.01M TBS(pH7.4) with 1% BSA, 0.03% Proclin300 and 50% Glycerol.
<b>Storage:</b>	Store at -20 °C for one year. Avoid repeated freeze/thaw cycles. The lyophilized antibody is stable at room temperature for at least one month and for greater than a year when kept at -20°C. When reconstituted in sterile pH 7.4 0.01M PBS or diluent of antibody the antibody is stable for at least two weeks at 2-4 °C.
<b>PubMed:</b>	<a href="#">PubMed</a>
<b>Product Detail:</b>	<p>This gene encodes platelet-activating factor acetylhydrolase isoform 2, a single-subunit intracellular enzyme that catalyzes the removal of the acetyl group at the SN-2 position of platelet-activating factor (identified as 1-O-alkyl-2-acetyl -sn-glycerol-3-phosphorylcholine). However, this lipase exhibits a broader substrate specificity than simply platelet activating factor. Two other isoforms of intracellular platelet-activating factor acetylhydrolase exist, and both are multi-subunit enzymes. Additionally, there is a single-subunit serum isoform of this enzyme.</p> <p><b>Function:</b> Modulates the action of platelet-activating factor (PAF) by hydrolyzing the sn-2 ester bond to yield the biologically inactive lyso-PAF. Has a specificity for substrates with a short residue at the sn-2 position. It is inactive against long-chain phospholipids.</p> <p><b>Subcellular Location:</b> Secreted, extracellular space.</p> <p><b>Tissue Specificity:</b> Plasma.</p> <p><b>DISEASE:</b> Platelet-activating factor acetylhydrolase deficiency (PAFAD) [MIM:614278]: An enzymatic deficiency that results in exacerbated bodily response to inflammatory agents. It can be associated with several disease states including inflammatory gastrointestinal disorders, asthma and atopy. Asthmatic individuals with PAFAD may manifest aggravated respiratory symptoms. Note=The disease is caused by mutations affecting the gene represented in this entry. Asthma (ASTHMA) [MIM:600807]: The most common chronic disease affecting children and young adults. It is a complex genetic disorder with a heterogeneous phenotype, largely attributed to the interactions among many genes and between these genes and the environment. It is characterized by recurrent attacks of paroxysmal dyspnea, with weezing due to spasmodic contraction of the bronchi. Note=Disease susceptibility is associated with variations affecting the gene represented in this entry. Atopic hypersensitivity (ATOPY) [MIM:147050]: A condition characterized by predisposition to develop hypersensitivity reactions. Atopic individuals can develop eczema, allergic rhinitis and allergic asthma. Note=Disease susceptibility is associated with variations affecting the gene represented in this entry.</p>

**Similarity:**

Belongs to the AB hydrolase superfamily. Lipase family.

**SWISS:**

Q13093

**Gene ID:**

7941

**Database links:**

[Entrez Gene: 7941](#)Human

[Olim: 601690](#)Human

[SwissProt: Q13093](#)Human

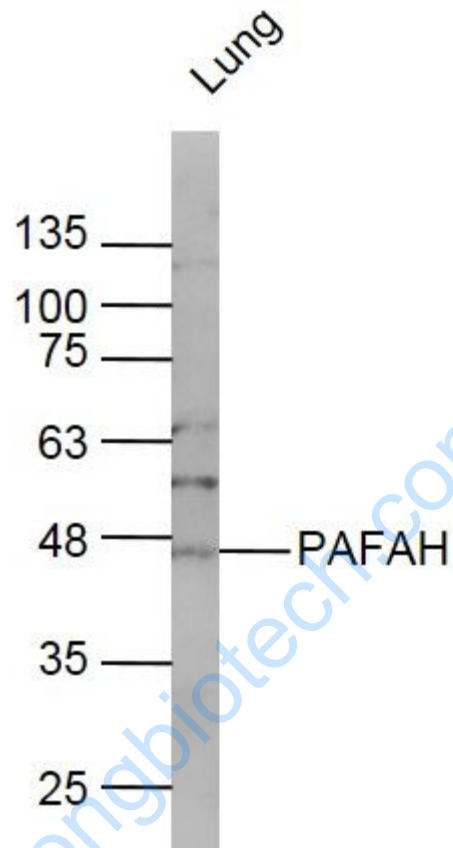
**Important Note:**

This product as supplied is intended for research use only, not for use in human, therapeutic or diagnostic applications.

Lipoprotein相关磷脂A2 (Lp-PLA2) 也称血浆血小板激活因子乙酰水解酶, 是介导氧化低密度Lipoprotein引起炎症和动脉粥样硬化的一个关键性酶。

Lipoprotein相关磷脂酶A2是磷脂酶A2超家族的一个成员,由成熟的巨噬细胞和lymphocyte合成和分泌,主要与低密度Lipoprotein结合,能水解低密度Lipoprotein上的氧化卵磷脂,生成促炎物质溶血卵磷脂和氧化型游离脂肪酸,促进动脉粥样硬化形成,经研究认为:抑制Lipoprotein相关磷脂酶A2活性可能有抗动脉粥样硬化的效应。

Picture:



Sample:

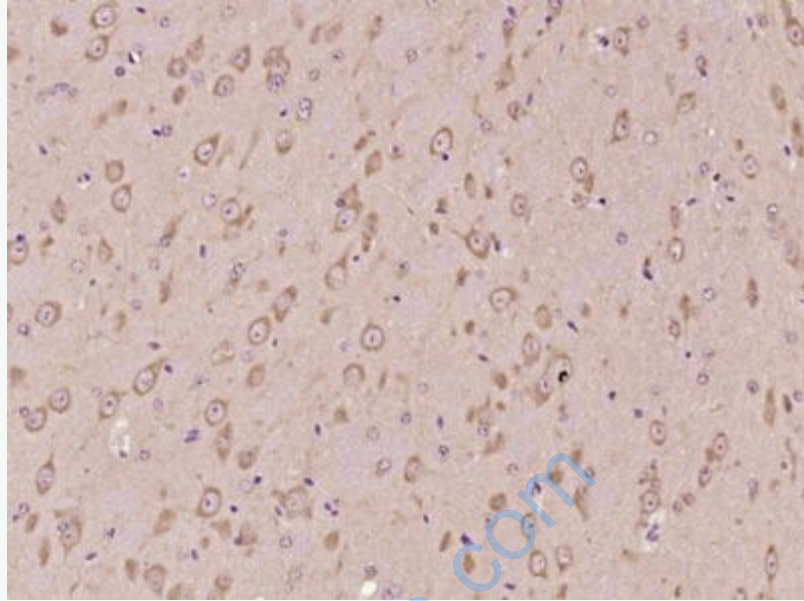
Lung (Rat) Lysate at 40 ug

Primary: Anti-PAFAH (SL1451R) at 1/300 dilution

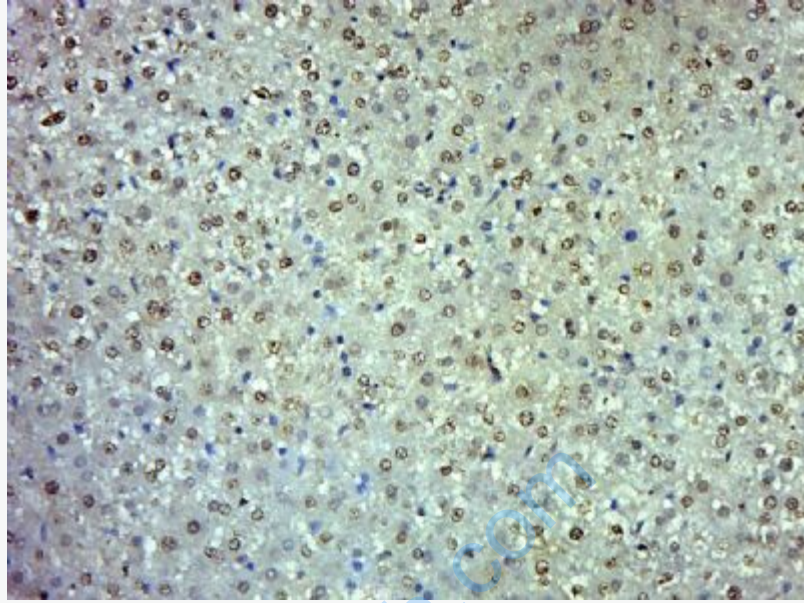
Secondary: IRDye800CW Goat Anti-Rabbit IgG at 1/20000 dilution

Predicted band size: 48 kD

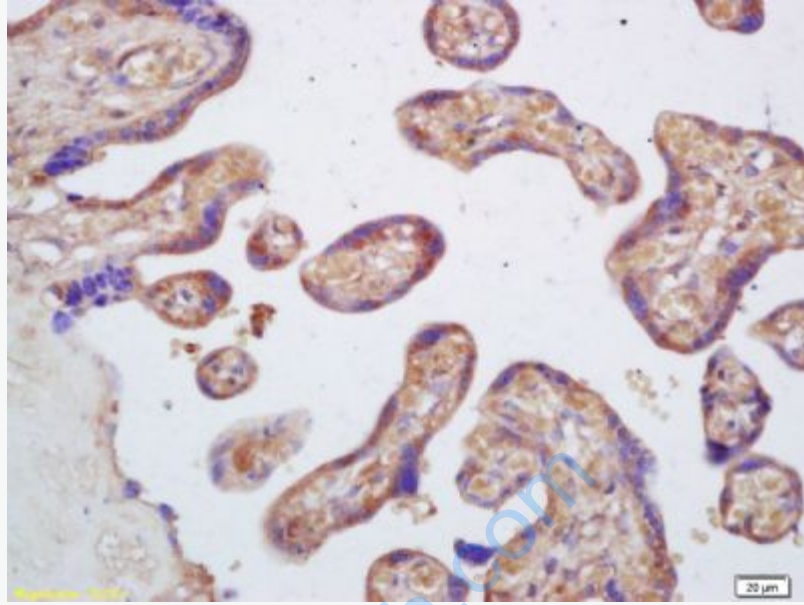
Observed band size: 48 kD



Paraformaldehyde-fixed, paraffin embedded (Mouse brain); Antigen retrieval by boiling in sodium citrate buffer (pH6.0) for 15min; Block endogenous peroxidase by 3% hydrogen peroxide for 20 minutes; Blocking buffer (normal goat serum) at 37°C for 30min; Antibody incubation with (PAFAH) Polyclonal Antibody, Unconjugated (SL1451R) at 1:400 overnight at 4°C, followed by operating according to SP Kit(Rabbit) (sp-0023) instructions and DAB staining.



Paraformaldehyde-fixed, paraffin embedded (Rat liver); Antigen retrieval by boiling in sodium citrate buffer (pH6.0) for 15min; Block endogenous peroxidase by 3% hydrogen peroxide for 20 minutes; Blocking buffer (normal goat serum) at 37°C for 30min; Antibody incubation with (PAFAH) Polyclonal Antibody, Unconjugated (SL1451R) at 1:500 overnight at 4°C, followed by a conjugated secondary (sp-0023) for 20 minutes and DAB staining.

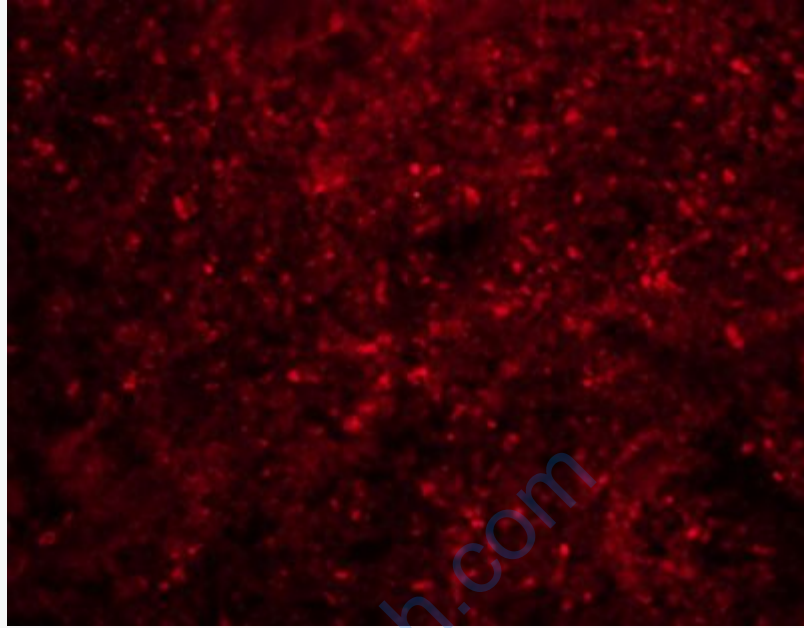


Tissue/cell: human placenta tissue; 4% Paraformaldehyde-fixed and paraffin-embedded;

Antigen retrieval: citrate buffer ( 0.01M, pH 6.0 ), Boiling bathing for 15min; Block endogenous peroxidase by 3% Hydrogen peroxide for 30min; Blocking buffer (normal goat serum,C-0005) at 37°C for 20 min;

Incubation: Anti-PAFAH2/Lp-PLA2 Polyclonal Antibody, Unconjugated(SL1451R) 1:200, overnight at 4°C, followed by conjugation to the secondary antibody(SP-0023) and DAB(C-0010) staining





Tissue/cell: rat spleen tissue;4% Paraformaldehyde-fixed and paraffin-embedded;  
Antigen retrieval: citrate buffer ( 0.01M, pH 6.0 ), Boiling bathing for 15min;  
Blocking buffer (normal goat serum,C-0005) at 37°C for 20 min;  
Incubation: Anti-PAFAH2 Polyclonal Antibody, Unconjugated(SL1451R) 1:200,  
overnight at 4°C; The secondary antibody was Goat Anti-Rabbit IgG, Cy3  
conjugated(SL1451R)used at 1:200 dilution for 40 minutes at 37°C.