



## Rabbit Anti-ERp57 antibody

SL14629R

<b>Product Name:</b>	ERp57
<b>Chinese Name:</b>	内质网蛋白57抗体
<b>Alias:</b>	ERp57/ERp60; 58 kDa glucose regulated protein; 58 kDa glucose-regulated protein; 58 kDa microsomal protein; Disulfide isomerase ER 60; Disulfide isomerase ER-60; Endoplasmic reticulum resident protein 57; Endoplasmic reticulum resident protein 60; ER p57; ER protein 57; ER protein 60; ERp 57; ERp57; ERp60; ERp61; Glucose Regulated Protein 58 Kd; GRP 57; GRP 58; GRP57; GRP58; HsT17083; P58; PDIA 3; PDIA3; PDIA3_HUMAN; Phospholipase C alpha; PI PLC; Protein disulfide isomerase A3; Protein disulfide isomerase family A member 3; Protein disulfide-isomerase A3.
<b>Organism Species:</b>	Rabbit
<b>Clonality:</b>	Polyclonal
<b>React Species:</b>	Human,Mouse,Rat,Chicken,Rabbit,
<b>Applications:</b>	WB=1:500-2000ELISA=1:500-1000IHC-P=1:400-800IHC-F=1:400-800ICC=1:100-500IF=1:100-500 (Paraffin sections need antigen repair) not yet tested in other applications. optimal dilutions/concentrations should be determined by the end user.
<b>Molecular weight:</b>	54kDa
<b>Cellular localization:</b>	cytoplasmic
<b>Form:</b>	Lyophilized or Liquid
<b>Concentration:</b>	1mg/ml
<b>immunogen:</b>	KLH conjugated synthetic peptide derived from human ERp57:351-450/505
<b>Lsotype:</b>	IgG
<b>Purification:</b>	affinity purified by Protein A
<b>Storage Buffer:</b>	0.01M TBS(pH7.4) with 1% BSA, 0.03% Proclin300 and 50% Glycerol.
<b>Storage:</b>	Store at -20 °C for one year. Avoid repeated freeze/thaw cycles. The lyophilized antibody is stable at room temperature for at least one month and for greater than a year when kept at -20°C. When reconstituted in sterile pH 7.4 0.01M PBS or diluent of antibody the antibody is stable for at least two weeks at 2-4 °C.
<b>PubMed:</b>	<a href="#">PubMed</a>
<b>Product Detail:</b>	This gene encodes a protein of the endoplasmic reticulum that interacts with lectin

chaperones calreticulin and calnexin to modulate folding of newly synthesized glycoproteins. The protein was once thought to be a phospholipase; however, it has been demonstrated that the protein actually has protein disulfide isomerase activity. It is thought that complexes of lectins and this protein mediate protein folding by promoting formation of disulfide bonds in their glycoprotein substrates. [provided by RefSeq, Jul 2008]

**Subcellular Location:**

Endoplasmic reticulum lumen. Melanosome. Identified by mass spectrometry in melanosome fractions from stage I to stage IV.

**Tissue Specificity:**

Detected in the flagellum and head region of spermatozoa (at protein level).

**Similarity:**

Belongs to the protein disulfide isomerase family.  
Contains 2 thioredoxin domains.

**SWISS:**

P30101

**Gene ID:**

2923

**Database links:**

[Entrez Gene: 2923](#) Human

[Entrez Gene: 14827](#) Mouse

[Entrez Gene: 100328685](#) Rabbit

[Entrez Gene: 29468](#) Rat

[Omim: 602046](#) Human

[SwissProt: P30101](#) Human

[SwissProt: P27773](#) Mouse

[SwissProt: P11598](#) Rat

[Unigene: 591095](#) Human

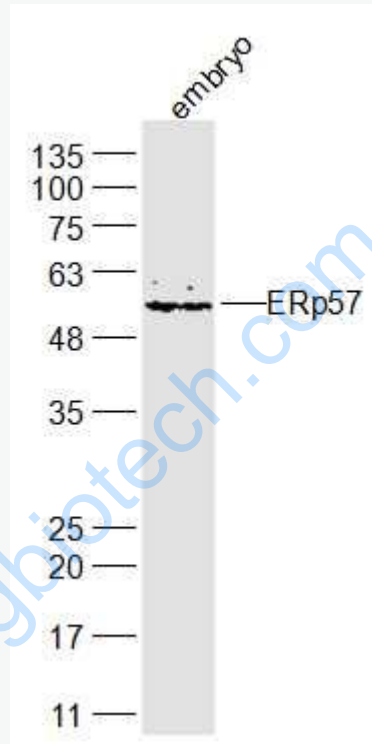
[Unigene: 263177](#) Mouse

[Unigene: 11527](#) Rat

**Important Note:**

This product as supplied is intended for research use only, not for use in human, therapeutic or diagnostic applications.

**Picture:**



Sample:

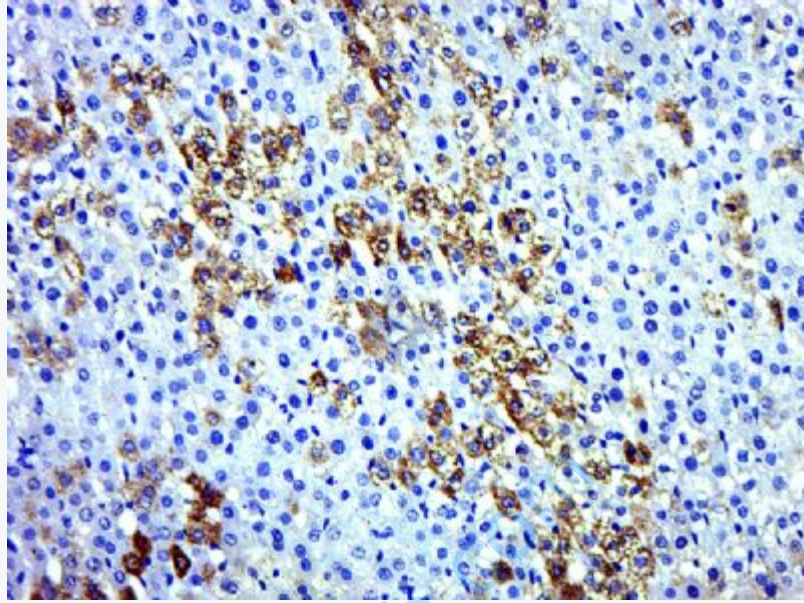
embryo (Mouse) Lysate at 40 ug

Primary: Anti-ERp57 (SL14629R) at 1/300 dilution

Secondary: IRDye800CW Goat Anti-Rabbit IgG at 1/20000 dilution

Predicted band size: 54 kD

Observed band size: 54 kD



Paraformaldehyde-fixed, paraffin embedded (Rat liver); Antigen retrieval by boiling in sodium citrate buffer (pH6.0) for 15min; Block endogenous peroxidase by 3% hydrogen peroxide for 20 minutes; Blocking buffer (normal goat serum) at 37°C for 30min; Antibody incubation with (ERp57) Polyclonal Antibody, Unconjugated (SL14629R) at 1:500 overnight at 4°C, followed by a conjugated secondary (sp-0023) for 20 minutes and DAB staining.