



## Rabbit Anti-ETS2.3 antibody

SL14641R

<b>Product Name:</b>	ETS2.3
<b>Chinese Name:</b>	ETS2.3蛋白抗体
<b>Alias:</b>	oncogene ETS2; ETS2_HUMAN; vETS avian erythroblastosis virus E2 oncogene homolog 2; vETS erythroblastosis virus E26 oncogene homolog 2; E26 avian leukemia oncogene 2, 3' domain; E26 avian leukemia oncogene 2, 3' domain, isoform CRA_a.
<b>Organism Species:</b>	Rabbit
<b>Clonality:</b>	Polyclonal
<b>React Species:</b>	Human,Mouse,Rat,Dog,Pig,Horse,Guinea Pig,
<b>Applications:</b>	WB=1:500-2000ELISA=1:500-1000IHC-P=1:400-800IHC-F=1:400-800ICC=1:100-500IF=1:100-500 (Paraffin sections need antigen repair) not yet tested in other applications. optimal dilutions/concentrations should be determined by the end user.
<b>Molecular weight:</b>	55kDa
<b>Cellular localization:</b>	The nucleusThe cell membrane
<b>Form:</b>	Lyophilized or Liquid
<b>Concentration:</b>	1mg/ml
<b>immunogen:</b>	KLH conjugated synthetic peptide derived from human ETS2.3:301-400/469
<b>Lsotype:</b>	IgG
<b>Purification:</b>	affinity purified by Protein A
<b>Storage Buffer:</b>	0.01M TBS(pH7.4) with 1% BSA, 0.03% Proclin300 and 50% Glycerol.
<b>Storage:</b>	Store at -20 °C for one year. Avoid repeated freeze/thaw cycles. The lyophilized antibody is stable at room temperature for at least one month and for greater than a year when kept at -20°C. When reconstituted in sterile pH 7.4 0.01M PBS or diluent of antibody the antibody is stable for at least two weeks at 2-4 °C.
<b>PubMed:</b>	<a href="#">PubMed</a>
<b>Product Detail:</b>	This gene encodes a transcription factor which regulates genes involved in development and apoptosis. The encoded protein is also a protooncogene and shown to be involved in regulation of telomerase. A pseudogene of this gene is located on the X chromosome. Alternative splicing results in multiple transcript variants. [provided by RefSeq, Jan 2012]

**Function:**

ETS2.3 is an oncogene found on human chromosome 21. It belongs to the ETS family, contains 1 ETS domain and 1 pointed (PNT) domain.

**Subcellular Location:**

Nuclear

**Similarity:**

Belongs to the ETS family.

Contains 1 ETS DNA-binding domain.

Contains 1 PNT (pointed) domain.

**SWISS:**

P15036

**Gene ID:**

2114

**Database links:**

[Entrez Gene: 2114](#) Human

[Omim: 164740](#) Human

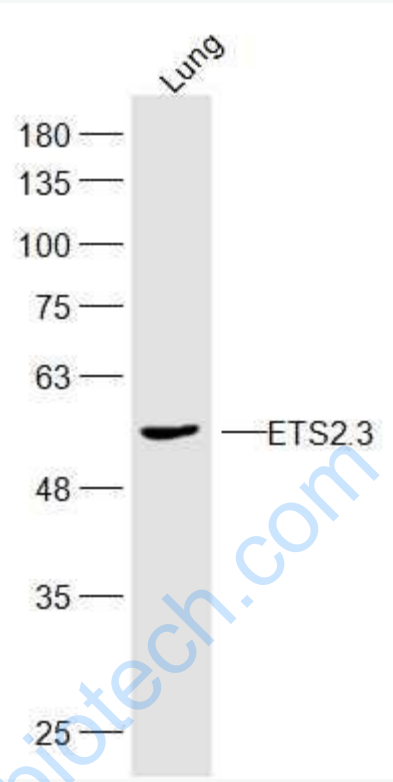
[SwissProt: P15036](#) Human

[Unigene: 517296](#) Human

**Important Note:**

This product as supplied is intended for research use only, not for use in human, therapeutic or diagnostic applications.

Picture:



Sample:

Lung (Mouse) Lysate at 40 ug

Primary: Anti-ETS2.3 (SL14641R) at 1/300 dilution

Secondary: IRDye800CW Goat Anti-Rabbit IgG at 1/20000 dilution

Predicted band size: 55 kD

Observed band size: 55 kD