



Rabbit Anti-EVPLL antibody

SL14651R

| | |
|-------------------------------|--|
| Product Name: | EVPLL |
| Chinese Name: | EVPLL蛋白抗体 |
| Alias: | Envoplakin like; Envoplakin-like protein; EVPLL; EVPLL HUMAN; |
| Organism Species: | Rabbit |
| Clonality: | Polyclonal |
| React Species: | Human, |
| Applications: | ELISA=1:500-1000IHC-P=1:400-800IHC-F=1:400-800ICC=1:100-500IF=1:100-500 (Paraffin sections need antigen repair) not yet tested in other applications. optimal dilutions/concentrations should be determined by the end user. |
| Molecular weight: | 34kDa |
| Cellular localization: | cytoplasmicThe cell membrane |
| Form: | Lyophilized or Liquid |
| Concentration: | 1mg/ml |
| immunogen: | KLH conjugated synthetic peptide derived from human EVPLL:101-200/301 |
| Lsotype: | IgG |
| Purification: | affinity purified by Protein A |
| Storage Buffer: | 0.01M TBS(pH7.4) with 1% BSA, 0.03% Proclin300 and 50% Glycerol. |
| Storage: | Store at -20 °C for one year. Avoid repeated freeze/thaw cycles. The lyophilized antibody is stable at room temperature for at least one month and for greater than a year when kept at -20°C. When reconstituted in sterile pH 7.4 0.01M PBS or diluent of antibody the antibody is stable for at least two weeks at 2-4 °C. |
| PubMed: | PubMed |
| Product Detail: | EVPLL (envoplakin-like protein) is a 301 amino acid protein that belongs to the plakin or cytolinker family. The gene encoding EVPLL maps to human chromosome 17, which comprises over 2.5% of the human genome and encodes over 1,200 genes. Two key tumor suppressor genes are associated with chromosome 17, namely, p53 and BRCA1. Tumor suppressor p53 is necessary for maintenance of cellular genetic integrity by moderating cell fate through DNA repair versus cell death. Malfunction or loss of p53 expression is associated with malignant cell growth and Li-Fraumeni syndrome. Like |

p53, BRCA1 is directly involved in DNA repair, though specifically it is recognized as a genetic determinant of early onset breast cancer and predisposition to cancers of the ovary, colon, prostate gland and fallopian tubes.

Similarity:

Belongs to the plakin or cytolinker family.

SWISS:

A8MZ36

Gene ID:

645027

Database links:

[Entrez Gene: 645027](#) Human

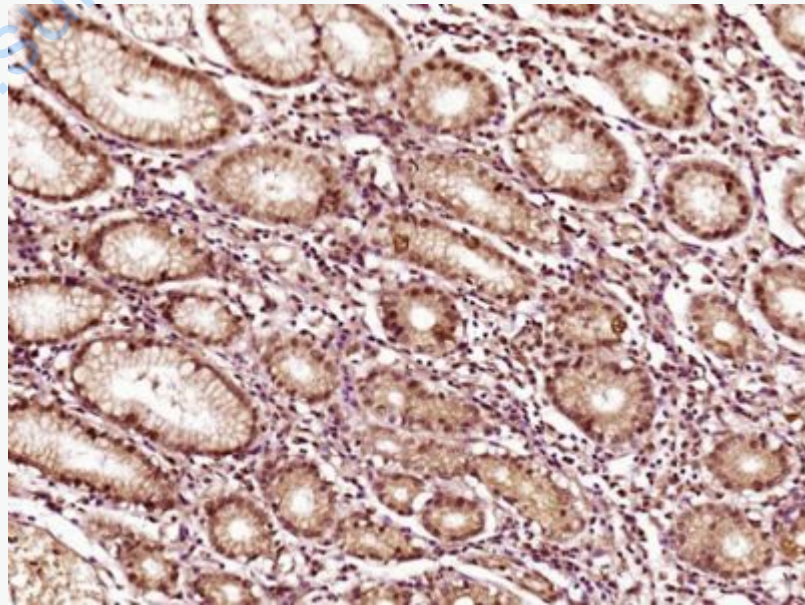
[SwissProt: A8MZ36](#) Human

[Unigene: 462400](#) Human

Important Note:

This product as supplied is intended for research use only, not for use in human, therapeutic or diagnostic applications.

Picture:



Paraformaldehyde-fixed, paraffin embedded (Human stomach carcinoma); Antigen

retrieval by boiling in sodium citrate buffer (pH6.0) for 15min; Block endogenous peroxidase by 3% hydrogen peroxide for 20 minutes; Blocking buffer (normal goat serum) at 37°C for 30min; Antibody incubation with (EVPLL) Polyclonal Antibody, Unconjugated (SL14651R) at 1:500 overnight at 4°C, followed by a conjugated secondary (sp-0023) for 20 minutes and DAB staining.