



## Rabbit Anti-CC16 antibody

SL1487R

<b>Product Name:</b>	CC16
<b>Chinese Name:</b>	克拉拉细胞蛋白抗体
<b>Alias:</b>	Clara cell protein 16; SCGB1A1; CC10; CCPBP; CCSP; UGB; UP-1; UP1; Secretoglobin, family 1A, member 1; PCB-binding protein; PCB-BP; UG; uteroglobin; Clara cell phospholipid-binding; Clara cells 10 kDa secretory protein; Urinary protein 1; Urine protein 1; UTER_MOUSE.
<b>文献引用</b> <b>PubMed</b> :	<p><b>Specific References(1)</b> SL1487R has been referenced in 1 publications.</p> <p><b>[IF=3.12]</b>Mori, Gentaro, et al. "The genes Scgb1a1, Lpo and Gbp2 characteristically expressed in peri-implant epithelium of rats." Clinical Oral Implants Research (2015).<b>IHC-P;Rat.</b></p> <p style="text-align: right;">PubMed:25864924</p>
<b>Organism Species:</b>	Rabbit
<b>Clonality:</b>	Polyclonal
<b>React Species:</b>	Mouse,Rat,
<b>Applications:</b>	WB=1:500-2000ELISA=1:500-1000IHC-P=1:400-800IHC-F=1:400-800IF=1:100-500 (Paraffin sections need antigen repair) not yet tested in other applications. optimal dilutions/concentrations should be determined by the end user.
<b>Molecular weight:</b>	8.4kDa
<b>Cellular localization:</b>	Secretory protein
<b>Form:</b>	Lyophilized or Liquid
<b>Concentration:</b>	1mg/ml
<b>immunogen:</b>	KLH conjugated synthetic peptide derived from mouse CC16:21-86/96
<b>Lsotype:</b>	IgG
<b>Purification:</b>	affinity purified by Protein A
<b>Storage Buffer:</b>	0.01M TBS(pH7.4) with 1% BSA, 0.03% Proclin300 and 50% Glycerol.
<b>Storage:</b>	Store at -20 °C for one year. Avoid repeated freeze/thaw cycles. The lyophilized

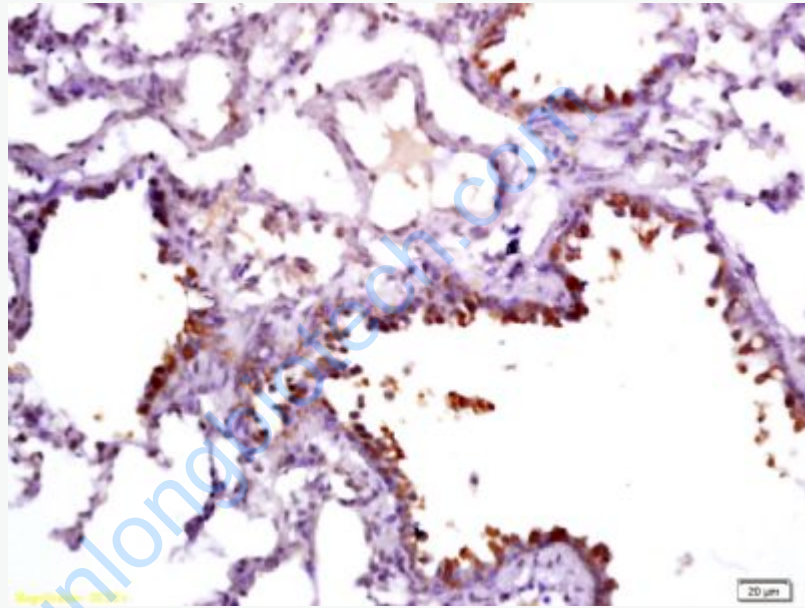
	antibody is stable at room temperature for at least one month and for greater than a year when kept at -20°C. When reconstituted in sterile pH 7.4 0.01M PBS or diluent of antibody the antibody is stable for at least two weeks at 2-4 °C.
<b>PubMed:</b>	<a href="#">PubMed</a>
<b>Product Detail:</b>	<p>This gene encodes a member of the secretoglobin family of small secreted proteins. The encoded protein has been implicated in numerous functions including anti-inflammation, inhibition of phospholipase A2 and the sequestering of hydrophobic ligands. Defects in this gene are associated with a susceptibility to asthma. [provided by RefSeq].</p> <p><b>Function:</b> Binds phosphatidylcholine, phosphatidylinositol, polychlorinated biphenyls (PCB) and weakly progesterone, potent inhibitor of phospholipase A2.</p> <p><b>Subunit:</b> Homodimer; antiparallel disulfide-linked.</p> <p><b>Subcellular Location:</b> Secreted.</p> <p><b>Tissue Specificity:</b> Clara cells (nonciliated cells of the surface epithelium of the pulmonary airways).</p> <p><b>Similarity:</b> Belongs to the secretoglobin family.</p> <p><b>SWISS:</b> Q06318</p> <p><b>Gene ID:</b> 7356</p> <p><b>Database links:</b>  <a href="#">Entrez Gene: 7356</a>Human  <a href="#">Entrez Gene: 22287</a>Mouse  <a href="#">Entrez Gene: 25575</a>Rat  <a href="#">Omim: 192020</a>Human  <a href="#">SwissProt: P11684</a>Human  <a href="#">SwissProt: Q06318</a>Mouse  <a href="#">SwissProt: P17559</a>Rat  <a href="#">Unigene: 523732</a>Human  <a href="#">Unigene: 2258</a>Mouse</p>

[Unigene: 2206Rat](#)

**Important Note:**

This product as supplied is intended for research use only, not for use in human, therapeutic or diagnostic applications.

Clara细胞分泌蛋白(CC16)具有明显的抗炎作用.



**Picture:**

Tissue/cell: rat lung tissue; 4% Paraformaldehyde-fixed and paraffin-embedded;

Antigen retrieval: citrate buffer ( 0.01M, pH 6.0 ), Boiling bathing for 15min; Block endogenous peroxidase by 3% Hydrogen peroxide for 30min; Blocking buffer (normal goat serum,C-0005) at 37°C for 20 min;

Incubation: Anti-CC16/CCSP Polyclonal Antibody, Unconjugated(SL1487R) 1:200, overnight at 4°C, followed by conjugation to the secondary antibody(SP-0023) and DAB(C-0010) staining