



Rabbit Anti-FAM210B antibody

SL14887R

Product Name:	FAM210B
Chinese Name:	FAM210B蛋白抗体
Alias:	5A3; C20orf108; dJ1167H4.1; DKFZP434A1114; Family with sequence similarity 210, member B; PSEC0265; Transmembrane protein C20orf108.
Organism Species:	Rabbit
Clonality:	Polyclonal
React Species:	Human,Mouse,Rat,Chicken,Dog,Pig,Cow,Horse,Rabbit,Sheep,
Applications:	WB=1:500-2000ELISA=1:500-1000IHC-P=1:400-800IHC-F=1:400-800ICC=1:100-500IF=1:100-500 (Paraffin sections need antigen repair) not yet tested in other applications. optimal dilutions/concentrations should be determined by the end user.
Molecular weight:	20kDa
Cellular localization:	The cell membrane
Form:	Lyophilized or Liquid
Concentration:	1mg/ml
immunogen:	KLH conjugated synthetic peptide derived from human FAM210B:101-192/192
Lsotype:	IgG
Purification:	affinity purified by Protein A
Storage Buffer:	0.01M TBS(pH7.4) with 1% BSA, 0.03% Proclin300 and 50% Glycerol.
Storage:	Store at -20 °C for one year. Avoid repeated freeze/thaw cycles. The lyophilized antibody is stable at room temperature for at least one month and for greater than a year when kept at -20°C. When reconstituted in sterile pH 7.4 0.01M PBS or diluent of antibody the antibody is stable for at least two weeks at 2-4 °C.
PubMed:	PubMed
Product Detail:	C20orf108 is a 192 amino acid multi-pass membrane protein that contains one DUF1279 domain. C20orf108 is encoded by a gene located on human chromosome 20q13.2. Representing about 2% of human DNA, chromosome 20 consists of approximately 63 million bases and 600 genes. Chromosome 20 contains a region with numerous genes expressed in the epididymis, which are thought to be important for seminal production. The PRNP gene encoding the prion protein associated with spongiform

encephalopathies, like Creutzfeldt-Jakob disease, is found on chromosome 20. Amyotrophic lateral sclerosis, spinal muscular atrophy, ring chromosome 20 epilepsy syndrome and Alagille syndrome are also associated with chromosome 20. The C20orf108 gene product has been provisionally designated C20orf108 pending further characterization.

Subcellular Location:

Membrane; Multi-pass membrane protein.

Similarity:

Belongs to the FAM210 family.

Contains 1 DUF1279 domain.

SWISS:

Q96KR6

Gene ID:

116151

Database links:

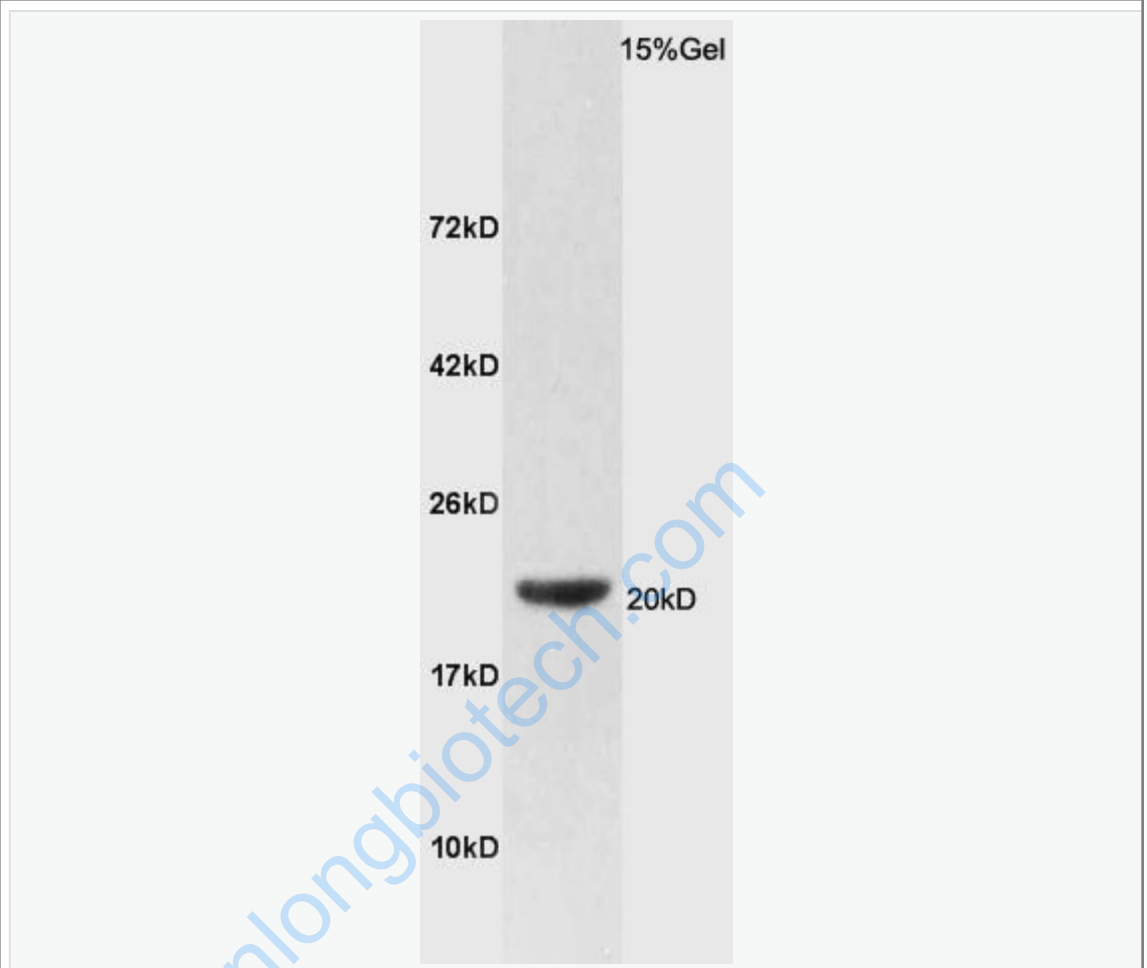
[Entrez Gene: 116151](#) Human

[SwissProt: Q96KR6](#) Human

Important Note:

This product as supplied is intended for research use only, not for use in human, therapeutic or diagnostic applications.

Picture:



Protein: lung(rat) lysates at 30ug;

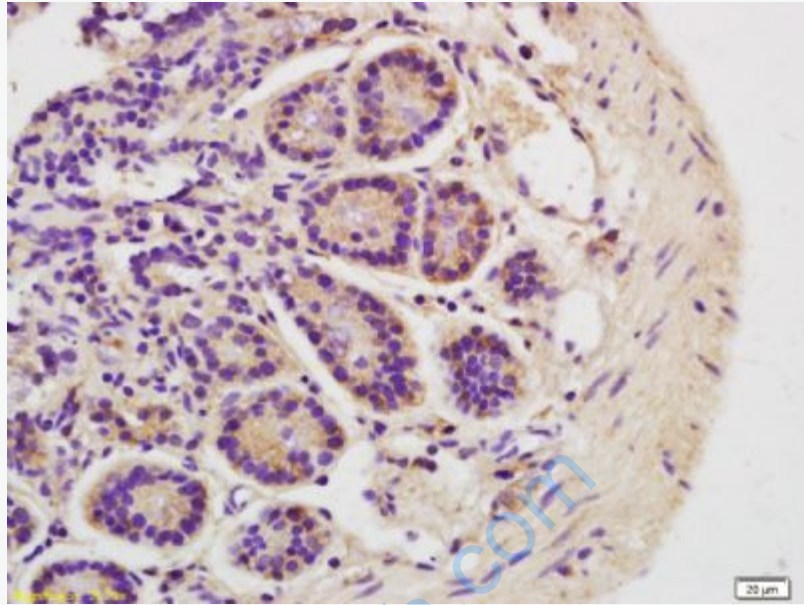
Primary: Anti-FAM210B (SL14887R) at 1:200;

Secondary: HRP conjugated Goat Anti-Rabbit IgG(SL14887R) at 1: 3000;

ECL excited the fluorescence;

Predicted band size : 20kD

Observed band size : 20kD



Tissue/cell: mouse intestine tissue; 4% Paraformaldehyde-fixed and paraffin-embedded;

Antigen retrieval: citrate buffer (0.01M, pH 6.0), Boiling bathing for 15min; Block endogenous peroxidase by 3% Hydrogen peroxide for 30min; Blocking buffer (normal goat serum,C-0005) at 37°C for 20 min;

Incubation: Anti-FAM210B Polyclonal Antibody, Unconjugated(SL14887R) 1:200, overnight at 4°C, followed by conjugation to the secondary antibody(SP-0023) and DAB(C-0010) staining