


Rabbit Anti-OCLN antibody

SL1495R

Product Name:	OCLN
Chinese Name:	紧密连接蛋白抗体
Alias:	Occludin, Occludin-1; Occludin1; Occludin 1; FLJ08163; BLCPMG; FLJ18079; FLJ77961; FLJ94056; MGC34277; Occludin; OCLN; OCLN_HUMAN; Tight junction protein occludin.
文献引用 	<p>Specific References(6) SL1495R has been referenced in 6 publications.</p> <p>[IF=2.46]Pan, Li, et al. "Effects of Soybean Agglutinin on Mechanical Barrier Function and Tight Junction Protein Expression in Intestinal Epithelial Cells from Piglets." International Journal of Molecular Sciences 14.11 (2013): 21689-21704.Pig. PubMed:24189218</p> <p>[IF=2.03]Gu, Yan-ting, et al. "Calcium-activated potassium channel activator down-regulated the expression of tight junction protein in brain tumor model in rats." Neuroscience letters 493.3 (2011): 140-144.WB;Rat. PubMed:21334421</p> <p>[IF=2.46]Zhao, Yuan, et al. "β-Conglycinin Reduces the Tight Junction Occludin and ZO-1 Expression in IPEC-J2." International Journal of Molecular Sciences 15.2 (2014): 1915-1926.Pig. PubMed:24473141</p> <p>[IF=2.73]Sun, Yan-Na, et al. "Effects of insulin combined with idebenone on blood-brain barrier permeability in diabetic rats." Journal of Neuroscience Research (2014).WB;Rat. PubMed:25421718</p>

	<p>[IF=2.71]Guo, Xiaoling, et al. "Matrigel and Activin A promote cell-cell contact and anti-apoptotic activity in cultured human retinal pigment epithelium cells." <i>Experimental Eye Research</i> (2016).IF(ICC);Human.</p> <p style="text-align: right;">PubMed:27130547</p> <p>[IF=2.86]Zhao, Yuan, et al. "Effects of soybean agglutinin on intestinal barrier permeability and tight junction protein expression in weaned piglets." <i>International journal of molecular sciences</i> 12.12 (2011): 8502-8512.WB, IHC-P;Pig.</p> <p style="text-align: right;">PubMed: 22272087</p>
Organism Species:	Rabbit
Clonality:	Polyclonal
React Species:	Human,Mouse,Rat,Dog,Pig,Cow,Horse,Guinea Pig,
Applications:	WB=1:500-2000ELISA=1:500-1000Flow-Cyt=3µg/Test not yet tested in other applications. optimal dilutions/concentrations should be determined by the end user.
Molecular weight:	57kDa
Cellular localization:	The cell membrane
Form:	Lyophilized or Liquid
Concentration:	1mg/ml
immunogen:	KLH conjugated synthetic peptide derived from mouse OCLN:431-522/522<Cytoplasmic>
Lsotype:	IgG
Purification:	affinity purified by Protein A
Storage Buffer:	0.01M TBS(pH7.4) with 1% BSA, 0.03% Proclin300 and 50% Glycerol.
Storage:	Store at -20 °C for one year. Avoid repeated freeze/thaw cycles. The lyophilized antibody is stable at room temperature for at least one month and for greater than a year when kept at -20°C. When reconstituted in sterile pH 7.4 0.01M PBS or diluent of antibody the antibody is stable for at least two weeks at 2-4 °C.
PubMed:	PubMed
Product Detail:	<p>This gene encodes an integral membrane protein which is located at tight junctions. This protein may be involved in the formation and maintenance of the tight junction. The possibility of several alternatively spliced products has been suggested but the full nature of these products has not been described. [provided by RefSeq].</p> <p>Function: May play a role in the formation and regulation of the tight junction (TJ) paracellular permeability barrier.</p> <p>Subunit: Interacts with TJP1/ZO1 and with VAPA.</p> <p>Subcellular Location: Membrane; Multi-pass membrane protein. Cell junction, tight junction.</p>

Tissue Specificity:

Localized at tight junctions of both epithelial and endothelial cells. Highly expressed in kidney. Not detected in testis.

Post-translational modifications:

Phosphorylated upon DNA damage, probably by ATM or ATR. Dephosphorylated by PTPRJ. May be phosphorylated by PKC during translocation to cell-cell contacts.

Similarity:

Belongs to the ELL/occludin family.
Contains 1 MARVEL domain.

SWISS:

Q61146

Gene ID:

18260

Database links:

[Entrez Gene: 18260](#)Mouse

[Entrez Gene: 100506658](#)Human

[Entrez Gene: 397236](#)Pig

[Entrez Gene: 83497](#)Rat

[Entrez Gene: 403844](#)Dog

[Oimim: 602876](#)Human

[SwissProt: Q28269](#)Dog

[SwissProt: Q16625](#)Human

[SwissProt: Q61146](#)Mouse

[SwissProt: Q6P6T5](#)Rat

[Unigene: 592605](#)Human

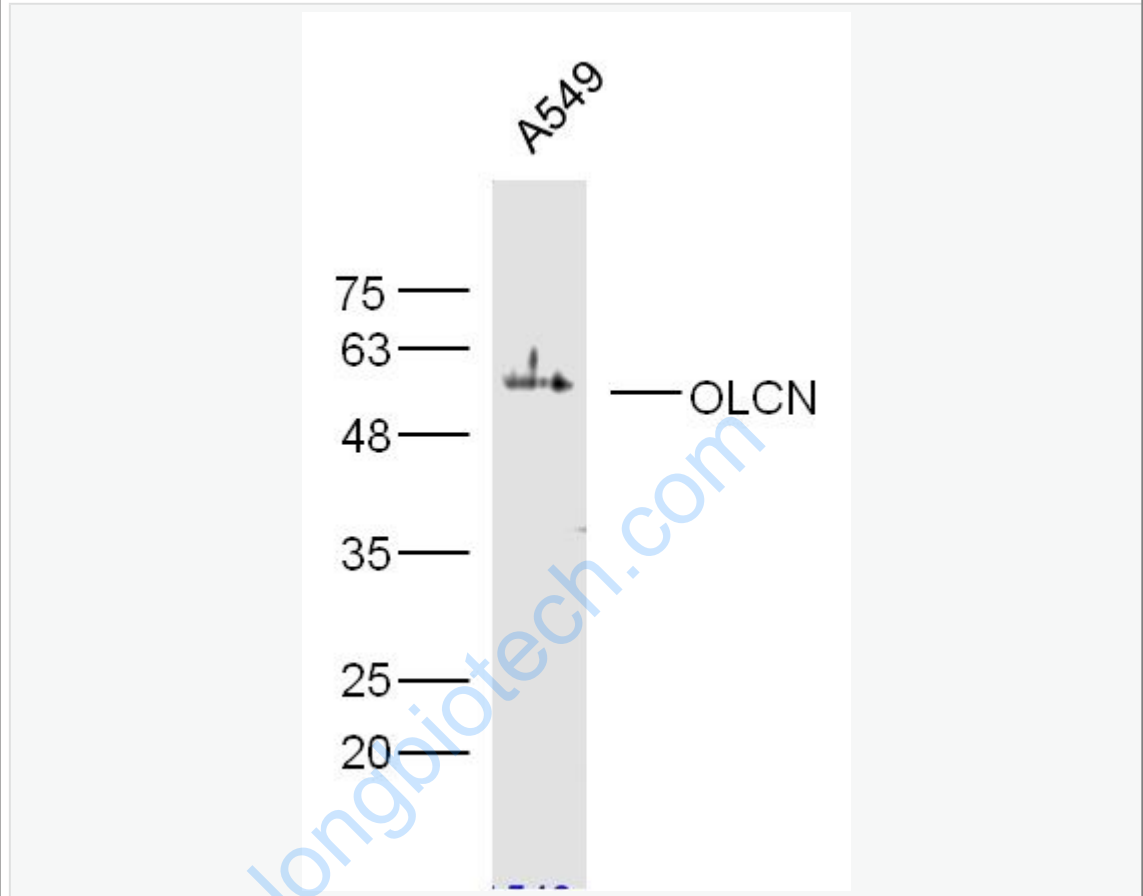
[Unigene: 4807](#)Mouse

[Unigene: 31429](#)Rat

Important Note:

This product as supplied is intended for research use only, not for use in human, therapeutic or diagnostic applications.

Picture:



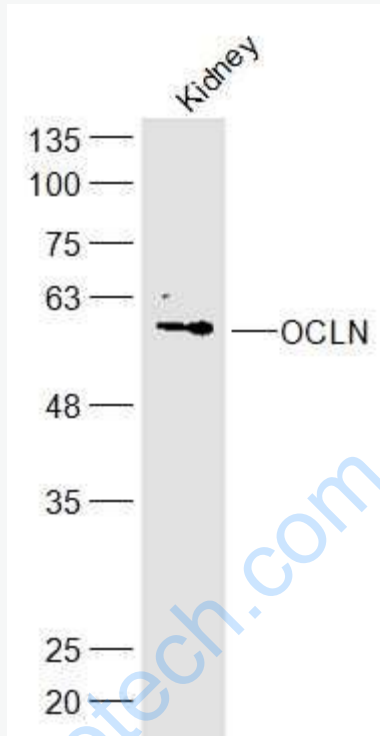
Sample: A549 Cell Lysate at 30 ug

Primary: Anti- OCLN (SL1495R) at 1/300 dilution

Secondary: IRDye800CW Goat Anti-Rabbit IgG at 1/20000 dilution

Predicted band size: 57 kD

Observed band size: 57 kD



Sample:

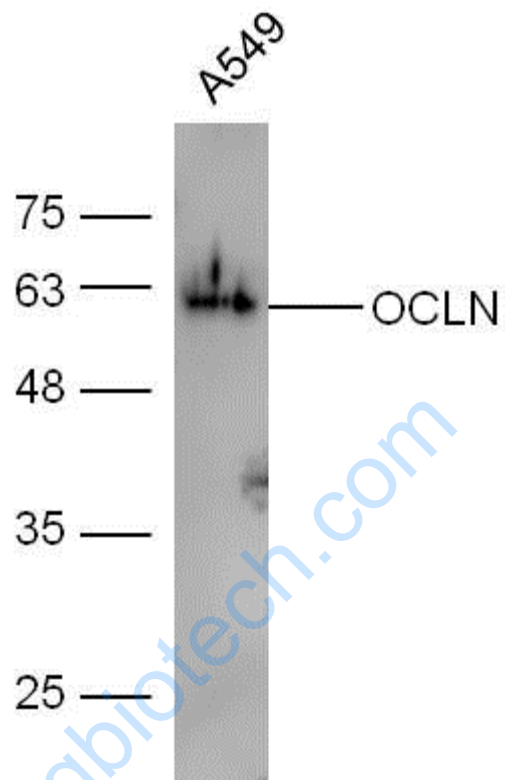
Kidney (Mouse) Lysate at 40 ug

Primary: Anti-OCLN (SL1495R) at 1/300 dilution

Secondary: IRDye800CW Goat Anti-Rabbit IgG at 1/20000 dilution

Predicted band size: 57 kD

Observed band size: 57 kD



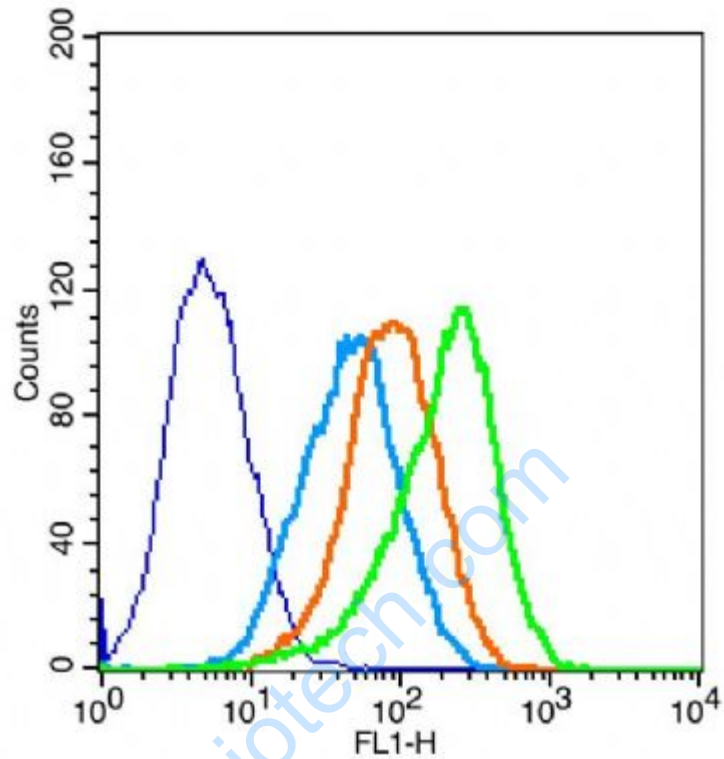
Sample: A549 Cell Lysate at 30 ug

Primary: Anti- OCLN (SL1495R) at 1/300 dilution

Secondary: IRDye800CW Goat Anti-Rabbit IgG at 1/20000 dilution

Predicted band size: 57 kD

Observed band size: 60 kD



The blue histogram is unstained cells (293FT cells).

The Wathet Blue histogram is cells stained with secondary antibody alone.

The Orange histogram is cells stained with rabbit IgG isotype control antibody plus secondary antibody.

The green histogram is cells stained with Rabbit Anti-OCLN antibody (SL1495R) plus secondary antibody (Concentration 1: 20).