



Rabbit Anti-C22orf43 antibody

SL15140R

Product Name:	C22orf43
Chinese Name:	22号染色体开放阅读框43抗体
Alias:	C22orf43; Chromosome 22 open reading frame 43; CV043_HUMAN; Putative uncharacterized protein C22orf43; Uncharacterized protein C22orf43.
Organism Species:	Rabbit
Clonality:	Polyclonal
React Species:	Human,Rat,
Applications:	WB=1:500-2000ELISA=1:500-1000IHC-P=1:400-800IHC-F=1:400-800ICC=1:100-500IF=1:100-500 (Paraffin sections need antigen repair) not yet tested in other applications. optimal dilutions/concentrations should be determined by the end user.
Molecular weight:	25kDa
Cellular localization:	The nucleuscytoplasmicExtracellular matrix
Form:	Lyophilized or Liquid
Concentration:	1mg/ml
immunogen:	KLH conjugated synthetic peptide derived from human C22orf43 :1-100/229
Lsotype:	IgG
Purification:	affinity purified by Protein A
Storage Buffer:	0.01M TBS(pH7.4) with 1% BSA, 0.03% Proclin300 and 50% Glycerol.
Storage:	Store at -20 °C for one year. Avoid repeated freeze/thaw cycles. The lyophilized antibody is stable at room temperature for at least one month and for greater than a year when kept at -20°C. When reconstituted in sterile pH 7.4 0.01M PBS or diluent of antibody the antibody is stable for at least two weeks at 2-4 °C.
PubMed:	PubMed
Product Detail:	C22orf43 (chromosome 22 open reading frame 43), also known as MGC33025 or MGC75009, is a 229 amino acid protein encoded by a gene located on human chromosome 22, which contains over 500 genes and about 49 million bases. As the second smallest human chromosome, chromosome 22 contains a wide variety of genes with numerous functions. Phelan-McDermid syndrome, Neurofibromatosis type 2 and autism are associated with chromosome 22. A schizophrenia susceptibility locus has

been identified on chromosome 22 and studies show that 22q11 deletion symptoms include a high incidence of schizophrenia. Translocations between chromosomes 9 and 22 may lead to the formation of the Philadelphia Chromosome and the subsequent production of the novel fusion protein, BCR-Abl, a potent cell proliferation activator found in several types of leukemia.

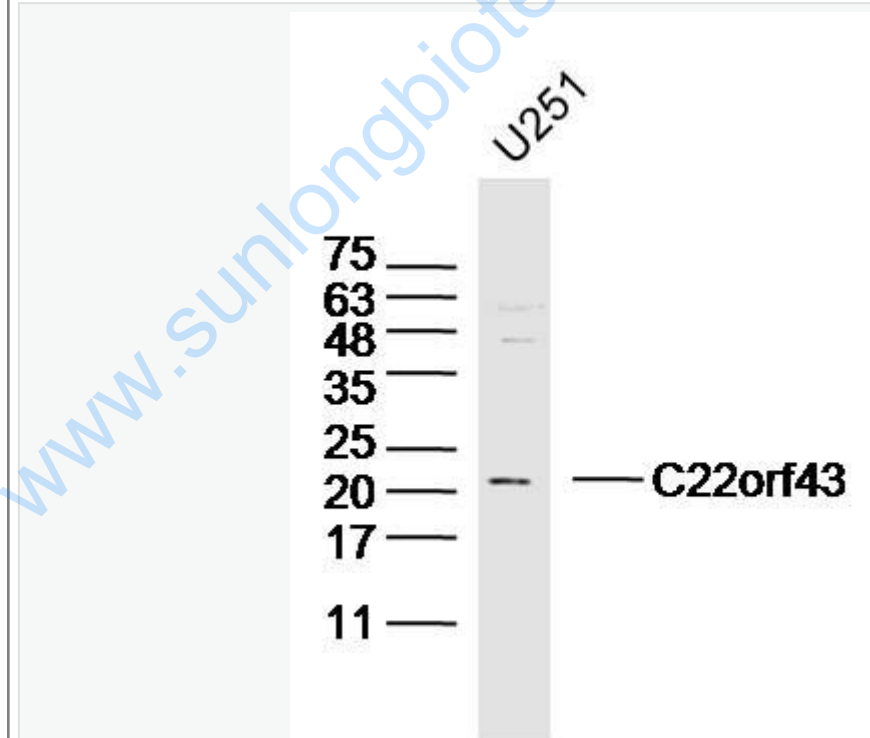
SWISS:
Q6PGQ1

Gene ID:
51233

Database links:
UniProtKB/Swiss-Prot: Q6PGQ1.1

Important Note:
This product as supplied is intended for research use only, not for use in human, therapeutic or diagnostic applications.

Picture:



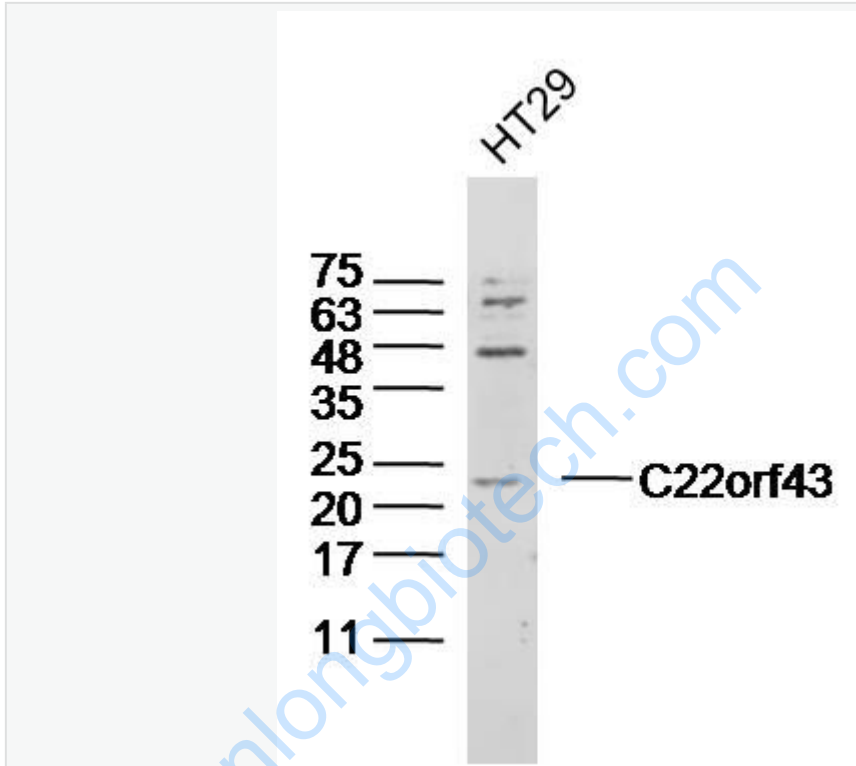
Sample:U251(human) Cell Lysate at 40 ug

Primary: Anti-C22orf43(SL15140R)at 1/300 dilution

Secondary: IRDye800CW Goat Anti-Rabbit IgG at 1/20000 dilution

Predicted band size: 25kD

Observed band size: 22kD



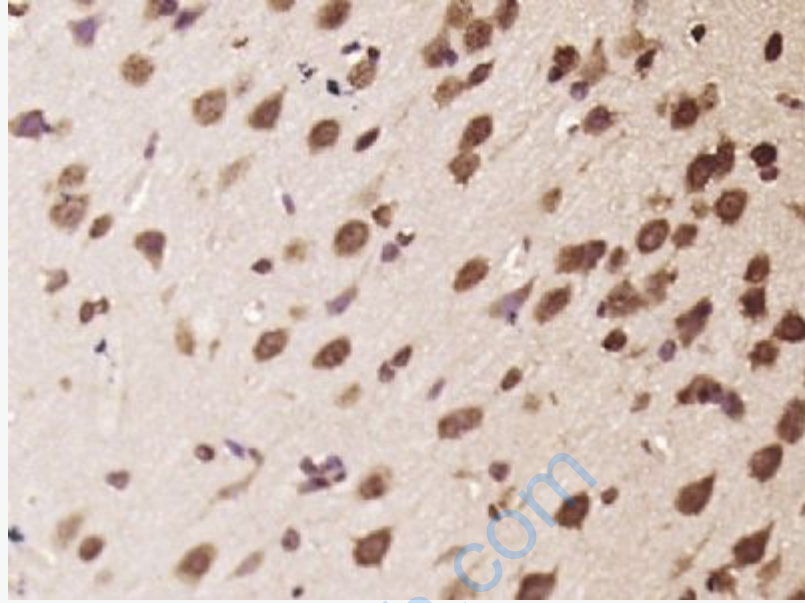
Sample: HT29(huaman) Cell Lysate at 40 ug

Primary: Anti-C22orf43(SL15140R) at 1/300 dilution

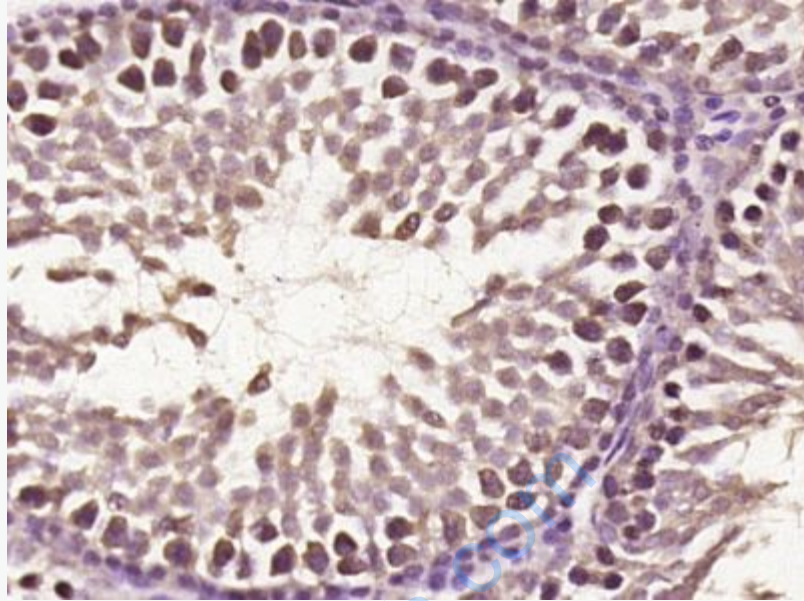
Secondary: IRDye800CW Goat Anti-Rabbit IgG at 1/20000 dilution

Predicted band size: 25kD

Observed band size: 23kD



Paraformaldehyde-fixed, paraffin embedded (rat brain tissue); Antigen retrieval by boiling in sodium citrate buffer (pH6.0) for 15min; Block endogenous peroxidase by 3% hydrogen peroxide for 20 minutes; Blocking buffer (normal goat serum) at 37°C for 30min; Antibody incubation with (C22orf43) Polyclonal Antibody, Unconjugated (SL15140R) at 1:400 overnight at 4°C, followed by operating according to SP Kit(Rabbit) (sp-0023) instructions and DAB staining.



Paraformaldehyde-fixed, paraffin embedded (rat testis tissue); Antigen retrieval by boiling in sodium citrate buffer (pH6.0) for 15min; Block endogenous peroxidase by 3% hydrogen peroxide for 20 minutes; Blocking buffer (normal goat serum) at 37°C for 30min; Antibody incubation with (C22orf43) Polyclonal Antibody, Unconjugated (SL15140R) at 1:400 overnight at 4°C, followed by operating according to SP Kit(Rabbit) (sp-0023) instructions and DAB staining.