

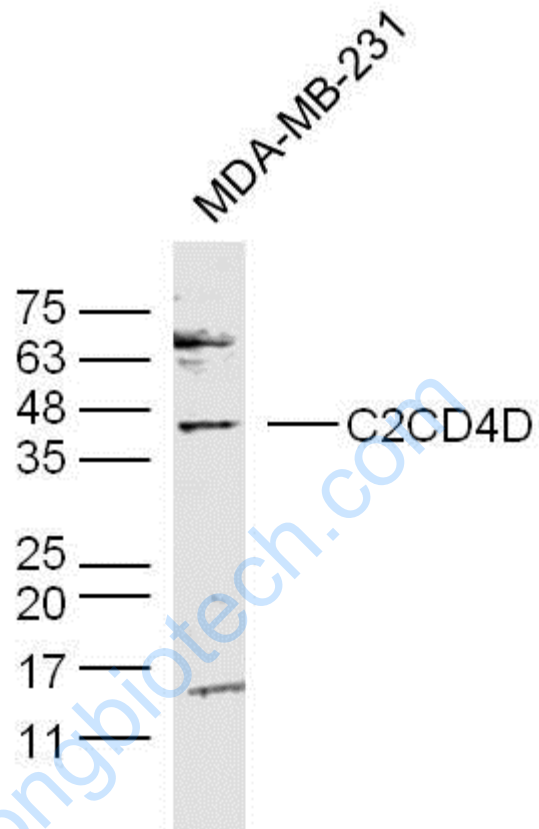


## Rabbit Anti-C2CD4D antibody

SL15144R

<b>Product Name:</b>	C2CD4D
<b>Chinese Name:</b>	C2CD4D蛋白抗体
<b>Alias:</b>	C2 calcium-dependent domain-containing protein 4D; C2cd4d; C2D4D_HUMAN; FAM148D.
<b>Organism Species:</b>	Rabbit
<b>Clonality:</b>	Polyclonal
<b>React Species:</b>	Human,Mouse,Rat,Pig,Cow,
<b>Applications:</b>	WB=1:500-2000ELISA=1:500-1000 not yet tested in other applications. optimal dilutions/concentrations should be determined by the end user.
<b>Molecular weight:</b>	38kDa
<b>Cellular localization:</b>	The nucleusThe cell membrane
<b>Form:</b>	Lyophilized or Liquid
<b>Concentration:</b>	1mg/ml
<b>immunogen:</b>	KLH conjugated synthetic peptide derived from human C2CD4D:101-200/353
<b>Lsotype:</b>	IgG
<b>Purification:</b>	affinity purified by Protein A
<b>Storage Buffer:</b>	0.01M TBS(pH7.4) with 1% BSA, 0.03% Proclin300 and 50% Glycerol.
<b>Storage:</b>	Store at -20 °C for one year. Avoid repeated freeze/thaw cycles. The lyophilized antibody is stable at room temperature for at least one month and for greater than a year when kept at -20°C. When reconstituted in sterile pH 7.4 0.01M PBS or diluent of antibody the antibody is stable for at least two weeks at 2-4 °C.
<b>PubMed:</b>	<a href="#">PubMed</a>
<b>Product Detail:</b>	

Picture:



Lane 1: (Human/cell line)MDA-MB-231 lysates probed with C2CD4D Polyclonal Antibody, Unconjugated (Catalog #bs-15144R) at 1:300 overnight at 4 x C. Followed by a conjugated secondary antibody (Secondary Catalog #926-32211) at 1:10000 for 60 min at 37 x C.