




Rabbit Anti-CD33 antibody

SL1514R

Product Name:	CD33
Chinese Name:	CD33抗体
Alias:	CD33_HUMAN; CD 33; CD33 antigen; CD33 molecule; FLJ00391; gp67 ; Myeloid cell surface antigen CD33; Myeloid cell surface antigen CD33 precursor; p67 ; Sialic acid binding Ig like lectin 3; Sialic acid binding immunoglobulin like lectin 3; SIGLEC3; Siglec-3; myeloid cell surface antigen CD33 isoform 1 precursor.
文献引用  :	<p>Specific References(2) SL1514R has been referenced in 2 publications.</p> <p>[IF=4.46]Shi, Kejian, et al. "Sodium selenite alters microtubule assembly and induces apoptosis in vitro and in vivo." Journal of hematology & oncology 6.1 (2013): 1-9.IHC-P;Mouse. PubMed:23327530</p> <p>[IF=4.24]Shan, Wulin, et al. "LukS-PV, a component of Panton-Valentine leukocidin, exerts potent activity against acute myeloid leukemia in vitro and in vivo." The International Journal of Biochemistry & Cell Biology (2015).IHC-P;Mouse. PubMed:25601295</p>
Organism Species:	Rabbit
Clonality:	Polyclonal
React Species:	Human,Mouse,Rat,
Applications:	WB=1:500-2000ELISA=1:500-1000IHC-P=1:400-800IHC-F=1:400-800Flow-Cyt=1µg/TestICC=1:100-500IF=1:100-500(Paraffin sections need antigen repair) not yet tested in other applications. optimal dilutions/concentrations should be determined by the end user.
Molecular weight:	40/37kDa
Cellular localization:	The cell membrane
Form:	Lyophilized or Liquid
Concentration:	1mg/ml

immunogen:	KLH conjugated synthetic peptide derived from mouse CD33:101-200/334<Extracellular>
Lsotype:	IgG
Purification:	affinity purified by Protein A
Storage Buffer:	0.01M TBS(pH7.4) with 1% BSA, 0.03% Proclin300 and 50% Glycerol.
Storage:	Store at -20 °C for one year. Avoid repeated freeze/thaw cycles. The lyophilized antibody is stable at room temperature for at least one month and for greater than a year when kept at -20°C. When reconstituted in sterile pH 7.4 0.01M PBS or diluent of antibody the antibody is stable for at least two weeks at 2-4 °C.
PubMed:	PubMed
Product Detail:	<p>CD33 is found on granulocyte and macrophage precursors in the bone marrow, but is not on pluripotent stem cells. The protein is also expressed on, and is a useful marker for, peripheral monocytes. It is also useful for distinguishing myelogenous leukaemia cells from lymphoid or erythroid leukaemias.</p> <p>Function: Putative adhesion molecule of myelomonocytic-derived cells that mediates sialic-acid dependent binding to cells. Preferentially binds to alpha-2,6-linked sialic acid. The sialic acid recognition site may be masked by cis interactions with sialic acids on the same cell surface. In the immune response, may act as an inhibitory receptor upon ligand induced tyrosine phosphorylation by recruiting cytoplasmic phosphatase(s) via their SH2 domain(s) that block signal transduction through dephosphorylation of signaling molecules. Induces apoptosis in acute myeloid leukemia (in vitro).</p> <p>Subunit: Interacts with PTPN6/SHP-1 and PTPN11/SHP-2 upon phosphorylation.</p> <p>Subcellular Location: Cell membrane; Single-pass type I membrane protein.</p> <p>Tissue Specificity: Monocytic/myeloid lineage cells.</p> <p>Post-translational modifications: Phosphorylation of Tyr-340 is involved in binding to PTPN6 and PTPN11. Phosphorylation of Tyr-358 is involved in binding to PTPN6.</p> <p>Similarity: Belongs to the immunoglobulin superfamily. SIGLEC (sialic acid binding Ig-like lectin) family. Contains 1 Ig-like C2-type (immunoglobulin-like) domain. Contains 1 Ig-like V-type (immunoglobulin-like) domain.</p> <p>SWISS: Q63994</p>

Gene ID:
12489

Database links:

[Entrez Gene: 945](#)Human

[Entrez Gene: 12489](#)Mouse

[Entrez Gene: 690492](#)Rat

[Omim: 159590](#)Human

[SwissProt: P20138](#)Human

[SwissProt: Q63994](#)Mouse

[Unigene: 83731](#)Human

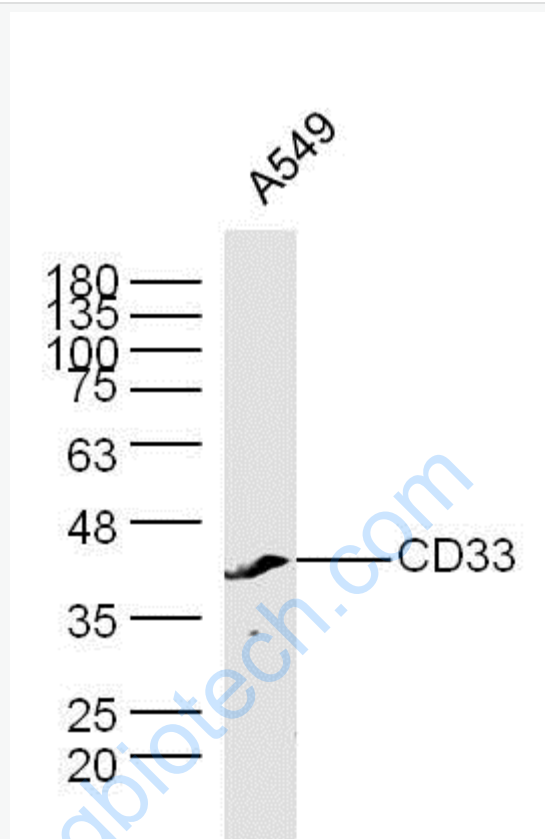
[Unigene: 140157](#)Mouse

Important Note:

This product as supplied is intended for research use only, not for use in human, therapeutic or diagnostic applications.

CD33(Siglec-3)也是急性lymphocyte白血病抗原,细胞表面跨膜glycoprotein.CD33表达于早期Blymphocyte,某些粒性白细胞,骨髓基质细胞,部分上皮组织及其起源的Tumour细胞中也有表达.主要应用于某些恶性淋巴瘤和白血病的分型.

Picture:



Sample:

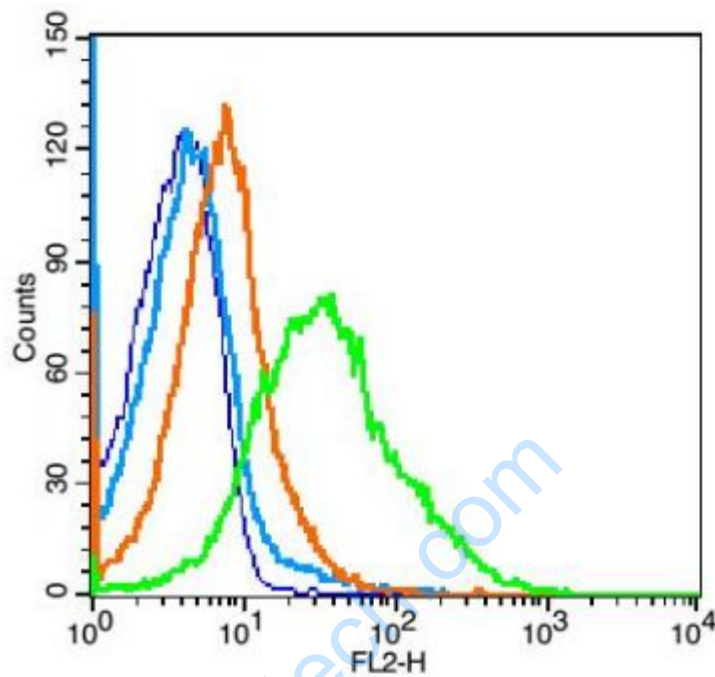
A549 Cell (Human) Lysate at 30 ug

Primary: Anti-CD33 (SL1514R) at 1/300 dilution

Secondary: IRDye800CW Goat Anti-Rabbit IgG at 1/20000 dilution

Predicted band size: 40/37 kD

Observed band size: 40 kD



Blank control: mouse spleen cells (blue).

Primary Antibody: Rabbit Anti- CD33 antibody(SL1514R), Dilution: 1 μ g in 100 μ L
1X PBS containing 0.5% BSA;

Isotype Control Antibody: Rabbit IgG(orange) ,used under the same conditions);

Secondary Antibody: Goat anti-rabbit IgG-PE(white blue), Dilution: 1:200 in 1 X
PBS containing 0.5% BSA.

Protocol

The cells were fixed with 2% paraformaldehyde (10 min). Primary antibody (SL1514R) were incubated for 30 min on the ice, followed by 1 X PBS containing 0.5% BSA + 1 0% goat serum (15 min) to block non-specific protein-protein interactions. Then the Goat Anti-rabbit IgG/PE antibody was added into the blocking buffer mentioned above to react with the primary antibody at 1/200 dilution for 30

	min on ice. Acquisition of 20,000 events was performed.
--	---

www.sunlongbiotech.com